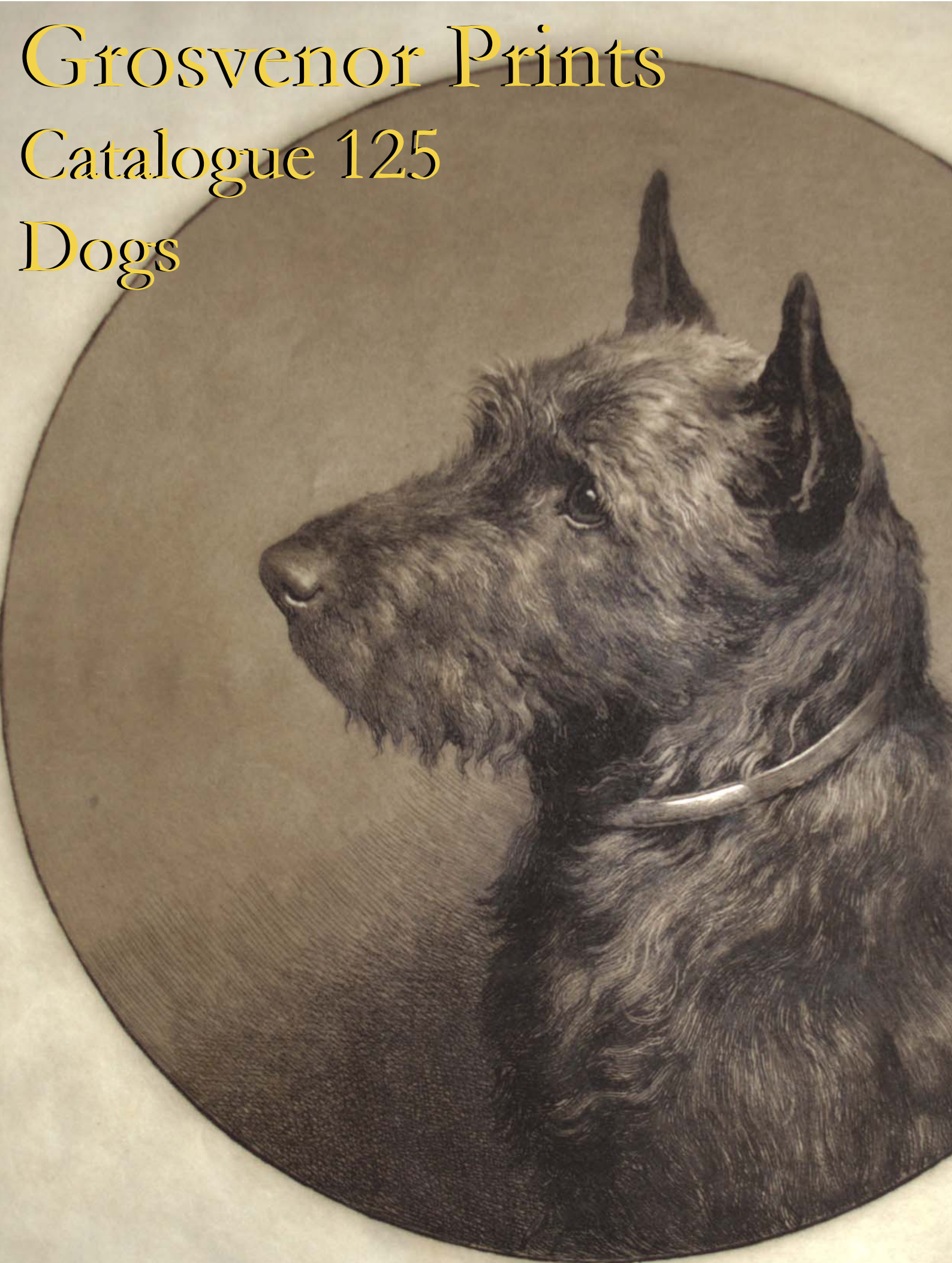


Grosvenor Prints

Catalogue 125

Dogs



Herbert Dicksee



Grosvenor Prints
19 Shelton Street
Covent Garden
London WC2H 9JN

Tel: 020 7836 1979
grosvenorprints@btinternet.com
www.grosvenorprints.com

Catalogue 125

DOGS



Item 271

Cover: Detail of Item 279

Back: Detail of Item 118

Items under £300 are subject to VAT where applicable

Registered in England No. 305630 Registered Office: 2, Castle Business Village, Station Road, Hampton,
Middlesex. TW12 2BX. Rainbrook Ltd. Directors: N.C. Talbot. T.D.M. Rainment. C.E. Ellis. E&OE
VAT No. 217 6907 49





1. **The Stag At Bay. To the Most Noble the Marquis of Breadalbane this Engraving from the Original Picture in his Lordship's Collection, Is with permission most respectfully dedicated by His Lordship's Obedient Servants, Henry Graves & Compy.**

Painted By Sir Edwin Landseer, R.A. Engraved By Thomas Landseer. London; Published by Paul Jerrard & Sons, Fine Art Gallery, 170, Fleet Street [n.d. c.1855].

Engraving. 985 x 605mm. Tear c.8cm into image top left. Water staining through title area and into image at right. Staining and foxing mostly in margins. £650
Re-issue from original plate by Jerrard of print originally published by Henry Graves, with Graves publication line erased. Painting was exhibited at the Art Treasures Exhibition of 1857. *Graves: 234. Provenance: Royal House of Hanover.*
Stock: 3709

2. **Le Chien du Chasseur.**

Edouard Odier pinx. Lith. de Lemercier. Marin Lavigne del. À Paris, chez Rittner et Goupil, b.rd Montmartre, N.o 12. London published 1832 by Ch. Tilt, 86 Fleet Street.

Lithograph on chine collé, sheet 415 x 480mm (16¼ x 18¾") with small margins. Goupil's blind stamp Tear on top edge slightly going into image, some creasing on edges and some foxing. £240

A scene set on a snow-covered mountain with a hunting dog protecting his dead owner lying on the ground from a vulture. *Liechtenstein Collection.*
Stock: 60111

3. **["Biddie and Beauty Queen".]**

[Cynthia Harnett and George Vernon Stokes.] [n.d., c.1944.]

Drawing. Sheet: 205 x 185mm (8 x 7¼"). On board with pencil annotations. £30

A scene showing a young girl chasing after a lead. An original illustration by illustrator and author Cynthia Harnett (1893-1981) and animal artist George Vernon Stokes (1873-1954) for Muriel Denison's 'Happy Tramp: the Story of a Little Girl and Her Old English Sheep Dog', 1944. After her father is wounded as a soldier in World War II and her mother is killed by in a German air raid Biddie and her Old English Sheepdog are evacuated to America where her father has found work as a kennel man for a wealthy New York dog breeder.

Stock: 47833

4. **Boy & Dog. In the Collection of his Grace the Duke of Norfolk.**

B. Murillo Pinxit. Caroline Watson Sculpsit. Publish'd Sep.r 1st 1781 by John Boydell Engraver in Cheapside London.

Stipple with very large margins. 230 x 180mm (9 x 7"). Uncut. £130

An oval portrait of a boy feeding his dog, after Spanish painter Bartolomé Esteban Murillo (1617-82). The engraver, Caroline Watson (1760-1814), was the daughter of James Watson: she was one of the few female print engravers and publishers of the period.

Ex: Collection of The Hon. C. Lennox-Boyd.

Stock: 36468

5. **[Child with biscuit & two King Charles Spaniels.]**

Haywood Hardy 1887.

Mixed method engraving, printed in colours and hand finished. 350 x 460mm. 13¾ x 18". £680

Stock: 8539

6. **Le Chien du Prisonnier.**

J.Stevens pinx. V.Loutrel lith. Bruxelles, J.Géruzet, Editeur.

Lithograph, printed area 580 x 510mm. Publisher's blindstamp in title area. £260

Stock: 5719

7. **M.r Grenier-à-Puce, M.d de Chiens.**

APM. 1817. Chez Martinet. Lithographie Pl. des Marais F. S.t Germain N.o 13.

Coloured lithograph, sheet 330 x 205mm (13 x 8"). Foxed and creased. £60

A dog merchant surrounded by his animals.

Stock: 60149

8. **[Infant in highchair at table with dogs and a cat.]**

[Anon; unsigned.] London, Published October 12th 1891 by Louis Brall & Sons, 38, Hart Street, Bloomsbury, W.C.

Mezzotint on india paper, proof before title, 685 x 535mm. 27 x 21". A crisp impression with full, somewhat soiled and spotted outer margins. £380

Eating from the child's plate which has dropped to the floor (and cracked) is a pug, Scottish terrier, fox terrier and another dog; also a tabby-cat.

Stock: 23444

9. **["All the children brought dogs".]**

C.M.H. V.S. [n.d., c.1944.]

Drawing. Sheet: 130 x 180mm (5 x 7"). On board with pencil annotations. £140

A scene in which several children and their dogs sit on a bench.

An original illustration by illustrator and author Cynthia Harnett (1893-1981) and animal artist George Vernon Stokes (1873-1954), probably for Muriel Denison's 'Happy Tramp: the Story of a Little Girl and Her Old English Sheep Dog', 1944. After her father is wounded as a soldier in World War II and her mother is killed by in a German air raid Biddie and her Old

English Sheepdog are evacuated to America where her father has found work as a kennel man for a wealthy New York dog breeder.
Stock: 47831



10. **[Battersea Dog's Home.]**

R.B. Parkes [pencil signature] [after Allen Culpepper Sealy]. [London Published October 1st, 1885 by Thomas Mc.,Lean, 7 Haymarket.]

Rare mixed-method engraving, proof before publisher's address, on chine collé, signed by the engraver, 400 x 470mm (15½ x 18½") with large margins. A little surface abrasion to the backing paper. £380

A young girl kneels to hug a long-haired St Bernard dog in the corridor of BATERSEA Dogs Home.

This was published the year that Queen Victoria became the first royal patron of the home, a tradition that has continued. *BM 2010,7081.5973; "acquired for reference purposes only. Its condition is so poor that it cannot be displayed".*

Stock: 56679

11. **[Edward VII?] Fidelity.**

[Drawn from nature &] engraved by Newton.

[Published Edinburg, by Swinton, Princes Street. Paris, chez A. Fonrouge, Place du Louvre, 10.] [n.d., c.1850.] Mezzotint. 390 x 295mm (15¼ x 11½"). Some spotting, publication inscriptions indistinct. £260

A boy dressed in tartan with his dog. At his side hangs a sgian dubh, the traditional Scottish pairing of a hunting and skinning knife in a sheath. As Holyrood Palace can be seen in the background it is likely that this is Bertie, Prince of Wales, later Edward VII.

Stock: 13971

12. **[Girl and Poodle.]**

François Flameng.

Etching, 350 x 250mm. 13¾ x 9¾". Stamp of Société des Amis de l'Eau-Forte, Paris in bottom left; signed in pencil by the artist. £120

A girl with a poodle. Remarque Proof. *Lugt: 113.*

Stock: 9108

13. **[Girl with a Mastiff.]**

19. Heywood Hardy [pencil signature] [n.d. c.1900]

Etching. 202 x 254mm. 8" x 10". £260

Heywood Hardy [British Painter, 1843-1933].

Stock: 8687

14. **'A Mute Appeal'.**

C. Burton Barber 1882 [in plate]. Painted by C.Burton Barber. Photogravure Goupil & Co. Printed in Paris. Published December 1st 1884 E.E. Leggatt 62 Cheapside London Copyright registered New-York M. Knoedler & Co.

Photogravure. 650 x 520mm.

£360

A small girl with her pug puts money into a basket around the neck of a plaintive beggar's dog.

This is from one of numerous child and dog paintings executed by Charles Burton Barber (1845-1894) towards the end of his life. He attained great success with his paintings of children with their pets; during his life he received commissions from Queen Victoria, and a number of his portraits are in the Royal Collection.

Stock: 512

15. **My Dogs.**

W.M. Craig del. J. Godby sculp. Published June 4th. 1806. by Edw.d Orme, London.

Stipple. 240 x 185mm .

£260

A Newfoundland and three puppies.

Stock: 2742



16. **[On Guard.]**

[Painted by R. Ansdell. Engraver by Wm.H. Simmons.] London Published by Ths.Agnew & Sons, Old Bond Street Galleries. W. and H.Blain Ansdell, Savile Row Gallery. W. May 2nd. 1881. Copyright Registered, Entered according to Act of Congress in the Year 1881 by Mr Knoedler & Co in the Office of the Librarian at Washington.

A scarce mixed method engraving on india laid paper. Plate 761 x 585mm. 30 x 23".. Printsellers stamp.

Proof, before all letters, uncut sheet. Limited edition of 250. £480

A Mastiff watches over a small child in a pram. *PSA*
Stock: 18766

17. **[Boy, pug and broken cup.]**

Published by M. Knødler & Co., 170 Fifth Avenue, New York. Entered according to act of congress in the year 1880 by M.Knødler & Co., in the office of the Librarian of congress at Washington.

Mezzotint on india paper. 680 x 530mm (26¾ x 20¾"). Laid on board. £450

A young child hugs a pug, the handle of a broken tea cup hooked over his thumb. *Ex: Collection of the Hon. Christopher Lennox-Boyd.*
Stock: 47329

18. **[Virginie de Sainte-Aldegonde.] Le Premier Ami. The First Friend.**

Peint par F. Winterhalter. Gravé par Alph.se Martinet. London _ Published Feb.y 1844, by the Anaglyphic Company, 25 Berniers St, Oxf.d St. Paris _ Publié par Goupil & Vibert., Boulevard Montmartre 15, & rue de Lanery 7.

Rare photogravure. 440 x 490mm (17¼ x 19¼"), with large margins. Surface soiling, manuscript within plate mark, outside image area. £360

A portrait of the five-year old Virginie de Sainte-Aldegonde (1834-1900, the future Duchesse de Rochechouart-Mortemart) in a garden overlooking the sea, leaning on a huge hound, probably a Neapolitan mastiff. *The original painting is Winterhalter Catalogue, no 162.*

Stock: 47432

19. **Puzzled & Pleased.**

Painted by B. A. Howe Esqre. Drawn on Stone by Worsley Combe Robinson. William Tegg & Co 85 Queen Street, Cheapside, London. J. Straker, lith. 80 Bishopsgate Street London. [c.1855.]

Hand coloured lithograph. Image 350 x 450mm (13¾ x 17¾"). £320

Four terriers excitedly investigate a hedgehog, watched by two boys.

After B. A. Howe (English, fl.1844 -1857).

Stock: 13409



20. **Trust. From the original picture in the Collection of Charles Churchill Esq.re of Weybridge Park, to whom this Engraving is respectfully dedicated by The Publisher.**

Painted by C. Burton Barber. Engraved by F. Stacpoole, A.R.A. London, Published by Thomas Mc.Lean, Publisher to Her Majesty, April 16th 1889, 7, Haymarket, S.W.

Mixed method engraving, open-letter state. 700 x 540mm (27¾ x 21¼"). £380

A small girl balances a sugar cube on the nose of a dog much larger than her. The girl was one of the nine children of Charles Churchill (1823-1905) a City timber broker who bought Weybridge Park in 1863. Another of his children was the subject of Barber's 'In Disgrace'.

This is from one of numerous child and dog paintings executed by Charles Burton Barber (1845-1894) towards the end of his life. He attained great success with his paintings of children with their pets; during his life he received commissions from Queen Victoria, and a number of his portraits are in the Royal Collection.
Stock: 47805

21. **[Well Bred Sitters that never say they are bored]**

[After Landseer] [W. H. Simmons pencil signature] [n.d., c.1850.]

Mixed-method, proof on chine collé. 850 x 650mm (33½ x 25½"), with large margins. Crease in image.

£620

Three dogs, including a poodle, before an array of dead fowl. One dog holds a brush in its mouth, suggesting the dogs belong to the artist. *See Landseer Tate Gallery pg 200*

Stock: 56264

22. **[Inseparable.]**

Cecil Aldin [signed in pencil.] [n.d. c.1925.]

Etching, with pencil signature; numbered edition 62/100. Sheet 285 x 420mm. 11¼ x 16½".

£990

An alsatian and young keeshond puppy.

Stock: 24301



23. **[32 original pencil sketches by Winifred Austen, drawn for] A Book of Dogs Being a Discourse on them, with Many Tales and Wonders Gathered by E. Nesbit, and Original Pencil Drawing by Winifred Austen.**

London: J.M. Dent & Co., 1898.

Oblong 8vo (170 x 240mm, 6¾ x 9½"), illustrated cloth; pp. (iv)+60, photogravure frontispiece, offset-lithographic text illustrations throughout. WITH 32 original pencil sketches on 27 cards, largest 240 x 300mm (9½ x 11¾"). WITH ink a.l.s. signed by Austen. Three images have foxing. £5000

A collection of pencil sketches by Winifred Austen (1876– 1964) drawn to illustrate 'A Book of Dogs', including one not used.

The signed letter, dated 23rd February 1904, was to accompany 28 cards sent by Austen to William H. Ward, who had engraved and printed the book six years earlier, with a typed list on the second page. Of the 28, one ('Tatters') is marked in pencil 'To Helen

Hofer' and is not present here. Ward initialed the letter as confirmation of receipt two days later.

Among the breeds illustrated are a bulldog, pug, Irish terrier, dingo, Schipperke and dingo.

Winifred Austen (1876-1964) was a painter and engraver known for her pictures of animals and birds, publishing individual plates and illustrating several books.

Stock: 60126

24. **[A Boycotted Puppy]**

Painted by Frank Paton [pencil signature], engraved by W. Redaway Published by E.E. Leggatt, December 10th 1881

Etching, artists proof, signed by the artist, limited to 150. Remarque. 330 x 290mm £380

A puppy being stared down by a frog.

Stock: 4564

25. **[Come Over Here!]**

Lilian Cheviot. Copyright, Published April 17, 1915, by Arthur Ackermann & Son Ltd, 157a New Bond St, London W.

Photogravure, artist's proof, signed in pencil, printed in colour. 450 x 520mm (17¾ x 20½") with very large margins. Fine Art Trade Guild blindstamp. Worm holes filled. £480

A bulldog, an Irish Terrier & a Scottish Terrier guard the south coast of England. First World War interest. Lilian Cheviot (fl. 1894 - 1920), who lived in South Molesey in Surrey, exhibited at the Royal Academy in 1895 and 1899. She is best known for her painting 'On the way to the Horse Fair'.

Stock: 52137

26. **'Cave Canem!' (Beware of the Dog.) Engraved from, and the same size as, the original Picture in the possession of Henry James Turner Esq. of Stockleigh House, Regents Park.**

Painted By Briton Riviere, R.A. Engraved by J.J. Chant. London Published May 3rd. 1881, By Arthur Lucas, The Proprietor, 37, Duke Street, Piccadilly, S.W.

Mezzotint and etching, final published state on india laid paper, 605 x 455mm. 23¾ x 17¾". Some spotting; traces of mold in image. Margins trimmed. £360

A puppy stands guard at a doorway. After Briton Riviere (1840-1920). *Printseller's Association: pg.49.* Stock: 8849

27. **Charity. "Charity suffereth long, and is kind." 1 Cor. IV Chap: 5 V. Engraved from the original Picture in the possession of Lieu.t Col.I Loyd Lindsay V.C. _ M.P. To whom this plate is respectfully dedicated by the publisher.**

Painted by Briton Riviere. Engraved by F. Stacpoole. London: Published Jan.y 1st 1872, by Arthur Lucas, the Proprietor, 49, Wigmore St. Cavandish Sq.re W. Entered according to Act of Congress in the year 1872, by W.m Schaus in the Office of the Librarian of Congress at Washington.

Mixed method engraving. 565 x 705mm (22¼ x 27¾"), with very large margins. £280

A little girl in ragged clothes sitting barefoot in the snow, feeding two stray dogs from a small piece of bread. After Briton Riviere (1840-1920).

Stock: 47812

28. **[Les Sept Péchés Capitaux.]**

[Godefroy Jadin Pinx. Emile Lassalle Lith.]

[Paris _Lalanne et C.ie Editeurs, rue Neuve Bréda, 16.]

A scarce lithograph with fine original hand-colour.

Sheet: 330 x 665mm (13 x 26¼"). Trimmed to image. £420

Portraits of seven dogs representing the Seven Deadly Sins. On the far left a dog jealously guards his bone, below him a spaniel lies lazily on the ground, to the right a large white dog, with his tongue out, representing lust, places his paw on a central dog. The central figure which represents pride sits with an embossed red coat on, to her left an angry dog bears its teeth. Greed is represented by a dog gorging on a large piece of meat watch enviously by a dog on the extreme right.

Stock: 46658



29. **Les Sept Péchés Capitaux.**

Godefroy Jadin Pinx. Emile Lassalle Lith.

Paris _Lalanne et C.ie Editeurs, rue Neuve Bréda, 16.

A scarce lithograph. Sheet: 530 x 760mm (21 x 30").

Bit dusty in title. £420

Portraits of seven dogs representing the Seven Deadly Sins. On the far left a dog jealously guards his bone, below him a spaniel lies lazily on the ground, to the right a large white dog, with his tongue out, representing lust, places his paw on a central dog. The central figure which represents pride sits with an embossed red coat on, to her left an angry dog bears its teeth. Greed is represented by a dog gorging on a large piece of meat watch enviously by a dog on the extreme right. The dogs are labelled: 'Avarita', 'Picarita', 'Libido', 'Superbia', 'Ira', 'Cula' and 'Invida'.

Stock: 46657

30. **[The Dismemberment of a Turkey.]**

Painted by Frank Paton, engraved by W. Redaway signed in pencil by both. London Published April 2nd 1883 by E.E. Leggatt, 46 Fenchurch Street EC.

Etching, artists proof, limited to 75. Remarque "Turkey chasing away puppies". 330 x 330mm. £380

Frank Paton (1856-1909) Stock: 4567

31. **Les Tondeuses de Chiens.**

Designed & drawn on Stone by J.J. Chalon. London. Published by Rodwell & Martin New Bond St. May 1, 1820. C. Hullmandel's Lithography. Hand-coloured lithograph, watermark 1817, sheet 315 x 445mm (12½ x 17½") with very large margins. Slight mount burn around image, slightly stained on edge of margins. £140

A scene with two women sitting in a street and grooming dogs on their laps, under a parasol and by a sign for their business. Two groomed dogs are visible in the right foreground, further two in a kennel on the left, with pedestrians and a carriage in the background. Stock: 60112

32. **[Two dogs, one sleeping, the other awake.]**

Jo Eli Ridinger fec: et excud A.d. [1728] Etching, platemark 190 x 240mm (7½ x 9½"), with large margins. £190 Plate from the 'Zeichenbücher, Säugethiere betreffend' (Sketch books of mammals) produced and published by Johann Elias Ridinger (1698-1767), one of the most celebrated German engravers of animals. Much of his career was spent in Augsburg. Stock: 47791

33. **Graphic Illustrations Of Animals. Shewing Their Utility To Man, In Their Services During Life And Uses After Death. The Dog.**

Designed and Drawn on Stone by W Hawkins. London, Published by Thomas Varty, Adelaide Street, Strand. [n.d., c.1850.] Hand coloured lithograph. Sheet 345 x 420mm (13½ x 16½"). £260

A central illustration of a collie dog is surrounded by eight vignette scenes depicting the commercial uses and relationship to man of the animal, in life and death (in this case dog-skin boots!).

Plate to 'Graphic Illustrations Of Animals', illustrated by Benjamin Waterhouse Hawkins (1807 - ?1889), artist and sculptor of natural history subjects. In 1852 he was appointed director of the fossil department at the Crystal Palace, where he worked with Richard Owen on the famous models of dinosaurs and other extinct lifeforms.

Numbered 'Pl. 7.' upper right. Stock: 48193

34. **Portraits of Dogs. From the Original Picture In the Collection of Briggs Price Fountain, Esq.e at Narford in the County of Norfolk.**

Jean Fyt Pinxit. Daniel Lerperniere Sculpsit. Publish'd Sep.r 25.th 1799 by John & Josiah Boydell, No.90 Cheapside London.

Engraving with fine hand-colour. Framed. Plate: 510 x 600mm (20 x 23¾"). Frame 755 x 850mm (29¾ x 33½"). Unexamined out of frame. £990



A portrait of ten dogs in a landscape: in the foreground are several spaniels, a greyhound and a pair of bloodhounds. In a fine decorative frame. Stock: 47108

35. **[Dalmation Dogs and kennels.]**

[Etched by Paul Renouard.] [n.d., 1907.] Etching. 280 x 225mm, 11 x 8¾". £150 Charles Paul Renouard (1845-1924). While at the Ecole des Beaux-Arts in 1875 he and his instructor were hired to decorate the ceiling of the Paris opera house, which was the inspiration for his most well-known series of etchings, Le Nouvel Opéra. He came to London in the 1890s and started work for the 'Graphic' newspaper, sketching theater-goers and performers at the Theater Royal in Drury Lane, and policemen and defendants at one of London's many police courts. Stock: 9058

36. **Democ-Soc. Aristo.**

Peint par Alfred De Dreux. Imp. Lemerrier, 57 Rue de Seine, a Paris. ['Emile Lassalle' signature facsimile in plate lower left.] Paris et New York Goupil Vibert et C.ie Editeurs. Entered according to Act of Congress, in the year 1850, by W. Schaus, in the Clerk's Office of the District Court of the United States for the Southern District of New York. London. E. Gambert & Co. Publishers. [Publisher's blindstamp below publication line].

Tinted lithograph. Printed area: 510 x 680mm (20 x 26¾"). Light foxing to lower half of sheet. Pin hold in left edge of printed area. £450

A large tinted lithograph depicting a Boston Terrier (left) and a Whippet (right) looking at each other, wearing large thick collars. The Boston Terrier is named 'Democ-Soc', representing a Democratic Society, whilst the Whippet is named 'Aristo', a reference to the Aristocracy.

Stock: 32009

37. **Dogs Fighting. To the R.t Hon.ble Lord Charles Townshend, this Print is with permission dedicated by his lordship's most ob.t & hum.ble S.t. A. Cooper.**

Painted by A. Cooper. Engraved by C. Turner. Printed by J.Lahee. London, Published June 1, 1816, by A. Cooper No.10 Robert Street, Bedford Row. printed by J. lahee.

Mezzotint.. 380 x 410mm. Image of a stag on publication line. Margins slightly damaged. Light foxing to publication line. £420

Two terriers fighting over a bone. *Ex: Collection of The Hon. C. Lennox-Boyd.*

Stock: 1366

38. **[Dogs Fighting.]**

Painted by A. Cooper. Engraved by C. Turner. London, Published June 1, 1816, by A. Cooper No.10 Robert Street, Bedford Row. Printed by J. Lahee.

Mezzotint, before title, image 270 x 320mm. 10½ x 12½". Trimmed to/close to plate. £230

Two terriers fighting over a bone.

After Abraham Cooper (1787 - 1868). *Siltzer: p.95.*

Whitman: 701.

Stock: 18845

39. **Favorite Pony and Spaniels.**

Painted by E.Landseer, R.A. Engraved by Wm. Giller. [London, c.1841.]

Mezzotint. 350 x 430mm. £240

The property of Charles William Pack: a pony called Belle, a black & tan spaniel called Corah, and a Blenheim Spaniel called Fairy.

Landseer retouched the painting some years later, remarking that the horse 'needed grooming'.

Stock: 12297



40. **La Courmandise. Braque Francais et Griffon. The Gluttony - La Glotonía.**

Lith par J. Didier d'après le tableau original de Zacharie Noterman. Paris, Desgodets et C.ie 20 Rue Hautefeuille. London V.or Delarue. Imp. Lemercier, rue de Seine 57 Paris. [n.d. c.1860.]

Coloured lithograph. 596 x 786mm. 23½ x 31".

Repaired tears. £480

A Braque Francais and a Griffon digging into a basket of dead fowl, including pheasant.

Stock: 25912

41. **Macédoines No.11. Greyhound & Spaniel.**

E.d. Traviés. Paris Berrieux .r. rue des Grnads Augustins 1g. London Gambart et c. 25 Berners St, Oxford St. [n.d., c.1840].

Coloured lithograph, printed area 220 x 270mm. £160

An oval image is within a very ornate lithographed border the greyhound and Spaniel rest on a terrace.

Stock: 6177

42. **Jack In Office. From a Picture in the possession of John Sheepshanks Esq.r. Proof.**

Painted by Edwin Landseer, R.A. Engraved by Benj.n P. Gibbon. Printed by McQueen. London, Published Dec.r. 29, 1834, by Colnaghi & Co. Pall Mall East; F.G. Moon, 20 Threadneedle Street; Wyatt and Son, Oxford; and the Engraver, 89 Albany Sreet.

Proof etching on india paper. 510 x 435mm, very large margins. Tear in platemark at top. Foxing on left.£260

A fat Jack Russell terrier sits on a cart in a yard with two food bowls beside him, dominating four other dogs on the ground who look up at him hopefully. 'A Jack in Office' was a slang expression for a pompous government official. *Graves: 191.*

Stock: 52081

43. **The First Lesson.**

[James Bateman. Alfred Lucas.] London, Published September 1.st 1863 by B. Brooks & Sons, 48 Fetter Lane, City.

Mezzotint with etching. Platemark: 485 x 605mm (19 x 23¾"). Large margins. £230

A terrier in a barn, on the left, with a rat under its paw, looking at three puppies which watch eagerly; a kennel and broom behind.

After James Bateman (1814 - 1849). *Ex collection of Hon. Christopher Lennox-Boyd.*

Stock: 39071

44. **Morning.**

Frederick Taylor lithotint. C. Hullmandel's Patent. [n.d., c.1845.]

Lithotint. Sheet: 365 x 540mm (14½ x 21¼"), with very large margins. Slight foxing . £230

A scene showing a pack of setters excited to be let out in the morning.

Stock: 47453

45. **Morning. [&] Evening.**

Frederick Taylor lithotint. C. Hullmandel's Patent. [n.d., c.1845.]

Pair of lithotints. Sheet: 365 x 540mm (14½ x 21¼"), with very large margins. Foxing in margins. £380

Scenes comparing dogs behaviour in the morning and at night; a pack of setters excited to be let out; a kennel scene where a pack of tired setters & pointers all lie on the floor exhausted after a days work.

Stock: 53720

46. **Naughty Dogs of Paris...**

[Boris O' Klein] Printed by Ducher & Mathieu, 35 Avenue De L'Opera, Paris.

Coloured engraving. 435mm. n.d. c.1925. £140

'Naughty Dogs of Paris' Series. Proof. Arthur 'Boris' O'Klein, born in Moscow [1893-1983.]
Stock: 4461

47. **[A puppy asleep inside a gambler's hat.]**
[by Henry Macbeth Raeburn.] London Published 1st January 1887 by W. Wollrauch & Co. 24 Great Alie Street, Aldgate.
Etching before Artist proof stamp. 330 x 380mm (13 x 15") very large margins. £260
On the table are scattered playing cards, one of which has been chewed by the dog; also a cigar stub and a box marked 'Colorado'.
Stock: 53134

48. **[The Queen's Dogs.]**
Gourlay Steell. 1867. Published by T. & R. Annan, Glasgow 10th September 1885.
Coloured photogravure on chine collé, signed by the artist. 480 x 445mm (19 x 17½"). Some slight soiling. Small margins. £350
Three of Queen Victoria's dogs: Noble, a Cheviot-breed collie, lying on a divan; Waldman, a dachshund; and Corran, a Skye terrier.
After Gourlay Steell (1819-94), animal painter dubbed the 'Scottish Landseer' who received many aristocratic commissions for his work. In 1872 he succeeded Edwin Landseer as Queen Victoria's Animal Painter. This portrait was probably painted at Balmoral.
Stock: 47811

49. **Het Rekest.**
B. te Gempt del. Joh.s de Mare sculps. [n.d., c.1860.]
Mezzotint. Sheet 295 x 425mm. Trimemd to image on three sides. £220
A dog's court scene! 'The Petition'.
Stock: 8358

50. **[His First Night From Home.]**
HD. Herbert Dicksee [pencil signature]. Pub. London Nov. 1901 by the Fine Art Society Ltd. 148, New Bond St. W.
Etching on vellum, signed by the artist. 205 x 290mm (8 x 11½). Frame with Frost and Reed label. Small scratch in image. Unexamined out of frame. £750
A tiny puppy curled up asleep.
Stock: 50057

51. **Liberté - Égalité - Fraternité. Société des Partageux. Society for the Equal Division of Property.**
Godfroy Jadin pinx.t. Émile Lassalle Lith. London Publ.d 1st of April 1852 by Goupil & Co.
Tinted lithograph. Printed area 550 x 370mm (21½ x 14½"), blind stamp of Goupil Paris. £350
Three dogs around a bowl. The muzzled bulldog pushes to the front of the queue.
Louis Godefroy Jadin (1805-82), painted hunting scenes in both Napoleon III's rooms in the Louvre and the dining room of the Palace of Tuileries for Ferdinand-Philippe, Duke of Orleans.
Stock: 3424

52. **Société des Frères et Amis. Society of Friends and Brothers. [&] Société des Partageux. Society for the Equal Division of Property.**
Godfroy Jadin pinx.t. Émile Lassalle Lith. London Publ.d 1st of April 1852 by Goupil & Co.
Pair of tinted lithographs. Printed area 550 x 370mm. £850
A surtitle on both plates reads 'Liberté - Égalité - Fraternité'.
Louis Godefroy Jadin (1805-82) painted hunting scenes in both Napoleon III's rooms in the Louvre and the dining room of the Palace of Tuileries for Ferdinand-Philippe, Duke of Orleans.
Stock: 3425



53. **The Sportsman's Kennel, A Series of Heads of the principal British Sporting Dogs; Fox Hound. Terrier. Blood Hound. Spaniel. Pointer. Setter. Greyhound. Water Spaniel. Harrier. Beagle. Deer Hound. Newfoundland.**
Executed in Lithography by Thos. Fairland, After Pictures Painted From The Life, And Expressly For This Work by Edwin Landseer, R.A. A. Cooper, R.A. And Charles Hancock. London. Published by B.B. King, Monument Yard. Sold Also By Ackermann & Co. Strand, Charles Tilt, Fleet St. & Thos. Mc.Lean Haymarket. Printed by Graf & Soret. [1833.]
Extremely rare. Twelve lithographic plates and frontispiece on india laid paper in original green morocco boards, folio (500 x 350mm, 19¾ x 13¾"). Complete as issued. Boards stamped in gilt on cover: 'The Sportman's Kennel. By Edwin Landseer, R.A. Abraham Cooper, R.A. & Charles Hancock'. Boards scuffed and rubbed; missing spine. Soiling and some spotting to plates, water stain to lower edge of all sheets. Images largely unaffected, good. £1250
A fine set of lithographs of the principal sporting dog breeds. All plates captioned below image and inscribed 'London, Published by Harding & King, 24, Cornhill Novr. 1st. 1833.'
Stock: 8533

54. **The Twa Dogs. To His Grace the Duke of Bedford this Engraving is by permission most respectfully dedicated by His Graces obliged Servant. Edwin Landseer.**

Painted by Edwin Landseer 1822. Engraved by Benjamin P. Gibbon 1827. London, Published by W.B. Tiffin, N°3 Haymarket & Colnaghi Son & Co No 11 Pall Mall East.

Etching on chine collé. 390 x 435mm (15¼ x 17") very large margins. £240

Two dogs seated on a grassy knoll above a lake, with four lines of verse by Robert Burns.

Stock: 52080

55. **The Three Graces.**

Painted by W. Weekes. Published by Richard C. Hall & Co. 72 Dean Street, London. W. Copyright Registered. Entered According to Act of Congress, 1898 by Richard C. Hall & Co. in the Office of the Library of Congress.

Photogravure. 460 x 365mm. £280

A Pug, Fox Terrier, and Spaniel.

Stock: 6497



56. **Qui Vive! Who Goes There!.**

Emile Lassalle d'après Alfred De Dreux. Imp. par Lemercier, a Paris. ['Emile Lassalle' signature facsimile in plate lower left.] New-York, Pubd. by Goupil & Co. 289 Broadway. Paris. Goupil, Vibert & Cie.

Editeurs, 15. Boulevard Montmartre et 10 rue d'Enghien. London. Pubd. By E. Gambart & Co. 25 Berners St. Oxford St. [n.d., c.1855.]

Coloured lithograph highlighted with gum arabic, image 460 x 630mm. Light staining to title area. £680
A Cavalier King Charles spaniel and fox terrier alerted by someone approaching.

With publisher's blindstamp below publication line.

Stock: 8329

57. **[American Cockers]**

Henry Wilkinson.

Etching signed by the artist. 240 x 350mm (9½ x 13¾"). Limited edition: 6/250. £230

An etching by artist Henry Wilkinson (1921-2011) who specialised in sporting dogs and scenes.

Stock: 47919

58. **"A Perfect Retrieve" [pencil, lower left.] Ward Binks [signed in pencil lower right.]**

[n.d., c.1930s.]

Coloured etching and aquatint, 260 x 325mm. 10¼ x 12¾". Old mount residue. £280

A black Labrador retrieving a pheasant on a shoot.

By Reuben Ward Binks (English, 1880 - 1950), gun dog portraitist and illustrator. He accepted royal commissions on a regular basis. Among others, Binks completed portraits of the Prince of Wales' Cairn Terriers, Cora, John and Hamish; the Duke of York's Labrador Retriever, Glen; and the Duke of Gloucester's rough-haired Fox Terrier, Kris. Indeed, portraits of royal dogs which the artist completed during the reigns of Queen Victoria, King Edward VII and King George V are hung throughout the royal residence at Sandringham.

'Warwick Galleries Artists Proof' blindstamp lower right. *Guichard: pg.26.*

Stock: 10891

59. **[Clumber Spaniel.][Clumber & Falcon.]**

Henry Wilkinson.

Etching signed by the artist. 240 x 295mm (9½ x 11¾"). Limited edition: 3/150. £160

An etching by artist Henry Wilkinson (1921-2011) who specialised in sporting dogs and scenes.

Stock: 60153

60. **[Clumber Spaniel & Pheasant.]**

Henry Wilkinson.

Etching signed by the artist. 240 x 350mm (9½ x 13¾"). Limited edition: 29/250. £160

An etching by artist Henry Wilkinson (1921-2011) who specialised in sporting dogs and scenes.

Stock: 60152

61. **[Clumber & Pheasant.]**

Henry Wilkinson.

Etching signed by the artist. 120 x 110mm (4¾ x 4¼"), with very large margins. Limited edition: 12/250. Mint. £120

An etching by artist Henry Wilkinson (1921-2011) who specialised in sporting dogs and scenes.

Stock: 59690

62. **[Foresters.] No.20.**

Maud Earl. Copyright 1902, by Photographische Gesellschaft. Published by the Berlin Photographic Company Berlin - London W. 133 New Bond Street - New York 14 East 23rd Street.

Photogravure. Plate 304 x 375mm. 12 x 14¾". £330
Clumber Spaniels, 'Champion Rose of Hardwick' & 'Brave of Hardwick'. Owner Her Grace the Duchess of Newcastle. *No. 20 British Hounds & Gundogs.*

Stock: 16003

63. **Huhnerhund u. Waldschnepfe / Cocker and Woodcock.**

[after Richard Ansdell] Berlin P. Sala & Co. Uter den Linden 57.

Lithograph 260 x 320mm, image. Glue stains from verso in sky. £220

German lithograph of the popular Richard Ansdell picture.
Stock: 417

64. **Cocker and Woodcock.**

Richard Ansdell. H.T.Ryall. London. Published May 1, 1855, by Lloyd Brothers & Co., Ludgate Hill.
Mixed method engraving. 370 x 270mm. £320
Stock: 418



65. **[A Cocker Spaniel.]**

H.D. Herbert Dickee [pencil signature]. [Frost & Reed, c.1930.]

Rare etching, signed by the artist in pencil, Frost & Reed blindstamp, limited edition 28/200. 325 x 240mm (12¾ x 9½"). Framed. Unexamined out of frame. £850
A black and white Cocker Spaniel head. Herbert Thomas Dicksee (1862-1942) was an English painter who specialised in paintings of dogs and animals. He studied at the Slade School of Art and his first painting was exhibited in 1881. His paintings were usually done from life; he kept numerous dogs as pets and frequented London Zoo. His daughter, Dorothy was the executor of his will, which directed her to destroy most of the plates for his etchings. *From the celebrated collection of Bryan & Valerie Steele.*
Stock: 54914

66. **[Cocker Spaniel.][Golden Cockers.]**

Henry Wilkinson.
Etching signed by the artist. 240 x 295mm (9½ x 11¾"). Limited edition: 124/150. £170
An etching by artist Henry Wilkinson (1921-2011) who specialised in sporting dogs and scenes.
Stock: 47914

67. **[Cocker Spaniel pair watching a duck.]**

G.Vernon Stokes.
Coloured drypoint etching, 41 of 75, signed by the artist. 250 x 305mm. £340
Stock: 5733

68. **[Black Cocker Spaniels.]**

Henry Wilkinson.
Etching signed by the artist. 245 x 300mm (9¾ x 11¾"). Limited edition: 37/200. £230
An etching by artist Henry Wilkinson (1921-2011) who specialised in sporting dogs and scenes.
Stock: 47921

69. **[Cocker Spaniel.]**

Henry Wilkinson.
Coloured etching signed by the artist. 250 x 300mm (9¾ x 11¾"), with very large margins. Limited edition: 64/150. Some foxing. £190
An etching by artist Henry Wilkinson (1921-2011) who specialised in sporting dogs and scenes.
Stock: 59693

70. **[Pair of Cockers.]**

Henry Wilkinson.
Etching signed by the artist. 125 x 120mm (5 x 4¾"), with very large margins. Limited edition: 193/250. Mint. £120
An etching by artist Henry Wilkinson (1921-2011) who specialised in sporting dogs and scenes.
Stock: 59704

71. **[Black and White Cocker.]**

Henry Wilkinson.
Coloured etching signed by the artist. 175 x 225mm (7 x 8¾"), with very large margins. Limited edition: 236/250. Mint. £170
An etching by artist Henry Wilkinson (1921-2011) who specialised in sporting dogs and scenes.
Stock: 59705

72. **[Pair of Cocker Spaniels.]**

Henry Wilkinson.
Coloured etching signed by the artist. 240 x 300mm (9½ x 11¾"), with very large margins. Limited edition: 65/250. Mint. £180
An etching by artist Henry Wilkinson (1921-2011) who specialised in sporting dogs and scenes.
Stock: 59715

73. **[Cocker Spaniels.][Merry Cockers.]**

Henry Wilkinson.
Etching signed by the artist. 240 x 345mm (9½ x 13½"). Limited edition: 76/150. £170
An etching by artist Henry Wilkinson (1921-2011) who specialised in sporting dogs and scenes.
Stock: 47911

74. **[October - A Busy Team.]**

Maud Earl. [Signed in plate and in pencil.] Copyright, 1906, Photographische Gesellschaft. Published by the Berlin Photographic Company, Berlin - London W. 133 New Bond Street - New-York 14 East 23rd Street. Colour photogravure, Limited to 100 signed proofs, image 210 x 355mm. 8¼ x 14". Sheet trimmed and laid to card. £270
Cocker Spaniels by Maud Alice Earl (1864 - 1943), a n eminent British-American canine painter.

For the 'Sportsman's Year'.
Berlin Photographic Company blindstamp lower left.
Stock: 13131

75. **[October - A Busy Team.]**

Maud Earl. Copyright 1906. Published by the Berlin Photographic Company Berlin - London W. 133 New Bond Street.
Colour photogravure. 220 x 350mm. £380
Cocker Spaniels by Maud Alice Earl (1864 - 1943), a n eminent British-American canine painter.
Stock: 2240

76. **[Cocker & Woodcock.]**

Henry Wilkinson.
Etching signed by the artist. 105 x 95mm (4 x 3¾"), with very large margins. Limited edition: 246/250.
Mint. £120
An etching by artist Henry Wilkinson (1921-2011) who specialised in sporting dogs and scenes.
Stock: 59666

77. **[Cani D'Inghilterra.]**

[n.d., c.1800.]
Hand-coloured engraving, scarce. Plate: 360 x 265mm (14 x 10½"), with large margins £180
A scene showing two dogs which resemble spaniels.
Stock: 47745

78. **[Pair of English Setters]**

Henry Wilkinson.
Coloured etching signed by the artist, 235 x 342mm (9¼" x 13½"). Limited edition 94/250. £220
An etching by artist Henry Wilkinson (1921-2011) who specialised in sporting dogs and scenes.
Stock: 9701

79. **[Evening.]**

Frederick Tayler lithotint. C. Hullmandel's Patent.
[n.d., c.1845.]
Lithotint. Sheet: 365 x 540mm (14½ x 21¼"). Foxing in large margins. £230
A scene in a kennel in which a pack of tired setters & pointers all lie on the floor exhausted after a days work.
Stock: 47455

80. **[Fighting Dogs.]**

G.Morland. [Published Jany 1. 1800 by John P Thompson, Gt Newport Street, London.]
Soft ground etching. Printed area 380 x 430mm. Some creasing, small tears in wide margins. £180
Fighting bulldogs watched by a spaniel.
Stock: 8128

81. **[Flatcoat Path.]**

Henry Wilkinson.
Coloured etching signed by the artist. 175 x 225mm (7 x 8¾"), with very large margins. Limited edition: 75/150. Mint. £170
An etching by artist Henry Wilkinson (1921-2011) who specialised in sporting dogs and scenes.
Stock: 59671

82. **[Flatcoat Retrieving Partridge.]**

Henry Wilkinson.
Coloured etching signed by the artist. 165 x 145mm (6½ x 5¾"), with very large margins. Limited edition: 106/150. Mint. £190
An etching by artist Henry Wilkinson (1921-2011) who specialised in sporting dogs and scenes.
Stock: 59668

83. **[Flatcoats & Partridges.]**

Henry Wilkinson.
Coloured etching signed by the artist. 235 x 350mm (9¼ x 13¾"), with very large margins. Limited edition: 171/250. Mint. £180
An etching by artist Henry Wilkinson (1921-2011) who specialised in sporting dogs and scenes.
Stock: 59672



84. **[Flatcoat & Black Grouse.]**

Henry Wilkinson.
Coloured etching signed by the artist. 165 x 140mm (6½ x 5½"), with very large margins. Limited edition: 52/150. Mint. £190
An etching by artist Henry Wilkinson (1921-2011) who specialised in sporting dogs and scenes.
Stock: 59664

85. **[Golden Labrador]**

Henry Wilkinson.
Coloured etching signed by the artist. 178 x 222mm (7" x 8¾"). Limited edition: 148/250. £150
An etching by artist Henry Wilkinson (1921-2011) who specialised in sporting dogs and scenes.
Stock: 9704

86. **Golden Retriever. [Pencil title]**

Lucy Dawson [Signed in pencil] [n.d. c.1930]
Etching 175 x 255mm. £360
Lucy Dawson d.1954 was noted for her paintings and etchings of dogs of all breeds. Under the pseudonym 'Mac' she illustrated books as well.
Stock: 1597

87. **[Golden Retriever & Squirrel.]**

Henry Wilkinson.

Coloured etching signed by the artist. 241 x 336mm (9½" x 13¼"). Limited edition 148/200. £170

An etching by artist Henry Wilkinson (1921-2011) who specialised in sporting dogs and scenes.

Stock: 9709



88. **[Gordon Highlanders.]**

Maud Earl. Copyright 1902. Published by the Berlin Photographic Company Berlin - London V. 133 New Bond Street.

Photogravure, 300 x 370mm. slight foxing on plate mark and margin £300

Gordon Setters, 'Heather Countess' & Heather Ronald'. - Owner - Robert Chapman, Esqr. *No.13 British Hounds & Gundogs - limited to 500.*

Stock: 36022

89. **[Gordon Setters]**

Henry Wilkinson.

Coloured etching signed by the artist. 241 x 349mm (9½" x 13¾"). Limited edition 193/200. £230

An etching by artist Henry Wilkinson (1921-2011) who specialised in sporting dogs and scenes.

Stock: 9695

90. **[Black Labrador in the marsh.]**

G.Vernon Stokes.

Coloured drypoint etching, 57 of 75, signed by the artist. 205 x 280mm. £380

Stock: 5728

91. **[Black Labrador & Pheasant.]**

Henry Wilkinson.

Coloured etching signed by the artist. 180 x 225mm (7 x 9"), with very large margins. Limited edition: 244/250. Mint £220

An etching by artist Henry Wilkinson (1921-2011) who specialised in sporting dogs and scenes.

Stock: 59669

92. **[Black Labrador.]**

Henry Wilkinson.

Coloured etching signed by the artist. 175 x 220mm (7 x 8¾"), with very large margins. Limited edition: 52/250. Mint. £160

An etching by artist Henry Wilkinson (1921-2011) who specialised in sporting dogs and scenes.

Stock: 59670

93. **[Chocolate Labrador.]**

Henry Wilkinson.

Etching signed by the artist. 245 x 300mm (9¾ x 11¾"). Limited edition: 64/200. £170

An etching by artist Henry Wilkinson (1921-2011) who specialised in sporting dogs and scenes.

Stock: 47926

94. **[Surprised - yellow labrador and cat]**

Henry Wilkinson.

Coloured etching signed by the artist. 235 x 298mm (9¼" x 11¾"). Limited edition: 16/150. £170

An etching by artist Henry Wilkinson (1921-2011) who specialised in sporting dogs and scenes.

Stock: 9691

95. **[Yellow Labrador & Rabbit.]**

Henry Wilkinson.

Etching signed by the artist. 240 x 350mm (9½ x 13¾"). Limited edition: 45/250. £170

An etching by artist Henry Wilkinson (1921-2011) who specialised in sporting dogs and scenes.

Stock: 47918

96. **[Labrador & Puppy.][Lost & Found.]**

Henry Wilkinson.

Etching signed by the artist. 235 x 290mm (9 x 11½"). Limited edition: 2/150. £170

An etching by artist Henry Wilkinson (1921-2011) who specialised in sporting dogs and scenes.

Stock: 47897

97. **[Labrador & Cat.][Surprised.]**

Henry Wilkinson.

Etching signed by the artist. 235 x 300mm (9 x 11¾"). Limited edition: 11/150. £170

An etching by artist Henry Wilkinson (1921-2011) who specialised in sporting dogs and scenes.

Stock: 47896

98. **[Yellow Labrador & Mallard.]**

Henry Wilkinson.

Etching signed by the artist. 180 x 215mm (7 x 8½"). Limited edition: 47/250. £220

An etching by artist Henry Wilkinson (1921-2011) who specialised in sporting dogs and scenes.

Stock: 47894

99. **[Yellow Labrador & Pheasant.]**

Henry Wilkinson.

Etching signed by the artist. 110 x 95mm (4¼ x 3¾"). Limited edition: 242/250. £180

An etching by artist Henry Wilkinson (1921-2011) who specialised in sporting dogs and scenes.

Stock: 47893

100. **[Yellow Labrador & Pheasant.]**

Henry Wilkinson.

Etching signed by the artist. 170 x 215mm (6¾ x 8½").

Limited edition: 28/150. £220

An etching by artist Henry Wilkinson (1921-2011) who specialised in sporting dogs and scenes.

Stock: 47892



101. **[Golden Labrador & Springer Spaniel.]**

G.Vernon Stokes.

Coloured drypoint etching, 51 of 75, signed by the artist. 250 x 295mm.

£320

Stock: 5737

102. **[Black Labrador & Woodcock]**

Henry Wilkinson.

Coloured etching signed by the artist. 245 x 345mm (9¾ x 13½"). Limited edition: 60/250.

£170

An etching by artist Henry Wilkinson (1921-2011) who specialised in sporting dogs and scenes.

Stock: 9703

103. **[Yellow & Black Labrador.]**

Henry Wilkinson.

Etching signed by the artist. 240 x 350mm (9½ x 13¾"). Limited edition: 57/250.

£170

An etching by artist Henry Wilkinson (1921-2011) who specialised in sporting dogs and scenes.

Stock: 47920

104. **[Black Labrador & Pheasant.]**

G.Vernon Stokes.

Framed coloured drypoint etching, 245 x 290mm (9¾ x 11½") Edition: 47/75.

£320

A black labrador carrying a pheasant. By animal artist George Vernon Stokes (1873-1954).

Stock: 60158

105. **[Golden Labrador & Springer Spaniel.]**

G.Vernon Stokes.

Framed coloured drypoint etching, 250 x 295mm (9¾ x 11½") Edition: 8/75. Unexamined out of frame.

£320

A golden retriever and a springer spaniel watching some birds. By animal artist George Vernon Stokes (1873-1954).

Stock: 60160

106. **[Black Labrador & Pheasant.]**

G.Vernon Stokes.

Coloured drypoint etching on india, 41 of 75, signed by the artist. 245 x 290mm.

£280

Stock: 5730

107. **[Black Labrador & Woodcock]**

Henry Wilkinson.

Coloured etching signed by the artist. 245 x 345mm (9¾ x 13½"). Limited edition: 67/250.

£170

An etching by artist Henry Wilkinson (1921-2011) who specialised in sporting dogs and scenes.

Stock: 60170

108. **[Pair of Black Labradors.]**

Henry Wilkinson.

Etching signed by the artist. 125 x 115mm (5 x 4½"), with very large margins. Limited edition: 126/150.

Mint.

£120

An etching by artist Henry Wilkinson (1921-2011) who specialised in sporting dogs and scenes.

Stock: 59665

109. **Setters.**

Painted by G. Morland. Engraved by S. Reynolds.

London Pub. by Morgan. [n.d., c.1800]

A very rare mezzotint. 330 x 380mm (13 x 15") Foxing in margins and title area; creasing.

£450

Reverse copy, possibly French, of Samuel Reynolds' 1799 mezzotint (Whitman 405) published by Morgan.

Not in BM. Ex: the Collection of the Hon. C. Lennox-Boyd.

Stock: 14865

110. **[Labrador] [Partridge Shooting.]**

Henry Wilkinson.

Coloured etching signed by the artist. 247 x 362mm (9¾" x 14¼"). Limited edition: 93/100.

£230

A golden labrador watching a gun. An etching by artist Henry Wilkinson (1921-2011) who specialised in sporting dogs and scenes.

Stock: 9692

111. **Pointer.**

Painted by A. Cooper R.A. Drawn on Stone by

Thomas Fairland. London, Published by Harding and King, 24, Cornhill 21st. Jany. 1834. Printed by Graf & Soret.

Fine lithograph on india paper. India 285 x 210mm.

11¼ x 8¼".

£140

Fine study of a pointer dog's head, in profile, sloping bank and vegetation to background.

After Abraham Cooper (1787 - 1868), from a series of 12 'The Sportsman's Kennel, A Series of Heads of the principal British Sporting Dogs...Executed in

Lithography by Thos. Fairland, after pictures painted

from the life', 1833-1835. This is an earlier printing than impressions bearing the publication line 'B.B.

King Monument Yard' (cf. item 1377), since King was

in partnership with F.G. Harding c.1832-1834. See *Siltzer p.96.*

Stock: 19448

112. **[German Shothaired Pointers.]**

Henry Wilkinson.

Etching, signed by the artist. 240 x 345mm (9½ x 13½"). Limited edition: 87/200. £170

An etching by artist Henry Wilkinson (1921-2011) who specialised in sporting dogs and scenes.

Stock: 47924

113. **Chien d'arrêt.**

Rosa Bonheur pinx. J. Aubert lith. Imp. Lemerrier Paris. Paris, François Delaruem 18, Rue J.J. Rousseau. Paris, H. Peyrol Editeur, 7, Rue Depuytren, London. New-York _ Published by M. Knœdler. [n.d., c.1860.] Lithograph. Printed area 500 x 370mm (19¾ x 14½"), publisher's blind stamp. £380

A portrait of a pointer-type dog, looking over a fence. A 'chien d'arrêt' is any retrieving gun dog.

Stock: 46259

114. **Pointer (Chien d'arret) Et Perdrix.**

Lithographie par Albert Adam. Imp Becquet rue des Noyers, 37. Paris G. Leroux Edit Rue St. André des Arts 43. London _ F. Herbault. 166 Strand. Coloured lithograph. 510 x 375mm (20 x 14¾"). £490

A pointer retrieving a partridge.

Stock: 24

115. **Pointer.**

Painted by A. Cooper R.A. Drawn on Stone by Thos. Fairland. London. Published by B.B.King Monument Yard. Printed by Graf & Soret. [n.d. 1836.]

Lithograph. 205 x 275mm. £190

Stock: 1377

116. **[English Pointer & Hare.]**

Henry Wilkinson.

Etching, signed by the artist. 240 x 345mm (9½ x 13½"). Limited edition: 13/250. £170

An etching by artist Henry Wilkinson (1921-2011) who specialised in sporting dogs and scenes.

Stock: 47922

117. **Pointer & Partridge.**

Richard Ansdell. H.T.Ryall. London. Published May 1, 1855, by Lloyd Brothers & Co., Ludgate Hill.

Mixed method engraving. 370 x 270mm. Tears to edges. £320

Stock: 425

118. **To Sir John Shelley Bar.t This Print of his Celebrated Pointer (Sancho), Is with permission humbly dedicated by his most obedient & very humble Serv.t. C.Turner.**

Painted by Benj.n Marshall. Engraved by C. Turner. London, Published March 20, 1808 by C.Random D.B. at his Sporting Gallery, No 65 Pall Mall, where a variety of Sporting Subjects are ready for Publication. Fine colour-printed stipple. Plate: 355 x 505mm (14 x 20"), with large margins. £550

A portrait of the pointer Sancho, owned by Sir John Shelley (1771-1849), an amateur cricket player and breeder of thoroughbred horses.

Stock: 46705

119. **Pointers.**

H. Alken del.t. I.Clark sculp.t. London, Published by T.McLean, Jan.y. 1.1820.

Coloured aquatint. 280 x 376mm (11 x 14¾").

Trimmed; marking around image. £240

Four pointers in a field with a river and hills behind.

Stock: 61

120. **[Black But Comely.] No.11.**

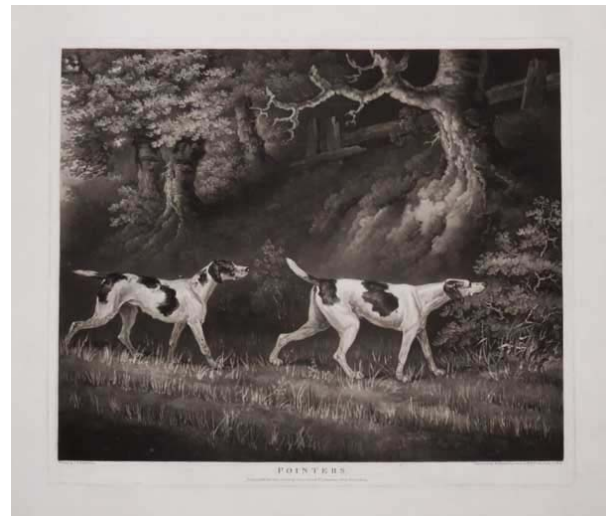
Maud Earl. Copyright 1902, by Photographische Gesellschaft. Published by the Berlin Photographic Company Berlin - London W. 133 New Bond Street _ New York 14 East 23rd Street.

Photogravure. Plate 306 x 369mm (12 x 14½"). £320

Black pointers, 'Lorne' & 'Kate'. - Owner - D.M.

Forbes, Esqr. *No. 11 British Hounds & Gundogs.*

Stock: 15990



121. **Pointers.**

Painted by T. N. Sartorius. Engraved by W. Ward Engraver to H.R.H the Duke of York. London Published June 16, 1806 by James Linnell No. 2, Streatam Street, Bloomsbury.

Mezzotint with large margins. Platemark: 375 x 440mm (14¾ x 17¼"). Fine impression. £420

Two dogs approaching bushes on the right, the nearest pointing, with trees and a fence on the bank above.

After British painter John Nost Sartorius (1759 - c.1828).

For a proof before all letters impression, see item ref: 6456, in a pair with [Setters].

Stock: 35404

122. **[Pointers]**

Maud Earl. Copyright 1906 by Photographische Gesellschaft. Berlin Photographic Company Berlin, London W, 133 New Bond Street; New York, 14 East 23rd Street. Copyright 1906

Photogravure on chine collé, printed in colours, signed by the artist in pencil. 420 x 590mm (16½ x 23¼"), with large margins. £400

Two pointers in heather.

Stock: 56248

123. **[Red Setter head.]**

Alice Banwell [Pencil signature.] [n.d, c.1930.]
Etching, signed by the artist. 150 x 110mm (6 x 4¼"),
with blindstamp 'Rembrandt Guild Artist's Proof', very
large margins. £140
Stock: 60115

124. **[A Maid of All Work.] No.16.**

Maud Earl. Copyright 1902, by Photographische
Gesellschaft. Published by the Berlin Photographic
Company Berlin - London W. 133 New Bond
Street New York 14 East 23rd Street.
Photogravure. Plate 388 x 290mm. 15¼ x 11½". £350
Flat-coated Retriever Champion 'Bring 'Em' - Owner -
H. Reginald Cooke, Esqr. *No.16 British Hounds &
Gundogs.*
Stock: 16005

125. **[Serving the Guns.]**

Maud Earl. Copyright 1902. Published by the Berlin
Photographic Company Berlin - London W. 133 New
Bond Street.
Photogravure, 300 x 370mm. slight foxing in margins
£260
Curly Coated Retriever, 'Preston Rattler'. - Owner -
Mrs Duerdin Dutton *No.17 British Hounds & Gundogs*
- limited to 500.
Stock: 2272

126. **[Golden Retriever & Mallard.]**

G.Vernon Stokes.
Coloured drypoint etching, 52 of 75, signed by the
artist. 250 x 290mm. £380
Stock: 5739



127. **Rector.**

Painted by Heywood Hardy. Engraved by J.B. Pratt.
Published 1906 by Thos. Agnew & Sons, 23 Old Bond
Street, London, Liverpool & Manchester Copyright.
Printed by F.G. Hardcastle.
Large mixed-method engraving on india paper, title in
open letters. 465 x 450mm, 18¼ x 17¾". A wonderful
impression, with full margins. Mint. £480
Magnificent portrait study of a black flat coat retriever,
landscape behind.

Heywood Hardy (1842 - 1933) was a painter and
watercolourist of animals and sporting subjects.
Stock: 23447

128. **[Golden Retriever & Mallard.]**

G.Vernon Stokes.
Framed coloured drypoint etching, 250 x 290mm (9¾ x
11½"). Edition: 54/75. Unexamined out of frame. £320
A golden retriever carrying a mallard. By animal artist
George Vernon Stokes (1873-1954).
Stock: 60159

129. **Hund Mit Fasan. / Retriever and
Pheasant.**

[after Richard Ansdell] Berlin P. Sala & Co. Uter den
Linden 57.
Lithograph 260 x 320mm, image. Glue stains from
verso in sky. £220
German lithograph of the popular Richard Ansdell
picture.
Stock: 427

130. **[Golden Retriever & Grouse.]**

Henry Wilkinson.
Etching signed by the artist. 105 x 95mm (4 x 3¾"),
with very large margins. Limited edition: 163/250.
Mint. £190
An etching by artist Henry Wilkinson (1921-2011)
who specialised in sporting dogs and scenes.
Stock: 59667

131. **[Irish Setter & Black Cocker Spaniel.]**

G.Vernon Stokes.
Coloured drypoint etching, 38 of 75, signed by the
artist. 240 x 285mm. £280
Stock: 5736

132. **Macédoines No.12. Setter & Grouse**

E.d. Travies. Paris Ledot ainé Edit.r. rue de Rivoli 174.
London Gambart et c. 25 Berners St, Oxford St. [n.d.,
c.1840].
Coloured lithograph, printed area 220 x 270mm. £120
A setter stalking a partridge. The oval image is within a
very ornate lithographed border.
Stock: 6179

133. **Setter.**

Painted by A. Cooper R.A. Drawn on Stone by Thos.
Fairland. London. Published Jany. 1st 1836 by
B.B.King Monument Yard. Printed by Graf & Soret.
Lithograph. 205 x 275mm. £190
Stock: 1379

134. **[Irish Setter with Dead Woodcock &
Springer Spaniel].**

G.Vernon Stokes.
Coloured drypoint etching, 72 of 75, signed by the
artist. 210 x 280mm. £330
Stock: 5741

135. **[Irish Setters.]**

G.Vernon Stokes. [signed in pencil.] [n.d. c.1930.]
Coloured etching, 235 x 285mm (9¼ x 11¼"). Edition:
27/75. Framed. Unexamined out of frame. £280
A pair of Irish Setters. By animal artist George Vernon
Stokes (1873-1954).
Stock: 59747

136. **[Setters on a moor.]**

G.Vernon Stokes. [signed in pencil.] [n.d. c.1930.]
Coloured etching, 250 x 300mm (10 x 11¾"). Edition:
29/75. Framed. Unexamined out of frame. £280
Two Setters in a moor. By animal artist George Vernon
Stokes (1873-1954).
Stock: 59746

137. **Setter & Grouse.**

Richard Ansdell. H.T. Ryall. London. Published May
1, 1855, by Lloyd Brothers & Co., Ludgate Hill.
Mixed method engraving. 370 x 270mm (14½ x 10¼").
£260

A setter retrieving a dead grouse.
Stock: 429



138. **[Setters and Pointers] Ready. [&] Steady.**

G. Muss-Arnolt. Published by Oscar Rudolph, New
York. London, Richard C. Hall u. Co. 72 Dean Str. W.
- Printed in Berlin. [n.d., c.1900.]
Pair of colour-printed photogravures on chin collé,
rare. Each 450 x 550mm (17¾ x 21¾"). Laid on board.
£440

Scenes of setter and pointer pairs in the field.
Gustav Muss-Arnolt (1858-1927), German-born
animal painter who emigrated to America c.1890,

becoming a director of the American Kennel Club,
licensed to judge all breeds in dog shows.
Stock: 47810

139. **[Marbled Beauties.] No.12.**

Maud Earl. Copyright 1902, by Photographische
Gesellschaft. Published by the Berlin Photographic
Company Berlin - London W. 133 New Bond
Street - New York 14 East 23rd Street.
Photogravure. Laid, on India paper. Platemark: 295 x
370mm (11½ x 14½"), very large margins. Uncut.
£320
English Setters, 'Compton Damsel' & 'Compton Dinah'.
- Owner - B. F. Warwick, Esqr. *No. 12 British Hounds
& Gundogs - 206/500.*
Stock: 40038

140. **Setters.**

H. Alken del.t. I.Clark sculp.t. London, Published by
T.McLean, Jan.y. 1.1820.
Coloured aquatint. Paper watermarked: Whatman
1824. Plate 280 x 381mm. 11 x 15". Marking around
the image. £260
Three setters running in the rolling hills of the British
countryside.
Stock: 63

141. **[Better Than Rubies.]**

Maud Earl. Copyright 1908. Published by the Berlin
Photographic Company Berlin - London W. 133 New
Bond Street.
Photogravure. Plate: 370 x 300, (14½ x 12"), with very
large margins. £300
Two Irish Setters, 'Barton Punch' & Killenane,' owned
by Robert O'Callaghan Esqr. *No.14 British Hounds &
Gundogs - limited to 500.*
Stock: 40208

142. **[Setters.]**

Maud Earl. Copyright 1906 by Photographische
Gesellschaft. Berlin Photographic Company Berlin,
London W, 133 New Bond Street; New York, 14 East
23rd Street. Copyright 1906
Photogravure on chine collé, printed in colours, signed
by the artist in pencil. 420 x 590mm (16½ x 23¼"),
with large margins. £420
Two Setters in long grass.
Stock: 56247

143. **[Spaniels & Partridge]**

G.Vernon Stokes.
Coloured drypoint etching, 29 of 75, signed by the
artist. 250 x 305mm. £340
Stock: 5746

144. **[Spaniel & Pheasant].**

G.Vernon Stokes.
Coloured drypoint etching, 39 of 75, signed by the
artist. 290 x 245mm (11½ x 9½") very large margins.
£360
A Spaniel chasing a pheasant. By animal artist George
Vernon Stokes (1873-1954).
Stock: 53655

145. **[Spaniels & Partridge]**

G.Vernon Stokes.

Framed coloured drypoint etching, 250 x 300mm (9¾ x 11¾"). Edition: 36/75. Unexamined out of frame. £320
A pair of Spaniels watching some partridges. By animal artist George Vernon Stokes (1873-1954).
Stock: **60157**

146. **[Spaniel looking at flying mallard.]**

G. Vernon Stokes [signed in plate and in pencil.] [n.d., c.1930s.]

Coloured drypoint etching, from a limited edition numbered 75/75 in pencil, 260 x 300mm. 10¼ x 11¾".
£340

A spaniel in a stream in a marshy landscape; looking up to the sky at ducks flying overhead.

George Vernon Stokes (1873 - 1954).

Stock: **19440**

147. **[North and South.][Westie & Springer.]**

Henry Wilkinson.

Coloured etching signed by the artist. 235 x 300mm (9¼ x 11¾"), with very large margins. Limited edition: 4/150. Mint. £250

An etching by artist Henry Wilkinson (1921-2011) who specialised in sporting dogs and scenes.

Stock: **59663**

148. **[Spaniel looking at flying mallard.]**

G. Vernon Stokes [signed in plate and in pencil.] [n.d., c.1930s.]

Framed coloured drypoint etching, 260 x 300mm (10¼ x 11¾"). Edition: 18/75 in pencil. Unexamined out of frame. £320

A spaniel in a stream in a marshy landscape; looking up to the sky at ducks flying overhead. By animal artist

George Vernon Stokes (1873-1954).

Stock: **60169**



149. **[Arrêt sur les faisans. 'Pheasant pointing.']**

[D'après Gélibert.] Copyright 1893 by Boussod, Valadon & Co. Printed in Paris.

Very fine photogravure, printed in colours, original printed title stuck verso right. Printed area: 450 x 330mm (17¾ x 13") with very large margins. Paper

soiled in borders. Rubs and scuffs with foxing. Some tears to the edges. £480

A Clumber Spaniel startles a group of pheasants in a field.

After French painter Jules Bertrand Gélibert (1834 - 1916).

Stock: **52822**

150. **Wachtelhund und Ente / Spaniel and Wild duck.**

[after Richard Ansdell] Berlin P. Sala & Co. Uter den Linden 57.

Lithograph 260 x 320mm, image. Glue stains from verso in sky. £190

German lithograph of the popular Richard Ansdell picture.

Stock: **430**

151. **[Sprightly Springers.]**

Henry Wilkinson.

Coloured etching signed by the artist. 235 x 345mm (9¼ x 13½"), with very large margins. Limited edition: 62/150. Mint. £180

An etching by artist Henry Wilkinson (1921-2011) who specialised in sporting dogs and scenes.

Stock: **59707**

152. **[Irish Water Spaniels.]**

Henry Wilkinson.

Coloured etching signed by the artist. 255 x 350mm (10 x 13¾"), with very large margins. Limited edition: 50/250. Mint. £180

An etching by artist Henry Wilkinson (1921-2011) who specialised in sporting dogs and scenes.

Stock: **59706**

153. **[Pair of Welsh Springers.]**

Henry Wilkinson.

Coloured etching signed by the artist. 240 x 300mm (9½ x 11¾"), with very large margins. Limited edition: 18/250. Mint. £180

An etching by artist Henry Wilkinson (1921-2011) who specialised in sporting dogs and scenes.

Stock: **59714**

154. **[Springer Spaniels.]**

Henry Wilkinson. Published by H.C. Dickins, 9 Great Pulteney St. W.1.

Coloured etching signed by the artist. 200 x 295mm (8 x 11½"). Limited edition: 54/75. Framed. Unexamined out of frame. £280

An etching by artist Henry Wilkinson (1921-2011) who specialised in sporting dogs and scenes.

Stock: **59745**

155. **[Springer Spaniel.]**

Henry Wilkinson.

Coloured etching signed by the artist. 180 x 225mm (7 x 9"), with very large margins. Limited edition: 136/250. Mint. £170

An etching by artist Henry Wilkinson (1921-2011) who specialised in sporting dogs and scenes.

Stock: **59691**

156. **[Springer Spaniel] Surprisé [pencil].**

Paul Wood [pencil.] © Paris Etching Society NY U.S.A. [n.d., c.1935.]

Aquatint and etching, printed in colours, titled and signed in pencil by the artist. 225 x 170mm (9 x 6¾"). Ink stamp 'Made in France' on verso. £65

A springer spaniel surprised by a woodcock taking flight, by Paul Wood (1897-1964).

Wood, who studied art at both the Springfield School of Fine Arts in Massachusetts and at the Art Students League in New York, specialised in watercolours and etchings of dogs.

Stock: 46170



157. **Water Spaniel**

Painted by A. Cooper R.A. Drawn on Stone by Thos. Fairland. [n.d. 1835] London. Published by B.B.King Monument Yard. Printed by Graf & Soret

Lithograph 205 x 275mm Minor crease in margin.

£190

Stock: 1381

158. **[Springer Spaniels and Pheasant.]**

G.Vernon Stokes. [signed in pencil.] [n.d. c.1930.]

Coloured etching, 255 x 295mm (10 x 11¾"). Edition: 8/75. Framed. Unexamined out of frame. £320

A pair of Springer Spaniels watching a pheasant. By animal artist George Vernon Stokes (1873-1954).

Stock: 59749

159. **Spaniels.**

H. Alken del.t. I.Clark sculp.t. London, Published by T.McLean, Jan.y 1.1820.

Etching with coloured aquatint. 280 x 380mm (11 x 15"). Minor discolouration to sky area top left. £260

Stock: 64

160. **[Springer Spaniel.][Springers in the Marsh.]**

Henry Wilkinson.

Etching signed by the artist. 245 x 300mm (9¾ x 11¾"). Limited edition: 211/200. £170

An etching by artist Henry Wilkinson (1921-2011) who specialised in sporting dogs and scenes.

Stock: 47925



161. **La Convoitise. Épagneul & Havanais. The Greedy Dogs _ Codicia.**

Lithog par J. Didier d'après le tableau original de Zacharie Noterman. Paris, Desgodets et C.ie 20 Rue Hautefeuille. London V.or Delarue. Imp. Lemerrier, rue de Seine 57 Paris. [n.d. c.1860.]

Coloured lithograph. 601 x 776mm. 23¾ x 30½".

Repaired tears.

£480

A Springer spaniel and a terrier staring at fish in a dish on the side, a dead hare lying over a bench, and oysters in a basket on the floor.

Stock: 25913

162. **[Springing Spaniels.]**

[Painted by Philip Reinagle Engraved by Lewis.] [n.d., 1806.]

Proof aquatint. 610 x 475mm. A very fine print, mint.

£520

Philip Reinagle, (1745-1833), ARA and later RA.

Animal and flower painter. *Siltzer: pg. 235.*

Stock: 7054

163. **[Springer Spaniels] [Mother & Daughter]**

Henry Wilkinson.

Coloured etching signed by the artist. 171 x 222mm (6¾ x 8¾"). Limited edition 39/250. £160

An etching by artist Henry Wilkinson (1921-2011) who specialised in sporting dogs and scenes.

Stock: 9707

164. **[Welsh Springer]**

Henry Wilkinson.

Coloured etching signed by the artist. 293 x 248mm (11½" x 9¾"). Limited edition: 109/150. £230

An etching by artist Henry Wilkinson (1921-2011) who specialised in sporting dogs and scenes.

Stock: 9683

165. **[Welsh Springer & Partridge.]**

Henry Wilkinson.

Etching signed by the artist. 240 x 295mm (9½ x 11¾"). Limited edition: 45/250. £230

An etching by artist Henry Wilkinson (1921-2011) who specialised in sporting dogs and scenes.

Stock: 47915

166. **[Welsh Springers]**

Henry Wilkinson.

Coloured etching signed by the artist. 235 x 298mm (9¼" x 11¾"). Limited edition 22/250. £170

An etching by artist Henry Wilkinson (1921-2011) who specialised in sporting dogs and scenes.

Stock: **9681**



167. **[Welsh Springer Spaniel Puppies] [April - The Raw Material.]**

Maud Earl. Copyright 1906 by Photographische Gesellschaft. Berlin Photographic Company Berlin, London W, 133 New Bond Street; New York, 14 East 23rd Street. Copyright 1906

Photogravure on chine collé, printed in colours. 280 x 420mm (11 x 16½"), with large margins. Spots in image. £380

A litter of Welsh Springers, one of twelve plates in Maud Earl's "Sportsman's Year".

Stock: **56245**

168. **[Afghan Hounds.]**

Henry Wilkinson.

Etching signed by the artist. 230 x 340mm (9 x 13½"). Limited edition: 3/150. £230

An etching by artist Henry Wilkinson (1921-2011) who specialised in sporting dogs and scenes.

Stock: **47908**

169. **[Basset and Griffon Vendéen.]**

O De. Penne [Facsimile signature.] [Goupil & Co., c.1880.]

Colour photolitho with hand finishing. 570 x 410mm. £420

Hunting Dogs at rest in a rural landscape. Early proof from Goupil's own stock.

Stock: **1662**

170. **[Basset Hounds.]**

Henry Wilkinson.

Coloured etching signed by the artist. 250 x 300mm (9¾" x 11¾"), with very large margins. Limited edition: 123/200. Mint. £220

An etching by artist Henry Wilkinson (1921-2011) who specialised in sporting dogs and scenes.

Stock: **59719**

171. **[American Bassett.]**

Henry Wilkinson.

Etching signed by the artist. 175 x 225mm (7 x 9"). Limited edition: 36/250. £190

An etching by artist Henry Wilkinson (1921-2011) who specialised in sporting dogs and scenes.

Stock: **47901**

172. **[Bassett Hounds.]**

Henry Wilkinson.

Etching signed by the artist. 250 x 300mm (10 x 11¾"). Limited edition: 73/75 very large margins £180

An etching by artist Henry Wilkinson (1921-2011) who specialised in sporting dogs and scenes.

Stock: **55301**

173. **[Bassett Hound & Green Woodpecker.]**

Henry Wilkinson.

Etching signed by the artist. 235 x 300mm (9¼" x 11¾"). Limited edition: 45/250. £170

An etching by artist Henry Wilkinson (1921-2011) who specialised in sporting dogs and scenes.

Stock: **47906**

174. **[Beagle.]**

O De. Penne [Facsimile signature.] [Goupil, c.1880.]

Colour photolitho with hand finishing. Oval, 495 x 420mm. Slight marginal staining. £420

Early proof from Goupil's own reserve stock.

Stock: **1663**

175. **[Puzzling it out.] No.7.**

Maud Earl. Copyright 1902, by Photographische Gesellschaft. Published by the Berlin Photographic Company Berlin - London W. 133 New Bond Street. New York 14 East 23rd Street.

Photogravure. 298 x 374mm. 11¾" x 14¾". £320

Beagles. - The Thrope Satchville Beagles - 'Delicate' and 'Cruiser'. - Owner - J. Otho Paget, Esqr. No. 7

British Hounds & Gundogs.

Stock: **15989**

176. **[Beagles] [January - A Check.]**

Maud Earl. Copyright 1906 by Photographische Gesellschaft. Published by the Berlin Photographic Company Berlin - London W. 133 New Bond Street.

Photogravure on chine collé, printed in colours. 280 x 420mm (11 x 16½"), with large margins. Slight spotting. £280

Three beagles in woodland, one of twelve plates in Maud Earl's "Sportsman's Year".

Stock: **56244**

177. **[Bloodhounds.]**

Henry Wilkinson.

Etching signed by the artist. 250 x 350mm (10 x 13¾"). Edition: 9/250. £170

An etching by artist Henry Wilkinson (1921-2011) who specialised in sporting dogs and scenes.

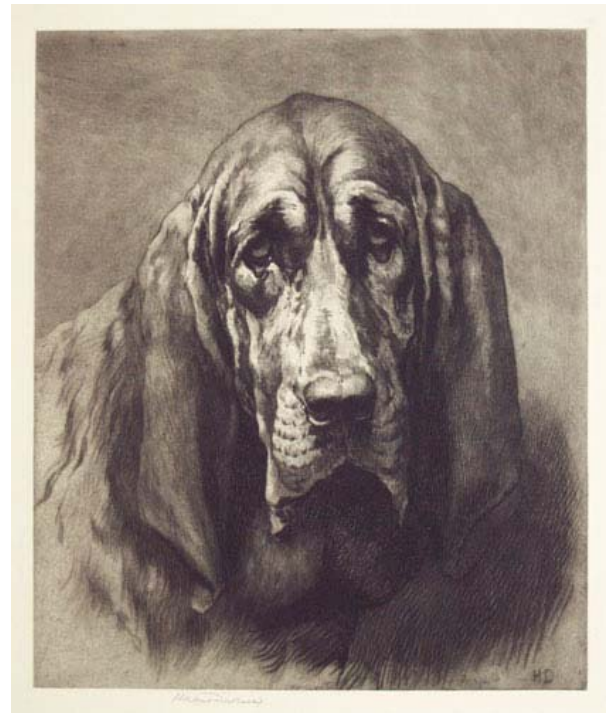
Stock: **47903**



178. **[Bloodhound - 'The Veteran'.]**
 HD 1921. Herbert Dicksee [pencil signature.]
 Copyright Frost & Reed, Ltd. 1921.
 Etching, limited edition of 250 signed proofs. 430 x 410mm (17 x 16¼"). Framed. Unexamined out of frame. £950
 A circular image of a bloodhound head. As the plate was destroyed at the end of the printing this etching is most uncommon. *From the celebrated collection of Bryan & Valerie Steele. See 20834 for unframed version.*
 Stock: 52124

179. **[The Sentinel.]**
 HD 1913. Herbert Dicksee [pencil signature.]
 Published at 8, Clare Street, Bristol by Frost & Reed Ltd. Printsellers of Bristol and London April 2nd. 1913 Berlin Stiefbold & Co. Postdamerstrasse 40 Copyright. Copyright by Frost & Reed Ltd (of Bristol England) in the United States of America.
 Etching on vellum, remarque proof, limited edition of 300 signed by the artist. 375 x 650mm (14¾ x 25½"). Frame with Frost and Reed label with the print's details. Unexamined out of frame. £1200
 A bloodhound lying down yet alert, with a remarque of a gauntlet. The plate was destroyed at the end of this print run so this etching is most uncommon.
 Stock: 50011

180. **[Bloodhound - 'The Veteran'.]**
 HD 1921. Herbert Dicksee [pencil signature.]
 Copyright Frost & Reed, Ltd. 1921.
 Etching, limited edition of 250 signed proofs. 430 x 410mm (17 x 16¼"). Uncut sheet, mint. £950
 A circular image of a bloodhound head. As the plate was destroyed at the end of the printing this etching is most uncommon. *Not in PSA.*
 Stock: 20834



181. **[Bloodhound head]**
 Herbert Dicksee [signed in pencil.] [Fine Art Society?, c.1900]
 Rare etching, signed artist's proof. 435 x 365 (17 x 14½"), with large margins, paper watermarked 'O.W.P. & A.C.L.'. £1350
 O.W. Paper & Arts Co. Ltd. was established by the English painter John William North (1842-1924) in 1895 to create fine paper for artists. It was used by printmakers including Whistler and Strang. *From the celebrated collection of Bryan & Valerie Steele.*
 Stock: 52657

182. **[Detectives.] No.1.**
 Maud Earl. Copyright 1902, by Photographische Gesellschaft. Published by the Berlin Photographic Company Berlin - London W. 133 New Bond Street - New York 14 East 23rd Street.
 Photogravure. Plate 304 x 375mm. 12 x 14¾". £280
 Bloodhounds, 'Panther' & 'Champion Wandle Welcome'. Owner - A. Croston-Smith Esqr. *No.1 British Hounds & Gundogs.*
 Stock: 15998

183. **[Vulcan.]**
 [Engraved by Charles Mottram, 1876.] [Inside plate: EL 1841.] [EL: artist's monogram.] London Published May 1.st 1876 by Henry Graves & Co, the Proprietors Publishers to H.M. the Queen &, T.R.H. The Prince & Princess of Wales, 6 Pall Mall, Copyright Registered. [Published by Henry Graves & Co. Printsellers and Publishers to Her Majesty the Queen and T.R.H. The Prince and Princess of Wales, Pall Mall, London. Sold by D. Woodcock & Co., 17, Farringdon Street, London.]
 Mixed method engraving, proof before letters on india. Printseller's Association Stamp. Artist Proof Edition, Limited to One Hundred Copies. Plate 430 x 539mm. 17 x 21¼". Uncut, mint. £420

A boarhound with a boar head. The crayon drawing is the property of Her Majesty the Queen and hangs at Windsor.

From "Her Majesty's Pets being a Collection of Twenty Steel-Plate Engravings from Paintings by Sir Edwin Landseer, R.A. By Special Permission of, and Dedicated to Her Most Gracious Majesty the Queen".
Ex Collection of Hon. Christopher Lennox-Boyd.
Stock: 23019

184. **[Borzoi.]**

[By Henri Riche.] [n.d., c.1930.]

Etching, touched proof. 340 x 225mm, 13½ x 9". Rust hole in sky. £160

Man restraining four borzoi. This proof has been touched with pencil.

Stock: 9289

185. **[Bulldog & Pigeon.]**

Henry Wilkinson.

Coloured etching signed by the artist. 240 x 300mm (9½ x 11¾"), with very large margins. Limited edition: 15/150. Mint. £180

An etching by artist Henry Wilkinson (1921-2011) who specialised in sporting dogs and scenes.

Stock: 59713

186. **Chiens de Chasse.**

Decamps del. Jules Collignon sc. Au Bureau de l'Artiste, Rue des Filles St. Thomas, 9 Place de la Bourse [n.d., c.1850.].

Mezzotint, with a blindstamp of Goupil & Co. 305 x 340mm (12 x 13½"), with large margins. £230

Three hounds lying in a wooded setting, a huntsman's bag and gun hanging behind.

Stock: 47821



187. **[Dandie Dinmont]**

David Gee [pencil signature]. [n.d., c.1950.]

Etching. 125 x 125mm (5 x 5"), very large margins.

£75

A Dandie Dinmont head.

Stock: 55435



188. **Patience.**

HG 1922 [Herbert Dicksee.] Copyright 1922 by Frost & Reed in the United States.

Etching. 410 x 660mm (16¼ x 26"). £850

A deerhound and a terrier waiting.

Stock: 1799

189. **Le Digestion.**

Peint par Alfred de Dreux. Lithographié par Emile Lassalle. Imprimé par Lemercier à Paris. Paris. Goupil & Vibert & C. ie Éditeurs. Boulevard Montmatre, 15, et rue d'Enghien 10. London _ E. Gambart, Junin & C.o 25 Berniers St, Oxford St.

Tinted lithograph, rare. Sheet 620 x 770mm (24½ x 30¾"), Goupil blindstamp, very large margins. Margins soiled. small tear in top edge. £320

A pair of hounds in a kennel, dozing after their meal.

Stock: 47433

190. **The Old Hound.**

Diana Thorne [pencil signature]. [n.d. c. 1920.]

Etching. 125 x 220mm. £220

Stock: 6125

191. **[Foxhound.]**

Arthur Wardle 1897.

Etching on india, printed in brown, signed in pencil by the artist. 220 x 280mm (8¾ x 11"). £240

Stock: 43345

192. **Limier de la Venerie - Sabro.**

[G.Jadin pinxt]. Pirodon lith. Imp. Lemercier & Co. Paris. Publie par Goupil & Compie. Editeurs Paris, London, La Haye, Berlin., n.d. c. 1870.

Lithograph. Printed area 370 x 445mm. £320

Louis Godefroy Jadin (1805-82) painted hunting scenes in both Napoleon III's rooms in the Louvre and the dining room of the Palace of Tuileries for Ferdinand-Philippe, Duke of Orleans.

Stock: 3420

193. **Limier de la Venerie - Verone.**

[G.Jadin pinxt]. Pirodon lith. Imp. Lemercier & Co. Paris. Publie par Goupil & Compie. Editeurs Paris, London, La Haye, Berlin., n.d. c. 1870.

Lithograph. Printed area 370 x 445mm. £320

Louis Godefroy Jadin (1805-82), painted hunting scenes in both Napoleon III's rooms in the Louvre and the dining room of the Palace of Tuileries for Ferdinand-Philippe, Duke of Orleans.

Stock: 3421

194. **[June - The Long Vacation.]**

Maud Earl. Photographische Gesellschaft - Berlin
Photographic Company Berlin, London W, 133 New
Bond Street; New York, 14 East 23rd Street. Copyright
1906

Colour photogravure, signed artist proof. 220 x
350mm, very large margins. £320

Four dogs sit in the shade, avoiding the bright June
sun. From 'the Sportsman's Calendar' by Maud Alice
Earl (1864-1943) an eminent British-American canine
painter. *See Ref: 36024*

Stock: 40207



195. **Limiers De La Venerie - Morico
Metamort Linda Rusteau.**

G.Jadin pinxt. E. Pirodon lith. Publie par Goupil &
Compie Editeurs Paris Londres, La Haye, Berlin.
Lithograph. Sheet 845 x 1074mm. 33¼ x 42¼". £620
Batard Saintongeais, Bauve de Bretagne, Bloodhound,
Saintongeais.

Louis Godefroy Jadin (1805-82) painted hunting
scenes in both Napoleon III's rooms in the Louvre and
the dining room of the Palace of Tuileries for
Ferdinand-Philippe, Duke of Orleans.

Stock: 22530

196. **[June - The Long Vacation.]**

Maud Earl. Photographische Gesellschaft - Berlin
Photographic Company Berlin, London W, 133 New
Bond Street; New York, 14 East 23rd Street. Copyright
1906

Colour photogravure, signed artist proof. 220 x
350mm. Extremely large margins. Original title pasted
to reverse as issued. £320

From 'the Sportsman's Calendar' by Maud Alice Earl
(1864-1943).

Stock: 36024

197. **Meute de le Mr.le Comte de Barral. -
Marcano, Séréno, Lentenor, Nicanor.**

G.Jadin pinxt. E. Firoday lith. Paris, Goupil & Co., n.d.
c. 1870.

Lithograph. Printed area 520 x 900mm. £620

A group portrait of four foxhounds by Louis Godefroy
Jadin (1805-82), painted hunting scenes in both
Napoleon III's rooms in the Louvre and the dining
room of the Palace of Tuileries for Ferdinand-Philippe,
Duke of Orleans.

Stock: 46162

198. **[Foxhounds outside their kennels.]**

On Stone by George Augustus Frederick Fitz Wygram
Esqr. Printed by C. Hullmandel. [n.d. c.1820.]

Rare lithograph on india, with very large margins.

Sheet: 495 x 635mm. 19½ x 25". £350

Foxhounds inside and outside their kennel area.

Probably from a private plate.

Stock: 39948

199. **[Foxhounds outside their kennels.]**

Drawn on Stone by George Augustus Frederick Fitz-
Wygram Esqr. [n.d., c.1820.]

Lithograph, image 270 x 405mm. 10½ x 16". Lightly
foxed. £350

An attractive lithograph. Very rare, possibly a private
plate.

Stock: 8883



200. **Modish. A remarkable fine Fox Hound
bred by Colonel Thornton, Modish was the
Daughter of Merlin & Rival both which
lineally discended from the celebrated
Ackham's Old Conqueror.**

S. Gilpin Pinx.t. Engraved by R. Pollard, Aqua.t by F.
Jukes. Published Feb.y 11, 1788 by S. Gilpin,
Knightsbridge & R. Pollard, No 15. Braynes Row, Spa
Fields, London.

Rare aquatint with engraving. Sheet 445 x 560mm
(17½ x 22"). Trimmed close to plate, some surface
wear and toning, some repairs. £590

A fox hound bitch with litter. The dog's owner, Colonel
Thomas Thornton (1757 - 1823), was a sportsman who
wrote 'A sporting tour through the northern parts of
England', 1804; and 'A sporting tour through various
parts of France in the year 1802', 1806.

Stock: 39719

201. **[June - The Long Vacation.]**

Maud Earl. Photographische Gesellschaft - Berlin
Photographic Company Berlin, London W, 133 New
Bond Street; New York, 14 East 23rd Street. Copyright
1906

Colour photogravure. 220 x 350mm. £190

Foxhounds from 'the Sportsman's Calendar' by Maud
Alice Earl (1864-1943).

Stock: 7448

202. **[Ancient Britons.] No.5.**

Maud Earl. Copyright 1902, by Photographische Gesellschaft. Published by the Berlin Photographic Company Berlin - London W. 133 New Bond Street New York 14 East 23rd Street.
Photogravure. Plate 305 x 368mm. 12 x 14½". £250
Welsh foxhounds, 'Trailer', 'Warrior' & 'Grafter'. No. 5
British Hounds & Gundogs.
Stock: 15997

203. **[Greyhounds] [The Slip]**

Henry Wilkinson.
Coloured etching signed by the artist. 190 x 228mm (7½" x 9"). Limited edition: 43/250. £190
A pair of greyhounds on leads held by a courser. An etching by artist Henry Wilkinson (1921-2011) who specialised in sporting dogs and scenes.
Stock: 9682

204. **Streamline. [Ink mss.]**

Diana Thorne [pencil signature.] [n.d. c. 1920.]
Etching. 300 x 150mm. Crease inside plate mark top right also through margin £160
Stock: 6128

205. **[Greyhound & Hare.]**

Henry Wilkinson.
Etching signed by the artist. 110 x 95mm (4½ x 3¾"). Limited edition: 33/250. £130
An etching by artist Henry Wilkinson (1921-2011) who specialised in sporting dogs and scenes.
Stock: 47899

206. **[Greyhound.]**

H. Rayner. Henry Rayner [pencil signature.] [n.d., c.1939.]
Drypoint etching. Platemark: 145 x 125mm (5¾ x 5"), with very large margins. £190
A portrait of a Greyhound. Limited to 15 pulls. Rayner (1902-1957) worked in the Antipodes before studying at the Royal Academy. He was a friend of Sickert.
Stock: 40130

207. **[A Grey-Hound's Head. In the small Breakfast Room at Houghton.]**

[Old Wyck Pinxit. Jos. Farington delin.t. Rich.d Earlom Sculpsit] [Published May 1st. 1777 by John Boydell engraver in Cheapside London]
Mezzotint, platemark 295 x 185mm (11¾ x 7¼"), with very large margins. Proof before letters. £240
Mezzotint after a painting by Thomas Wijck, from 'The Houghton Gallery', a set of 162 prints reproducing paintings from the collection of Sir Robert Walpole at Houghton. The project was initiated by John Boydell after it had become increasingly likely that the collection would have to be sold (the paintings were eventually sold to Catherine of Russia in 1778 and are now part of the Hermitage Museum's collections). The plates were published from 1774 to 1788 in two volumes.
Stock: 47411

208. **Basset Griffon Vendéen.**

O De. Penne [Facsimile signature.] [Goupil, c.1880.]
Colour photolitho with hand finishing. Oval, 480 x 410mm. £480
Early proof from Goupil's own reserve stock.
Stock: 1666



209. **[High Life.]**

Painted by Sir Edwin Landseer, R.A. Engraved by C.C. Hollyer. London Published Oct, 17th 1873 by Henry Graves & Co. Proprietors Publishers to H.M. the Queen, and to H.R.H the Prince & Princess of Wales, 6 Pall Mall Copyright Registered. Entered according to Act of Congress in the Year 1873 by William Schaus in the Office of the Librarian of Congress at Washington. Printsellers Association Blind stamp.
Mezzotint, Limited edition 205 proofs. 590 x 490mm. £420
The Deerhound image from Landseer's diptych "High Life / Low Life". *Printsellers:169. Letters but no engraved title.Ex: Collection of The Hon. C. Lennox-Boyd.*
Stock: 3678

210. **[A pack of hounds around a camp fire in a snowy wood.]**

[illegible signature.] [n.d., c.1880.]
Photogravure, fine colour. Image 580 x 420mm (22¾ x 16½"). Surface cracks & creases in image. £260
Unidentified European hunting dogs.
Stock: 47435

211. **[Hunting Dog lying on leopard skin]**

C.O. Murray del.t & aft.
Rare etching. India paper proof with publishers' stamp, Plate 274 x 355mm. 10¾ x 14". £240

A dog lying, with one eye open looking at viewer, on a leopard skin rug. On the dresser behind him is a violin, bow, book, jug, landscape painting and rifle.
Stock: 19366

212. **[Whippet or Italian Greyhound.]**

[Anon., n.d., c.1845.]

Fine lithograph with original hand colour, heightened in white. Sheet 210 x 220mm. 8¼ x 8¾". Sheet trimmed; corners clipped. £180

A delightful head study of an Italian Greyhound or a Whippet, the smallest of the sighthounds; a detail copied from a larger composition.

Stock: 19454



213. **[Limiers.]**

O De. Penne [Facsimile signature.] [Goupil & Co., c.1880.]

Colour photolitho with hand finishing. 570 x 410mm. £480

Hunting Dogs at Rest, with title as above on publisher's label on reverse. A pair of bloodhounds and pair of foxhounds, with a huntsman's jacket and horn hanging from a tree.. Early proof from Goupil's own stock.

Stock: 1667

214. **[Lurchers.]**

Henry Wilkinson. [signed in pencil.]

Etching. Plate: 240 x 345mm (9½ x 13½"). Edition: 22/250. £230

An etching by artist Henry Wilkinson (1921-2011) who specialised in sporting dogs and scenes.

Stock: 47927

215. **[Lurcher?]**

Henry Wilkinson.

Etching signed by the artist. 125 x 115mm (5 x 4½"). Limited edition: 11/150. £130

An etching by artist Henry Wilkinson (1921-2011) who specialised in sporting dogs and scenes.

Stock: 47898

216. **Lurcher and Rabbit.**

Richard Ansdell. H.T.Ryall. London. Published May 1, 1855, by Lloyd Brothers & Co., Ludgate Hill.

Mixed method engraving. 370 x 270mm. £220
Stock: 423

217. **[Otterhounds.]**

Henry Wilkinson.

Etching signed by the artist. 240 x 350mm (9½ x 13¾"). Limited edition: 15/250. £170

An etching by artist Henry Wilkinson (1921-2011) who specialised in sporting dogs and scenes.

Stock: 47916

218. **[Otterhounds and Border Terriers.]**

G.Vernon Stokes. [signed in pencil.] [n.d. c.1930.]

Coloured etching, 240 x 295mm (9½ x 11½"). Edition: 53/75. Framed. Unexamined out of frame. £280

Otterhound and Border Terriers on a river. By animal artist George Vernon Stokes (1873-1954).

Stock: 59748

219. **[July - Near the Holt]**

Maud Earl. Photographische Gesellschaft - Berlin Photographic Company Berlin, London W, 133 New Bond Street; New York, 14 East 23rd Street. Copyright 1906

Photogravure, 215 x 350mm £280

Three Otterhounds. July - From the Sportsman Calendar by Maud Alice Earl (1864-1943).

Stock: 2266

220. **[Salukis.]**

Henry Wilkinson.

Coloured etching signed by the artist. 250 x 300mm (9¾ x 11¾"). Limited edition: 15/200. £220

An etching by artist Henry Wilkinson (1921-2011) who specialised in sporting dogs and scenes.

Stock: 47910

221. **[Salukis.]**

Henry Wilkinson. [signed in pencil.]

Coloured etching signed by the artist. 245 x 345mm (9¾ x 13½"), with very large margins. Limited edition: 27/250. Mint. £220

An etching by artist Henry Wilkinson (1921-2011) who specialised in sporting dogs and scenes.

Stock: 59718

222. **[Weimaraner.]**

Henry Wilkinson.

Etching signed by the artist. 240 x 345mm (9½ x 13½"). Limited edition: 38/250. £230

An etching by artist Henry Wilkinson (1921-2011) who specialised in sporting dogs and scenes.

Stock: 47929

223. **[Whippets.]**

Henry Wilkinson.

Etching signed by the artist. 240 x 300mm (9½ x 11¾"). Limited edition: 63/200. £170

An etching by artist Henry Wilkinson (1921-2011) who specialised in sporting dogs and scenes. *See Ref: 9686*
Stock: 47904

224. **[Whippets]**

Henry Wilkinson.

Coloured etching signed by the artist. 241 x 297mm (9½" x 11¾"). Limited edition: 65/200. £170

An etching by artist Henry Wilkinson (1921-2011) who specialised in sporting dogs and scenes. *See Ref: 47904*

Stock: 9686

225. **[Wolfhounds.]**

Henry Wilkinson.

Etching signed by the artist. 245 x 345mm (9¾ x 13½"). Limited edition: 31/250. £170

An etching by artist Henry Wilkinson (1921-2011) who specialised in sporting dogs and scenes.

Stock: 47905



226. **[Bucks Staghounds] The Favourites.**

[Painted by] J. Hanson Walker Jun.r [Engraved by] E. Gilbert Hester. Copyright in the year 1902, in the United States of America, by I.P. Mendoza Ltd. London. London, Published in the year 1902, by I.P. Mendoza, Ltd, Printsellers and Publishers to the late Queen Victoria, St. James's Gallery, 4A. King Street, St. James's, S.W. Copyright Registered, Printed by McQueen Brothers.

Indian laid proof - open letters. A fantastic image. 595 x 691mm. 23½ x 27¼". £650

John Hanson Walker, Jnr. (exh. 1900-1925).

Stock: 17798

227. **[Newfoundland.] Keeper, A Good Dog In Old Times. From the Original Picture painted by Sir Edwin Landseer, R.A. at the age of Nineteen.**

Engraved by W.T. Davey. London, Published Sept.r 15, 1853 by Thomas Boys, Printseller to the Royal Family, 467 Oxford Street.

Mezzotint on india. 450 x 620mm, 17¾ x 24½". Some spotting. £550

A Newfoundland, resting on a mail bag. In the background are the coach and horses.

Stock: 3687



228. **[Let Sleeping Dogs Lie]**

HD 1930. Copyright 1930 by Frost & Reed Ltd. (of Bristol, England) in the United States of America.

Rare etching signed by the artist in pencil. Frost & Reed blindstamp, one of the smaller limited editions 33/150, very large margins. Frame dimensions 275 x 445mm (11¾ x 16"). Unexamined out of frame. £950

Two airedale puppies blissfully asleep. Herbert Thomas Dicksee (1862-1942) was an English painter who specialised in paintings of dogs and animals. He studied at the Slade School of Art and his first painting was exhibited in 1881. His paintings were usually done from life; he kept numerous dogs as pets and frequented London Zoo. His daughter, Dorothy was the executor of his will, which directed her to destroy most of the plates for his etchings.

Stock: 56064

229. **[Airedale Terriers]**

Henry Wilkinson.

Coloured etching signed by the artist. 241 x 342mm (9½" x 13½"). Limited edition: 68/250. £170

An etching by artist Henry Wilkinson (1921-2011) who specialised in sporting dogs and scenes.

Stock: 9702

230. **The Hill Top [pencil]**

Lucy Dawson [pencil] [n.d. c. 1930]

Etching. 240 x 275mm (9½ x 10¾") £360

Two Airedale Terriers.

Stock: 1598

231. **[Pair of Airedale Terriers.]**

Arthur Wardle [Pencil signature] Published by F.Mansell, 1 Orlestone Road, Holloway, London N, 1904.

Photogravure. Printed area 385 x 505mm (15¼ x 20"). £520

Stock: 6470

232. **Irish Stew - Lick! Licking!! Lick'd!!!**

Painted by Stanley Berkley. Etched by W. Heydemann. London. Published Decr. 1st 1886 by Sidney Redrup, 175 New Bond Street.

Etching. 154 x 400mm. £450

A terrier attacking a saucepan.

Stock: 635

233. **When We Were Pups Together.**
Painted by Stanley Berkley. London Published Febr.
25th 1886 by Sidney Redrip, 175 Bond Street W.
Sepia photogravure. Four images on one sheet, total
printed area 460 x 460mm. Small stain on publisher's
line. £320
The adventures of two young terriers.
Stock: 636

234. **A Bone of Contention. "Chu Chunky of
Notts" "Comedian of Notts". The property of
Her Grace The Duchess of Newcastle.**
Kate Beard 1915 [signed and dated in plate.] Published
by Art Engraving Department, Spratt's Patent Limited
London, E.C.3 1924.
Large photogravure on india paper, 375 x 460mm. 14¾
x 18". A fine impression with wide margins. Mint.
£360

Two wire haired fox terriers facing each other inside a
kennel, a joint of meat on the floor between them.
Stock: 23449

235. **A Bone of Contention. "Chu Chunky of
Notts" "Comedian of Notts". The property of
Her Grace The Duchess of Newcastle.**
Kate Beard 1915 [signed and dated in plate.] Published
by Art Engraving Department, Spratt's Patent Limited
London, E.C.3 1924.

Large photogravure on india paper with some colour
added by hand, 375 x 460mm. 14¾ x 18". A fine
impression with wide margins. Mint. £350
Two wire haired fox terriers facing each other inside a
kennel, a joint of meat on the floor between them.
Stock: 23439

236. **[Border Terriers.]**
Henry Wilkinson.
Etching signed by the artist. 235 x 275mm (9¼ x
10¾"). Limited edition 53/250. £220
An etching by artist Henry Wilkinson (1921-2011)
who specialised in sporting dogs and scenes.
Stock: 47895

237. **[Bull Terriers.]**
Henry Wilkinson.
Coloured etching signed by the artist. 250 x 300mm
(9¾ x 11¾"), with very large margins. Limited edition:
76/250. Mint. £220
An etching by artist Henry Wilkinson (1921-2011)
who specialised in sporting dogs and scenes.
Stock: 59717

238. **[Studies of Staffordshire Bull Terriers.]**
[Etched by Paul Renouard.] [n.d., 1907.]
Etching. 280 x 225mm, 11 x 8¾". £230
Charles Paul Renouard (1845-1924). While at the
Ecole des Beaux-Arts in 1875 he and his instructor
were hired to decorate the ceiling of the Paris opera
house, which was the inspiration for his most well-
known series of etchings, Le Nouvel Opéra. He came
to London in the 1890s and started work for the
'Graphic' newspaper, sketching theater-goers and
performers at the Theater Royal in Drury Lane, and

policemen and defendants at one of London's many
police courts.
Stock: 9079

239. **Crib and Rosa. The Property of Harry
Verelst Esq.r to whom this Plate is respectfully
inscribed by his Ob.t Serv.ts Abra.m Cooper &
John Scott.**

Painted by Abra.m Cooper. Engraved by John Scott.
Printed by W.m Bishop. London, Published June 7,
1817 by Abra.m Cooper 6 New Millman Street
Foundling Hospital and John Scott Rosomon Street
Spa Fields.
Engraving. 365 x 405mm (14½ x 16"), with large
margins. £320
Two bull terriers, Crib and his mother Rosa, in a yard.
Stock: 46258

240. **[Cairn Terriers.]**
Henry Wilkinson.
Etching signed by the artist. 240 x 295mm (9½ x
11¾"). Limited edition: 124/150. £220
An etching by artist Henry Wilkinson (1921-2011)
who specialised in sporting dogs and scenes.
Stock: 47913



241. **[Wasp.]**
Rosa Bonheur 1856 [signed and dated in plate.]
London Published 17th April 1900, by L.H. Lefevre &
Son, 1a King Street St. James's S.W.
Mixed method engraving on india paper, artist's proof
from an edition limited to 100, very large margins. 625
x 450mm. 24½ x 17¾". £380
Charming portrait of a Cairn terrier in a landscape,
after Rosa Bonheur (1822 - 1899).
Stock: 23440



242. [Cairn Terriers.] [Hope.]

Herbert Dicksee [pencil signature.] Published at 10 Clare Street, Bristol, By Frost & Reed Ltd. of Bristol, & London, 1929. Copyright. Copyright 1929 by Frost & Reed Ltd. (of Bristol, England) in the United States of America.

Etching, signed by the artist. 290 x 420mm (11½ x 16½"). Framed, with printed title label pasted on backboard. Unexamined out of original frame. £1450
The image shows the black terrier laid down with the white terrier sat in front of him. The label reads: "Hope" (Cairn Terriers). A New Original Etching by Herbert Dicksee R.E.!

Herbert Dicksee and his family owned a variety of different breeds of dogs which enabled him to paint them from life, such as "Hope". The Cairn is one of the native Scottish Breeds and from the 17th century had been used in the Western Highlands and the Isle of Skye to keep down vermin which were a threat to game. They often worked in small packs and they take their name from the Cairn - small outcrop of stones, common in the highland moors.

Stock: 57225

243. "Champion Breda Mixer"

[Anon] Published by F.Mansell at 1 Orlestone Road, Holloway, London N. the 15th June 1896. Copyright registered.

Photogravure on india laid paper, 365 x 420mm. 14¼ x 16½". £360

Fine portrait of an Irish terrier in the style of Arthur Wardle.

Stock: 23450

244. The Chase. To Thomas Griffith Esq:r, this Engraving from the Original Picture in the Collection, Is most respectfully dedicated by his very Obliged Servant Charles Hancock.

Painted by C. Hancock. Engraved by W. Giller. London, Published Nov.r 1. 1837, by Hodgson & Graves Printsellers by Special appointment to Her Majesty, 6 Pall Mall.

Mezzotint. Sheet size: 470 x 340mm (18¼ x 13¼").

Trimmed inside plate. £260

A dramatic scene with a black dog falling over the edge of a cliff, while chasing a rabbit lying dead below, as two other dogs watch from above.

After sporting and animal painter Charles Hancock (1802 - 1877). *Ex collection of Hon. Christopher Lennox-Boyd.*

Stock: 39065

245. Refaits.

P. Cottin Del. E.Pirodon lith. Imp. Lemerancier & Co. Paris. Publie par Goupil & Compie. le !st Octobre 1874. Paris, London, La Haye, Berlin.

Lithograph. Printed area 330 x 525mm. £320

A pair of rough terriers.

Stock: 1402

246. [Dandie Dinmont and his Terriers.]

Gourlay Steel R.S.A. Delt. James Stephenson Sculpt. Engraving. 330 x 435mm. £260

A fictional scene from Sir Walter Scott's novel, Guy Mannering. This character, Dandie Dinmont, is thought to be partly based on James Davidson, who is credited as the originator of the modern Dandie Dinmont terrier breed.

Stock: 5712

247. Champion Dandies "Blacket House Yet" and "Ancrum Fanny".

Arthur Wardle 1897 [signed and dated in plate.]

Published by Art Engraving Department, Spratts Patent Limited, London E.C.3. 1924.

Photogravure on india laid paper, 445 x 525mm. 17½ x 20¾". A good impression with full margins. Slight Printer's crease on left. £420

Two Dandie Dinmont terriers. The breed is named after Dandie Dinmont, a jovial farmer in Sir Walter Scott's novel Guy Mannering.

Arthur Wardle (British, 1864 -1949) was a prolific and very talented late nineteenth century artist who created an extraordinary body of work, yet surprisingly little has been written about him. Known by some as a painter of big game and wildlife, he is for dog lovers one of the pre-eminent painters of pure bred dogs that England has produced.

Stock: 23448

248. A Danish Terrier - From the original Picture in the possession of T. Lister Parker Esq:r.

Painted by J. Northcote Engraved by Will. Say London. Published Novr. 22 1804, by the Engraver, 92 Norton Street, Marylebone.

Mezzotint 275 x 380mm £480

Stock: 4432

249. [Jack Russell] Excelsior!

Painted by W.m Strutt. Etched by A.W. Strutt.

London, Published Nov.r 1st 1887 by I.P. Mendoza, St James's Gallery, King St, St James's _ Copyright registered.

Etching. 525 x 345mm (20¾ x 13½"), with very large margins. £380

One Jack Russell terrier puppy wins the race up three steps.

William Strutt (1825-1915), son of William Thomas Strutt, travelled to Australia and tried his hand in the

Ballarat gold fields. Failing to make his fortune he returned to painting. He travelled to New Zealand 1855-6, and recorded the preparations of the Burke and Wills exploration expedition in 1860-61. He left Australia in 1862, not wanting to bring his children up in such a godless society. Back in England he turned his sketches into full paintings: in 2015 his "View of Mt Egmont from New Plymouth, with Maoris driving off settlers' cattle" was purchased by the Museum of New Zealand for NZ\$1.5 million, becoming the only significant oil painting from the 1850s or 1860s in their collection.

The engraver of this plate, Alfred William Strutt, was his son, born in Taranaki, New Zealand in 1856.

Stock: 47813

250. **[March - Nipped in the Bud.]**

Maud Earl. Copyright 1906. Published by the Berlin Photographic Company Berlin - London W. 133 New Bond Street.

Colour photogravure, ltd edition of 100, signed by the Artist. 220 x 350mm. £350

Wire-haired Fox Terriers by Maud Alice Earl (1864-1943).

Stock: 2289

251. **[Ready.]**

HD. 1928. Herbert Dicksee [pencil signature.]. Printed at 10 Clare Street, Bristol, by Frost & Reed Ltd. of Bristol & London 1928. Copyright. Copyright 1928 by Frost & Reed Ltd. (of Bristol, England) in the United States of America.

Proof etching, signed by the artist. edition of 325. 335 x 540mm (13¼ x 21¼"), with publisher's blindstamp. Framed. Unexamined out of frame. Mint. £950

Alert wire-haired fox terrier lying with ball by front paws. *From the celebrated collection of Bryan & Valerie Steele.*

Stock: 52106

252. **[March - Nipped in the Bud.]**

Maud Earl. Copyright 1906. Published by the Berlin Photographic Company Berlin - London W. 133 New Bond Street.

Colour photogravure, ltd edition of 100, signed by the Artist. 220 x 350mm. £280

Wire-haired Fox Terriers by Maud Alice Earl (1864-1943)

Stock: 7452

253. **[Fox Terrier held at bay by a cat.]**

J. Yates Carrington. London Published October 1st 1886. by J. Wallace 138 Fenchurch Street.

Etching on chine collé. 230 x 355mm (9 x 13¾"), with remarque of a palette containing the artist's pencil signature, very large margins. £320

James Yates Carrington (1857-1892).

Stock: 47930

254. **[Terrier and Ferrets.]**

TB [Thomas Blinks]. Published 1st June 1889, by Arthur Rayner, 26, Francis St Tottenham Court Road, London. Copyright reserved.

Etching on chine collé. 600 x 460mm (23½ x 18") very large margins. £260

A fox terrier standing in front of a pair of caged ferrets.

Stock: 57264



255. **[Fox Terrier] Locked out.**

Painted by J. Yates Carrington, Engraved by Alfred S. Handford Published by the South Kensington Fine Art Association, 8 Exhibition Road South Kensington, London SW.

Mezzotint, 430 x 580mm, Image. tear in top margin, right corner of margin missing. £350

Fox terrier and pups.

Stock: 1177

256. **[A fox terrier.]**

Arthur Wardle 1903 [in image lower left, pencil signature lower right.] Published by F.Mansell at 1, Orleston Road, Holloway, London, N. the 12th January 1904. Copyright registered.

Photogravure on india laid paper, 345 x 450mm (13½ x 17¾"). One worm hole near signature lower left. £320

Fox terrier.

Stock: 13373

257. **Champion Sandown Violet.**

Arthur Wardle 1902 [signed and dated in plate.] Published by Art Engraving Department, Spratt's Patent Limited, London, E.C.3 1924.

Photogravure on india paper, 350 x 455mm. 13¾ x 18". A fine impression with wide margins. Mint. £360

Fine portrait of a fox terrier in a landscape.

Arthur Wardle (British, 1864 -1949)

Stock: 23442

258. **[A Hot Scent - Jack Russell terriers]**

Henry Wilkinson.

Coloured etching signed by the artist. 235 x 342mm (9¼" x 13½"). Limited edition: 113/250. £230

A pair of Jack Russell terriers. An etching by artist Henry Wilkinson (1921-2011) who specialised in sporting dogs and scenes.

Stock: 9690

259. **A Find! [&] A Find Indeed! The Biter Bit! [&] The Blue Bag.**

Painted by Stanley Berkley. [to first plate, signed in first and third plates.] [n.d., c.1890.]

A series of three mixed-method prints, each image 125 x 305mm. 5 x 12". Margins roughly trimmed; scratch to surface of third plate. £420

Charming triptych following the exploits of two fox terrier puppies who discover and dig up a wasp's nest and end up looking decidedly sorry for themselves, nursing stung and swollen muzzles.

Stanley Berkeley (1855 - 1909) was a London etcher, animal, sporting and historical painter who exhibited paintings at the RA from 1881 to 1902, and was member of the RPE.

Stock: 19452

260. **Going! Going! [&] Gone!!!**

Stanley Berkley [etched in plate and signed in pencil lower left.] W. Heydermann [signed in pencil lower right.] London Published September 20th. 1886 by Sidney Redrup, the Proprietor, 175, New Bond St. w. New York Fishel Adler & Schwartz.

Pair of etchings, signed remarqued proofs, each 310 x 445mm. 12¼ x 17½". Repaired tear through sheet along lower platemark, 1st plate. £420

Three terriers engaged in a tug-of-war over a plucked chicken, which in the second plate splits sending the dogs flying backwards in different directions. A chained bulldog watches on with amusement to the right.

With remarques of an auctioneer on the rostrum at a sale lower right.

Stanley Berkeley (1855 - 1909) was a London etcher, animal, sporting and historical painter who exhibited paintings at the RA from 1881 to 1902, and was member of the RPE.

Stock: 9490

261. **[Irish Terrier head.]**

Alice Banwell [Pencil signature.] [n.d, c.1930.]

Etching, signed by the artist. 150 x 110mm (6 x 4¼"), with blindstamp 'Rembrandt Guild Artist's Proof', very large margins. £140

Stock: 60114

262. **[Islay Begging.]**

Engraved by Thomas Landseer, A.R.A., in his 78.th Year. [EL: artist's monogram.] London Published Dec.r 19.th 1874 by Henry Graves & Co, the Proprietors Publishers to H.M. the Queen &, T.R.H. The Prince & Princess of Wales, 6 Pall Mall, Copyright Registered. [Published by Henry Graves & Co. Printsellers and Publishers to Her Majesty the Queen and T.R.H. The



Prince and Princess of Wales, Pall Mall, London. Sold by D. Woodcock & Co., 17, Farringdon Street, London.]

Mixed method engraving, proof before letters on india. Printseller's Association Stamp. Artist Proof Edition, Limited to One Hundred Copies. Plate 502 x 381mm. 19¾ x 15". Uncut, mint. £420

Islay begging; a full-face portrait of Her Majesty's favourite terrier. The picture belongs to Her Majesty the Queen and hangs at Osborne.

From "Her Majesty's Pets being a Collection of Twenty Steel-Place Engravings from Paintings by Sir Edwin Landseer, R.A. By Special Permission of, and Dedicated to Her Most Gracious Majesty the Queen". *Ex Collection of Hon. Christopher Lennox-Boyd.*

Stock: 23020

263. **[Jack Russell & Rat.]**

Henry Wilkinson.

Etching signed by the artist. 105 x 95mm (4 x 3¾"), with very large margins. Limited edition: 200/250. Mint. £120

An etching by artist Henry Wilkinson (1921-2011) who specialised in sporting dogs and scenes.

Stock: 59653

264. **[Jack Russell.]**

B. Howitt-Lodge/[19]22 [signed and dated in image.] Copyright. John Bale, Sons & Danielsson Ltd. London. [c.1925.]

Colour photolithograph, image 260 x 210mm. 10¼ x 8¼". £140

A Jack Russell terrier appears at an open window, imploring the viewer to play with the ball it has deposited on the window-sill.

Stock: 15271

265. **[Jack Russell]**

Signed Carsberg?. n.d. c. 1930

Etching 200 x 260mm.

£110

Stock: 1192

266. **[Jack Russell.]**

Henry Wilkinson.

Coloured etching signed by the artist. 180 x 220mm (7 x 8¾"), with very large margins. Limited edition: 71/250. Mint. £160

An etching by artist Henry Wilkinson (1921-2011) who specialised in sporting dogs and scenes.

Stock: 59654

267. **[Jack Russell Terriers.]**

Henry Wilkinson.

Coloured etching signed by the artist. 235 x 345mm (9¼ x 13½"), with very large margins. Limited edition: 115/250. Mint. £220

An etching by artist Henry Wilkinson (1921-2011) who specialised in sporting dogs and scenes.

Stock: 59656



268. **[Lakeland Terriers.]**

Henry Wilkinson.

Coloured etching signed by the artist. 250 x 340mm (9¾ x 13¼"), with very large margins. Limited edition: 50/200. Mint. £220

An etching by artist Henry Wilkinson (1921-2011) who specialised in sporting dogs and scenes.

Stock: 59660

269. **[Mr. Brown Left Luggage]**

A.H. Phillips, signed in Pencil London Published Sept. 3rd 1900 by I.P. Mendoza Limited Printsellers and Publishers to H. M. the Queen, St. James's Gallery, 4 King Street, St. James's, Copyright Registered

Mixed method engraving 300 x 425mm. £340

Two sad Scottie dogs with a luggage tag.

Stock: 4636

270. **[Norwich Terriers.]**

Henry Wilkinson.

Coloured etching signed by the artist. 245 x 300mm (9¾ x 11¾"), with very large margins. Limited edition: 31/250. Mint. £220

An etching by artist Henry Wilkinson (1921-2011) who specialised in sporting dogs and scenes.

Stock: 59658



271. **Paddy.**

Painted by Frank Paton. Engraved by J.B.Pratt. Printed by A.Holdgate. London. Published June 1st 1898, by Leggatt Brothers, 62 Cheapside E.C.

Mixed-method engraving. 550 x 440mm. Slight spotting in print area. £450

An Irish Terrier.

Stock: 4572

272. **Rodney. The Property of J.T. Fenton, Esqre.**

Etched by R. Roe, from a Drawing by B.E. Duppa, Esqre. [n.d., c.1850.]

Etching, 250 x 305mm. 9¾ x 12". Full margins, but one side creased. £190

Inscribed 'Proof' lower right. After portrait painter Bryan Edward Duppa (1804 - 1866). *Provenance: Pemberton family of Trumpington Hall.*

Stock: 13029

273. **[Rough Coated Terriers.]**

Henry Wilkinson.

Coloured etching signed by the artist. 240 x 300mm (9½ x 11¾"), with very large margins. Limited edition: 10/250. Mint. £250

An etching by artist Henry Wilkinson (1921-2011) who specialised in sporting dogs and scenes.

Stock: 59661

274. **[Sandy and Jock.]**

Meta Pluckebaum [pencil signature.] [n.d. c.1920.] Coloured etching, signed in pencil; framed. Visible area. 235 x 266mm. 9¼ x 10½". £280

Two Scottie Terrier puppies; Sandy and Jock.

Meta Pluckebaum (1876-1954) was a German painter. She was popular in Europe for her work in children's portraits, still life and animals, especially cats and dogs. She was highly successful in the United States for her humorous and sensitive etchings of cats and dogs.

Stock: 24319

275. **[Scottie]**

David Gee, [Pencil Signature] [n.d., c.1950]
Signed etching. 125 x 125mm. £50
Stock: 2667

276. **[Scottish Terrier]**

Henry Rayner. [signed in pencil below image.] [n.d.,
c.1939]
Drypoint etching. Plate: 145 x 185mm (5¾ x 7¼").
£220

A portrait of a Scottish Terrier by Australian artist
Henry Rayner (1902-1957).
Stock: 40925

277. **[Scottie & West Highland Terrier.]**

Neumann [? - pencil signature] [n.d., c.1930.]
Coloured etching, with publisher's blindstamp. £320
Stock: 4397

278. **[Scottie & Jay]**

Henry Wilkinson.
Etching signed by the artist. 240 x 345mm (9½ x
13½"). Limited edition: 84/250. £170
An etching by artist Henry Wilkinson (1921-2011)
who specialised in sporting dogs and scenes.
Stock: 47923



279. **[Who Goes There.]**

Herbert Dickee [pencil signature.] Published at 8, Clare
St. Bristol, by Frost & Reed, Printsellers of Bristol,
Lonon 1st March 1916. Copyright. Copyright 1916 by
Frost & Reed Ltd (of Bristol, England) in the United
States of America.
Scarce etching on vellum, limited edition of 325 signed
by the artist. 425 x 410mm (16¾ x 16"), with very
large margins, Printsellers' Association blindstamp.
Mint. Slight rippling at top in margins. £980
A round portrait of a Scottish terrier. *From the
celebrated collection of Bryan & Valerie Steele.*
Stock: 52087

280. **[A Scottish Terrier Family Group.]**

J. Hanson Walker J.nr [pencil signature.] J. Hanson
Walker J.nr 1904. Copyright 1905 by Photographische
Gesellschaft. Published by the Berlin Photographische
Company, Berlin [with their stamp]; London, W.1. 33,
New Bond Street. New York 14 East 23rd Street.
Rare photogravure. Plate 273 x 298mm. 10¾ x 11¼".
Minor crease on india paper lower right not effecting
printed area. £260
A family of Scottish terriers; two adults and five
puppies.
Stock: 21543

281. **[That Sounds Like the Missus.] 7/150.**

Cecil Aldin [pencil signature]. [n.d., c.1920.]
Etching, limited edition 150 signed by the artist. 295 x
210mm (11½ x 8¼"), very large margins. Framed with
original label on reverse of frame, limited to 150.
Unexamined out of frame. £950
A Scottish Terrier in an armchair, alert at it's owner's
return.
Stock: 52112

282. **[On Guard.]**

George Soper [signed in pencil]. [n.d., 1927].
Etching. 150 x 200mm (6 x 8"). £640
This etching of two scottish terrier breed dogs
watching over their masters golf clubs, has also been
seen with the title 'Black and White', suggesting a West
Highland and Scottie, possible a Sealyham.
George Soper, RE (1870-1942), became an expert
printmaker and gained most recognition during his
lifetime as an etcher, and later as a wood engraver.
Over three decades he produced more than five
hundred prints. Both the British Museum and the
Victoria and Albert Museum, London, include
examples of his etchings in their collections.
Stock: 7165

283. **[Jungle Stories]**

Arthur Wardle. Stanley C. Pratt [pencil signatures]
[I.P. Mendoza, 1907]
Mezzotint. 460 x 630mm (18 x 24¾"). With
Printseller's Association blindstamp. £550
Boy reading on a tiger skin watched by two Scotties.
Stock: 6474

284. **Three Loyal Scots.**

Lillian Cheviot [signed in plate.] C.W. Faulkner & Co.
London E.C. [n.d., c.1915.] £260
Photogravure, 275 x 495mm. 10¾ x 19½".
Three Scottish terriers.
Lillian Cheviot (British, fl.1894 - 1920) studied at
Calderon's School of Animal Painting and Walter
Donne's Life School. She had many distinguished
patrons and produced many illustrations for The
Graphic magazine as well as other magazines. She
exhibited at the Royal Academy from 1895-1899.
Stock: 12929

285. **[Scottish terrier with beret.]**

Lillian Cheviot [signed in pencil and in plate.]
Copyright - Published May 20th, 1916, by Arthur
Ackermann & Son Ltd., 157a, New Bond St, London,
W.
Photogravure, image 375 x 455mm. 14¾ x 18". Crease
to upper left corner. £350

A Scottish terriers sitting on a cobbled stone floor,
leaning against a wall.

Lillian Cheviot (British, fl.1894 - 1920) studied at
Calderon's School of Animal Painting and Walter
Donne's Life School. She had many distinguished
patrons and produced many illustrations for The
Graphic magazine as well as other magazines. She
exhibited at the Royal Academy from 1895-1899.
Stock: 19413

286. **[Portrait of a Sealyham Terrier]**

Cecil Aldin [signed in pencil] [n.d. c.1930]
Etching, with pencil signature; numbered edition
22/150. Plate size: 205 x 160mm. 8 x 6.5".
Unexamined out of frame. £690

A standing Sealyham Terrier puppy. The Sealyham
Terrier is a rare Welsh breed of small to medium-sized
terrier that originated in Wales as a working dog. It is
principally a white-bodied, rough coated breed,
developed in the mid to late 18th century by Captain
John Edwardes at Sealyham House, Pembrokeshire.
Stock: 27998



287. **[Cairnach.]**

[Engraved by Charles Mottram, 1875.] [Inside plate:
EL 1841.] [EL: artist's monogram.] London Published
March 22.nd 1875 by Henry Graves & Co, the
Proprietors Publishers to H.M. the Queen &, T.R.H.
The Prince & Princess of Wales, 6 Pall Mall,
Copyright Registered. [Published by Henry Graves &
Co. Printsellers and Publishers to Her Majesty the
Queen and T.R.H. The Prince and Princess of Wales,
Pall Mall, London. Sold by D. Woodcock & Co., 17,
Farringdon Street, London.]
Mixed method engraving, proof before letters on india.
Printseller's Association Stamp. Artist Proof Edition,
Limited to One Hundred Copies. Plate 439 x 534mm.
17¼ x 21". Uncut, foxing off image. £520

A portrait of a Skye terrier, the original crayon drawing
belongs to Her Majesty the Queen, and hangs at
Windsor.

From "Her Majesty's Pets being a Collection of Twenty
Steel-Place Engravings from Paintings by Sir Edwin
Landseer, R.A. By Special Permission of, and
Dedicated to Her Most Gracious Majesty the Queen".
Ex Collection of The Hon Christopher Lennox-Boyd.
Stock: 23018

288. **Skye Terrier.**

Painted by A. Cooper R.A. Drawn on Stone by
Thomas Fairland. [London: B.B.King, c.1835. Printed
by Graf & Soret.]

Hand coloured lithograph with gum arabic, sheet 280 x
225mm. 11 x 8¾". Sheet trimmed. £220
Fine colour. Published for a series of dog heads.
Stock: 11633

289. **[Skye Terrier] [Dear Old Boz.]**

[Engraved by Charles Mottram, 1875.] [EL: artist's
monogram.] London Published Oct.r 28.th 1875 by
Henry Graves & Co, the Proprietors Publishers to H.M.
the Queen &, T.R.H. The Prince & Princess of Wales,
6 Pall Mall, Copyright Registered. [Published by
Henry Graves & Co. Printsellers and Publishers to Her
Majesty the Queen and T.R.H. The Prince and Princess
of Wales, Pall Mall, London. Sold by D. Woodcock &
Co., 17, Farringdon Street, London.]
Mixed method engraving, proof before letters on india.
Printseller's Association Stamp. Artist Proof Edition,
Limited to One Hundred Copies. Plate 450 x 527mm.
17¾ x 20¾". Uncut, mint. £550

'Boz', Queen Victoria's skye terrier, with a rabbit.
Boz was named after Charles Dickens' early
pseudonym. He was purchased by Victoria a present
for her mother, the Duchess of Kent, in 1857, but
joined the Royal household when the Duchess died in
1861. The original painting was exhibited at the British
Institution in 1865 and now hangs at Osborne House,
the Royal Residence on the Isle of Wight.
From "Her Majesty's Pets being a Collection of Twenty
Steel-Place Engravings from Paintings by Sir Edwin
Landseer, R.A. By Special Permission of, and
Dedicated to Her Most Gracious Majesty the Queen".
Ex. Collection of Hon Christopher Lennox-Boyd.
Stock: 23037

290. **[Dandie Dinmont and the Hedgehog.]**

[Engraved by Charles Mottram, 1874.] [EL: artist's
monogram.] London Published Nov.r 5.th 1874 by
Henry Graves & Co, the Proprietors Publishers to H.M.
the Queen &, T.R.H. The Prince & Princess of Wales,
6 Pall Mall, Copyright Registered. [Published by
Henry Graves & Co. Printsellers and Publishers to Her
Majesty the Queen and T.R.H. The Prince and Princess
of Wales, Pall Mall, London. Sold by D. Woodcock &
Co., 17, Farringdon Street, London.]
Mixed method engraving, proof before letters on india.
Printseller's Association Stamp. Artist Proof Edition,
Limited to One Hundred Copies. Plate 444 x 533mm.
17½ x 21". Uncut, mint. £620

An old Skye terrier given to the Queen by H.R.H.
Prince Albert, on May 24.th 1842. The name Dandie
Dinmont came from a character in Sir Walter Scott's
'Guy Mannering', this name was later given to the
breed of dog now known as Dandie dinmonts.

The original picture belongs to Her Majesty the Queen, and hangs at Osborne. Exhibited at the Royal Academy in 1854.

From "Her Majesty's Pets being a Collection of Twenty Steel-Place Engravings from Paintings by Sir Edwin Landseer, R.A. By Special Permission of, and Dedicated to Her Most Gracious Majesty the Queen".
Ex Collection of Christopher Lennox-Boyd.
Stock: 23032

291. **[Cairnach.]**

[Engraved by Charles Mottram after Sir Edwin Landseer.] [London: Henry Graves & Son, 1875.] Engraving on india. 400 x 370mm, 16 x 14½". Artist's printed monogram & Printsellers' blindstamp. Margins soiled. £360

Circular portrait of the head of Cairnach, Queen Victoria's Skye Terrier, painted by Landseer on Prince Albert's commission. The original painting was given by Albert to Victoria as a Christmas present in 1842.
Graves: 304. PSA: BL: 25.
Stock: 18597



292. **[Cairnach.]**

[Engraved by Charles Mottram, 1875.] [EL: artist's monogram.] London Published July 9.th 1875 by Henry Graves & Co, the Proprietors Publishers to H.M. the Queen &, T.R.H. The Prince & Princess of Wales, 6 Pall Mall, Copyright Registered. [Published by Henry Graves & Co. Printsellers and Publishers to Her Majesty the Queen and T.R.H. The Prince and Princess of Wales, Pall Mall, London. Sold by D. Woodcock & Co., 17, Farringdon Street, London.] Mixed method engraving, proof before letters on india. Printseller's Association Stamp. Artist Proof Edition, Limited to One Hundred Copies. Plate 400 x 369mm. 15¾ x 14½". Uncut, mint. £550

A portrait of a Skye Terrier. From "Her Majesty's Pets being a Collection of Twenty Steel-Place Engravings from Paintings by Sir Edwin Landseer, R.A. By Special Permission of, and Dedicated to Her Most

Gracious Majesty the Queen". *Ex Collection of Hon. Christopher Lennox-Boyd.*
Stock: 23021

293. **[Staffordshire Bull Terriers.]**

Henry Wilkinson.
Coloured etching signed by the artist. 255 x 340mm (10 x 13¼"), with very large margins. Limited edition: 56/200. Mint. £250
An etching by artist Henry Wilkinson (1921-2011) who specialised in sporting dogs and scenes.
Stock: 59657

294. **Vixen. The Property of Daniel Maude, Esq.r**

B.E. Duppa, Esq.r Del.t R. Roe, fec.t [n.d. c1850.] Etching on india. 252 x 299mm (10 x 11¾"). £160
Head of a terrier wearing a collar, viewed in profile, looking to the right of the image.
After portrait painter Bryan Edward Duppa (1804-1866). *VAM: 23722:3.*
Stock: 29463

295. **There's No Place Like Home.**

Painted by Sir Edwin Landseer, R.A. Engraved by Alfred Lucas. London, Published Oct.r. 27th 1874, by G.P. McQueen, 37, Great Marlborough Street, Regent Street. Printed by McQueen.
Mixed-method engraving with colouring by hand, open-letter state. 510 x 590mm, 20 x 23¼". Large margins slightly tatty and grubby. £420
A small rough-haired terrier looks up plaintively, an empty bowl in front and kennel behind.
After Edwin Landseer (1802 - 1873). The publisher's colour sample.
Stock: 23443

296. **[The Prodigal.]**

HD 1926. [Signature outside image:] Herbert Dicksee. Published...Bristol by Frost & Reed Ltd of Bristol & London 1926 Copyright. Copyright 1926 by Frost & Reed Ltd (of Bristol, England) in the United States of America.
Etching, signed artist proof on vellum. 571 x 470mm (22½ x 18½"). Time stained outside platemark. £1200
A terrier sitting on a doorstep in front of a closed door.
Stock: 20270

297. **[Terrier and Ferrets.]**

[Thomas Blinks.] Published 1.st. June, 1889, by Arthur Rayner, 26. Francis S.t., Tottenham Court Road London. Copyright Reserved.
Etching with very large margins. On india. Plate: 460 x 610mm (18 x 24"). Some faint foxing. £260
A portrait of a terrier behind which several ferrets are kept in a cage.
Stock: 35755

298. **[Terrier Head.]**

Alice Banwell [Pencil signature.] [n.d. c.1930.] Coloured etching, signed by the artist. 250 x 190mm (9¾ x 7½"). £160
Stock: 506

299. **The Problem Play LXXXV. [in pencil.]**

Diana Thorne. [signed in pencil.] [n.d., c.1940.]
Etching. Plate: 185 x 230mm (7¼ x 9"), with very large
margins. Mount burn. £230
A scene showing three puppies watching a spinning
top.
Stock: 50628

300. **A Plan Of Campaign.**

W.H. Trood. 1887 [signed and dated in plate.] Painted
by W.H. Trood. Engraved by C.A. Alais. Published by
Frost & Reed, 12, Clare St. Bristol, October 18th.
1888.
Mixed method engraving in colour, on india laid paper,
sheet 520 x 410mm. 20½ x 16". Slight stain at top
right. £260
Various terriers surround a barrel, looking up at a crow
perched on top.
After William Henry Hamilton Trood (1860 - 1899).
Stock: 13298

301. **Terriers.**

H, Alken del.t. I.Clark sculp.t. London, Published by
T.McLean, Jan.y. 1.1820.
Coloured aquatint. 270 x 380mm. Small mark in sky.
£240
Seven assorted terriers.
Stock: 67

302. **Three of us.**

From a drawing by E.A. Drage. [Signed in plate lower
left.] [n.d., c.1900.]
Photogravure, 320 x 450mm. 12½ x 17¾". £220
Three terriers, including a Jack Russell (to right).
Stock: 13408



303. **[Scotty and Khaki.]**

Margaret Collyer [pencil signature.] Stanley C. Pratt
[pencil to right.] Published at 8, Clare Street, Bristol by
Frost & Reed. Printers of Bristol, Clifton and
London. May 1st 1906. Copyright 1906 in the United
States of America, by Frost & Reed, Bristol, England.
Rare etching on india, signed by artist and engraver.
Plate 509 x 635mm (20 x 25"). £420
A Westie and a Scottie sit on a rug, a ball lies in front.
Margaret Collyer (1872-1945) the British animal and
genre painter. *Ex Collection: The Late Honourable
Christopher Lennox-Boyd. PSA [Vol.II]: AP.300.*
Stock: 28707

304. **The First Lesson.**

[J. Bateman.] Berlin, F.Sala & Co. Unter d Linden 51.
Lithograph. 599 x 711mm. 23½ x 28". £280
A small dog in a barn demonstrates how to kill a rat to
three puppies, who sit watching intently on the right, in
front of the kennel, as the elder holds the rat under its
paw on the left. *Ex Norman Blackburn Collection.*
Stock: 18776

305. **Three Pets. The Property of James
Webb, Esqre. A Copy of the Pedigree of "Wee
Pet" given with each Copy.**

B. Aplin Howe, Pinxt. Lavars, Chromo-Lith, Bristol.
Entd. at Sta: Hall. Bristol. -Published by Oldland and
May, 1863.
Chromolithograph, sheet 560 x 385mm. 22 x 15¼".
£260
Sweet oval portrait of three pet dogs, two Scottish
terriers and a fox terrier.
Stock: 19427

306. **[Home Again.]**

H.D. Herbert Dicksee [pencil signature] 21/200. [n.d.,
c.1910.]
Rare etching, limited edition of 200 signed by the artist.
290 x 220mm (11½ x 8¾"). Framed. Unexamined out
of frame. Mint. £950
A West Highland Terrier seated outside a closed door.
*From the celebrated collection of Bryan & Valerie
Steele.*
Stock: 52093



307. **[West Highland Terrier.]**

HD 1930. Herbert Dicksee [pencil signature.]
Copyright 1930 by Frost & Reed Ltd (of Bristol,
England) in the United States of America.
Etching, 32/150 impressions signed by the artist. 225 x
300mm (8¾ x 11¾"). Framed. Unexamined out of
frame. £950
A seated Westie, looking up intently at something out
of the image. *From the celebrated collection of Bryan
& Valerie Steele.*
Stock: 52125

308. **[Westie.]**

Henry Wilkinson.

Etching signed by the artist. 165 x 222mm (6½" x 8¾"). Limited edition 4/150. £190

An etching by artist Henry Wilkinson (1921-2011) who specialised in sporting dogs and scenes.

Stock: 9711

309. **[Cavalier King Charles.]**

Henry Wilkinson.

Coloured etching signed by the artist. 235 x 305mm (9¼ x 12"), with very large margins. Limited edition: 107/250. Mint. £180

An etching by artist Henry Wilkinson (1921-2011) who specialised in sporting dogs and scenes.

Stock: 59655

310. **[Cavalier King Charles Spaniel] Rose.**

T.G. Wilson. [n.d., c.1850.]

Rare lithograph. Sheet 280 x 220mm (11 x 8¾"). A little creasing. £190

The head of a Cavalier King Charles spaniel, with a bow around its neck.

Stock: 56366



311. **[Dash.]**

[Engraved by Charles Mottram, 1875.] [EL: artist's monogram.] London Published Sept. 18th. 1875 by Henry Graves & Co, the Proprietors Publishers to H.M. the Queen &, T.R.H. The Prince & Princess of Wales, 6 Pall Mall. Copyright Registered. [Published by Henry Graves & Co. Printsellers and Publishers to Her Majesty the Queen and T.R.H. The Prince and Princess of Wales, Pall Mall, London. Sold by D. Woodcock & Co., 17, Farringdon Street, London.]

Mixed method engraving, proof before letters on india. Printseller's Association Stamp. Artist Proof Edition, Limited to One Hundred Copies. Plate 408 x 367mm. 16 x 14½". Tear in the margins, well off platemark, uncut, mint. £650

The Duchess of Kent's favourite spaniel. The original picture belongs to Her Majesty the Queen, and hangs at

Osborne. There is a monument in marble to this dog on Windsor Castle slopes, with appropriate inscription. From "Her Majesty's Pets being a Collection of Twenty Steel-Plate Engravings from Paintings by Sir Edwin Landseer, R.A. By Special Permission of, and Dedicated to Her Most Gracious Majesty the Queen". *Ex Collection of The Hon. Christopher Lennox-Boyd.* Stock: 23012

312. **[Liberti] [Chihuahua and Two Chow Chow Puppies.]**

Etching signed Efrehoff. Ltd. 23/380. n.d. c.1960. Paris.

Etching 270 x 210mm. £230

A proud Chihuahua sits facing forward while two Chow Chow puppies rest with their paws over a ledge.

Stock: 2320

313. **Epagneul D'angleterre...**

Scarce engraving. 200 x 175mm. Worn on the edges with a couple of tiny pin spots, some faint scratches.

£150

Anonymous French engraving of a Cavalier King Charles Spaniel sitting on a divan, with an engraved text praising its nature and excellent breeding.

Stock: 196

314. **Fairy. Landseer's Favourite Spaniel.**

[Edwin Landseer. Alfred Lucas.] [n.d., c.1849.]

Engraving. Very rare. Sheet size: 560 x 550mm (22 x 21½"). Slight damage. Creased. £380

The head of a spaniel in a circle looking to the right, behind a carved arm of a chair in the foreground. After the painting by Sir Edwin Henry Landseer (1802 - 1873). From the painting exhibited by Landseer at the Royal Academy 1835. The Cavalier was the property Lady Emily Elizabeth Bulwer-Lytton (1828-1848), daughter of Mrs Rosina Doyle Bulwer-Lytton, (1802 - 1882), the novelist, and Edward Lytton Bulwer (1803-1873), the author and poet of fantasies and fairy tales.

Ex collection of Hon. Christopher Lennox-Boyd.

Stock: 39066

315. **[Shaver, A French Bulldog Asleep.]**

H.D. Herbert Dicksee [pencil signature]. [n.d., c.1920.]

Etching, Restricted edition of 325 proofs, plate destroyed. 70 x 155mm (2¾ x 6"). Framed with publisher's title label on backboard. Slight discolouration at edges. Unexamined out of frame.

£1200

Herbert Thomas Dicksee (1862-1942) was an English painter who specialised in paintings of dogs and animals. He studied at the Slade School of Art and his first painting was exhibited in 1881. His paintings were usually done from life; he kept numerous dogs as pets and frequented London Zoo. His daughter, Dorothy was the executor of his will, which directed her to destroy most of the plates for his etchings. *From the celebrated collection of Bryan & Valerie Steele.*

Stock: 54839

316. **[Griffon]**

Signed Carsberg?. n.d. c. 1930

Etching 200 x 260mm.

£130

Stock: 1191

317. **Alfie [pencil]. [Griffon Bruxellois]**

H.Rayner. [n.d., c.1942]

Drypoint etching, printed in sanguine, signed in pencil.

180 x 140mm.

£220

Also known as 'The Sienna Dog'.

Rayner (1902-1957) worked in the Antipodes before studying at the Royal Academy. He was a friend of Sickert.

Stock: 10718

318. **The Sienna Dog [pencil]. [Griffon Bruxellois]**

H.Rayner. [n.d., c.1942.]

Drypoint etching, printed in brown, signed in pencil.

180 x 140mm.

£220

Also known as 'Alfie'.

Rayner (1902-1957) worked in the Antipodes before studying at the Royal Academy. He was a friend of Sickert.

Stock: 10719

319. **[Cavalier King Charles Spaniel.]**

[British, n.d., c.1845.]

Fine hand coloured lithograph with gum arabic, sheet 150 x 120mm. 6 x 4³/₄". Sheet trimmed, trace of vertical crease.

£140

An attractive Victorian dog portrait in vivid original colour.

Stock: 19441

320. **[A Bonnie Prince Charlie.]**

H.D. Herbert Dicksee [pencil signature] London

Published in the year 1902 by the Fine Art Society (Lon) 148 New Bond Street W.

Etching, proof on vellum, limited edition of 325 (plate destroyed), signed by the artist. 240 x 195mm (9¹/₂ x 7³/₄). Framed. Some spotting. Unexamined out of frame.

£790

Portrait of a King Charles Spaniel. *From the celebrated collection of Bryan & Valerie Steele.*

Stock: 52094

321. **[King Charles Spaniels.]**

Henry Wilkinson.

Coloured etching signed by the artist. 250 x 305mm (9³/₄ x 12"), with very large margins. Limited edition: 95/150. Mint.

£220

An etching by artist Henry Wilkinson (1921-2011) who specialised in sporting dogs and scenes.

Stock: 59662

322. **[Lion Dog from Malta.]**

[Engraved by Charles Mottram, 1876.] [EL: artist's monogram.] London Published June 20.th 1876 by Henry Graves & Co, the Proprietors Publishers to H.M. the Queen &, T.R.H. The Prince & Princess of Wales, 6 Pall Mall, Copyright Registered. [Published by Henry Graves & Co. Printsellers and Publishers to Her



Majesty the Queen and T.R.H. The Prince and Princess of Wales, Pall Mall, London. Sold by D. Woodcock & Co., 17, Farringdon Street, London.]

Mixed method engraving, proof before letters on india. Printseller's Association Stamp. Artist Proof Edition, Limited to One Hundred Copies. Plate 406 x 502mm. 16 x 19³/₄". Uncut, few foxing marks. £620

A portrait of Quiz, a Maltese and the property of H.R.H. the Duchess of Kent, alongside a St Bernard and mouse. The original picture, exhibited at the Royal Academy in 1840, belongs to Her Majesty the Queen. From "Her Majesty's Pets being a Collection of Twenty Steel-Place Engravings from Paintings by Sir Edwin Landseer, R.A. By Special Permission of, and Dedicated to Her Most Gracious Majesty the Queen".

Ex Collection of Christopher Lennox-Boyd.

Stock: 23017

323. **[Lambkin.]**

[Engraved by Charles Mottram, 1875.] [Inside plate:

EL. 1851.] [EL: artist's monogram.] London Published

Jan.y 12.th 1875 by Henry Graves & Co, the

Proprietors Publishers to H.M. the Queen &, T.R.H.

The Prince & Princess of Wales, 6 Pall Mall,

Copyright Registered. [Published by Henry Graves &

Co. Printsellers and Publishers to Her Majesty the

Queen and T.R.H. The Prince and Princess of Wales,

Pall Mall, London. Sold by D. Woodcock & Co., 17,

Farringdon Street, London.]

Mixed method engraving, proof before letters on india.

Printseller's Association Stamp. Artist Proof Edition,

Limited to One Hundred Copies. Plate 438 x 534mm.

17¹/₄ x 21". Uncut. Foxing off image. £520

A Maltese terrier, the favourite dog of H.R.H. the Duchess of Kent, mother of Queen Victoria, drawn at Windsor Castle in 1851 during church-time. He died in 1855 and, like his owner, is buried at Frogmore in Windsor Home Park.

The original drawing belongs to Her Majesty the Queen, and hangs at Frogmore.

From "Her Majesty's Pets being a Collection of Twenty Steel-Place Engravings from Paintings by Sir Edwin Landseer, R.A. By Special Permission of, and Dedicated to Her Most Gracious Majesty the Queen".

Ex Collection of Christopher Lennox-Boyd.

Stock: 23030

324. **Miss Fanny.**

T.C. Wilson [in image.] Star, No.38. T.C. Wilson, Sc. Alvey, lith, London Rd. [n.d. c.1840.] Lithograph. 285 x 229mm. 11¼ x 9". £130
A profile portrait of a Cavalier King Charles Spaniel, Miss Fanny.
Stock: 23930

325. **[Bimbo the Clown, Pekinese.]**

Cecil Aldin. Printed by Eyre and Spottiswode (Publishers) Limited, London, E.C.4. Printed in England [n.d., c.1930].
Photolithograph. Printed area 270 x 215mm (10½ x 8½"). Laid on mount board, named in pencil on mount. £180
A white pekinese after Cecil Charles Windsor Aldin (1870-1935).
Stock: 60131



326. **[A Pekinese asleep.]**

HD. Herbert Dicksee [Signed in pencil.] Copyright 1924 by Frost & Reed Ltd. (of Bristol, England) in the United States of America.
Etching, signed by the artist. 125 x 260mm (5 x 10¼"), with publisher's blind stamps. Limited edition 100, plate destroyed. Framed. Unexamined out of frame. £980

Herbert Thomas Dicksee (1862-1942) was an English painter who specialised in paintings of dogs and animals. He studied at the Slade School of Art and his first painting was exhibited in 1881. His paintings were usually done from life; he kept numerous dogs as pets and frequented London Zoo. His daughter, Dorothy was the executor of his will, which directed her to destroy most of the plates for his etchings. *From the celebrated collection of Bryan & Valerie Steele.*
Stock: 54840

327. **[Pekingese.]**

H.Rayner. Drypoint Study [pencil]. [n.d., c.1939]
Drypoint etching, printed in sanguine, signed in pencil. 180 x 140mm. £220
Rayner (1902-1957) worked in the Antipodes before studying at the Royal Academy. He was a friend of Sickert.
Stock: 4792

328. **['The Emperor' - Pekinese.]**

A.Watson Turnbull [pencil]. [n.d. c.1935.]
Etching, signed by the artist. 150 x 200 mm (6 x 8"). £140
Andrew Watson Turnbull (British, 1874) was a painter, etcher and stained glass artist who exhibited at the R.A. and elsewhere.
Stock: 6199

329. **The Emperor. [In pencil.]**

A.Watson Turnbull. [Signed in Pencil.] [n.d. c.1935.]
Etching. Plate: 200 x 150mm (8 x 6"), with large margins. Mark in top left corner. £180
A portrait of a pekinese. Andrew Watson Turnbull (British, 1874) was a painter, etcher and stained glass artist who exhibited at the R.A. and elsewhere.
Stock: 40103

330. **[Pekingese.]**

Halpern [signed in pencil.] [n.d., c.1930.]
Etching. 160 x 180mm. £280
Stock: 2925

331. **Chein de Pomeramie.**

Werner pinxt et Lith . Lith de Cide Lust.
Coloured lithograph. 220 x 180mm [lithographed area], 520x 330mm [sheet]. £160
Stock: 6510

332. **Pomeranians of the 20th Century.**

Arthur Wardle 1904 [signed and dated in plate.]
Published by Art Engraving Department, Spratt's Patent Limited, London, E.C.3 1924.
Large photogravure on india paper, printed in colours. 525 x 710mm. 20¾ x 28". A fine impression with wide margins. Mint. £480
Six Pomeranian dogs, each animal named above and below the image, posed on stone steps in a garden. Arthur Wardle (British, 1864 -1949) was a prolific and very talented late nineteenth century artist who created an extraordinary body of work, yet surprisingly little has been written about him. Known by some as a painter of big game and wildlife, he is for dog lovers one of the pre-eminent painters of pure bred dogs that England has produced.
Stock: 23445

333. **[Toy Pomeranians] [Professional Beauties]**

Maud Earl. Copyright 1903 by Photographische Gescellshaft. Published by the Berlin Photographic Company Berlin - London V. 133 New Bond Street.
Photogravure on chine collé. 290 x 350mm (11½ x 13¾"), very large margins. £240
Pomeranians, 'Gateacre Dainty Belle', 'Gateacre Lupino' & 'Gateacre Philander'. Plate 23 of the 'Terriers & Toys' Portfolio.
Stock: 56326

334. **Pompey the Little.**

Printed and Sold by Carington Bowles, No 69 in St Pauls Church Yard, London. [n.d., c.1785.]

Engraving with original hand colour, rare. Sheet 165 x 245mm (6 $\frac{3}{4}$ x 9 $\frac{1}{2}$ "). Trimmed within plate, laid on album paper. £220

A small spaniel, the main character in Francis Coventry's hugely-successful satirical novel, 'The History of Pompey the Little; or, The Life and Adventures of a Lap-Dog', first published 1751. Pompey, born in Bologna ('a place famous for lap-dogs and sausages') describes society as he passes from owner to owner, exchanged for sexual favours, a gold watch and a pint of porter. Many of the human characters are thinly-veiled versions of society figures. The last edition was published in 1924.
Stock: 32952



335. **[Pug] Mischief.**

F. Sandys, pinxt. L. Flameng sculpt. London. Published 20th June, 1876 by Messrs Ellis & White, 29, New Bond Street.

Etching on chine collé. 255 x 310mm (10 x 12 $\frac{1}{4}$ "), with large margins. Printseller's Association blind stamp in inscription area. Damp stains in margins. £320

A pug rampaging through a knitting basket, with Chinese pot and furniture in background. Painted by Anthony Frederick Augustus Sandys (1829-1904), a painter and wood engraver best known for his Pre-Raphaelite portrait of women. The pug 'Mischief' belonged to Murray Marks, an antique dealer in the Pre-Raphaelites' circle.
Stock: 60123

336. **[Pugs.]**

Henry Wilkinson. Coloured etching signed by the artist. 235 x 305mm (9 $\frac{1}{4}$ x 12"). Limited edition: 34/250. £250
An etching by artist Henry Wilkinson (1921-2011) who specialised in sporting dogs and scenes.
Stock: 59659

337. **[Bulldog] British Pluck.**

Tom Revelery, Wantage, Photo. Walter L. Colls sc. Published by Walter L. Colls, 137 Castelnau, Barnes, Copyright registered. Photogravure. 225 x 640mm (9 x 25 $\frac{1}{4}$ "), with very large margins. Laid on board. £480
A very scarce photogravure showing five bulldog heads, taken from photographs.

Walter Lebbeus Colls (1860-1942), an amateur photographer himself (a vice-president of the West London Photographic Society 1889), specialised in reproducing photographs, based at a small local press near Hammersmith Bridge.
Stock: 47808

338. **England's Pride. "Champion Pressgang". K.G.S.B. 1226 E.**

Arthur Wardle 1902 [in image lower left.] Published by F. Mansell at 1 Orlestone Road, Holloway, London N. 7th. February 1903. Copyright registered. Photogravure on india. Plate 470 x 552mm. 18 $\frac{1}{2}$ x 21 $\frac{3}{4}$ ". £450

The first of four from a series on prominent Bulldogs from the last century.

Inscribed lower left in pencil: To Capt. G.A. Armytage with the Publisher's regards F. Mansell. 14/05/03".

Arthur Wardle (1860-1949), one of the widely known dog painters of the 19th and 20th centuries. See Ref: 21079 for framed and coloured, dated 1924.
Stock: 26630

339. **[Bulldog]**

Stuart. [Signed in Pencil] [n.d. c. 1930] - no.6/12 in left corner

Etching. 175 x 225mm £260
Stock: 5772

340. **[Dreadnought]**

Maud Earl 1909. Published by the Berlin Photographic Company Berlin - London W. 133 New Bond Street, London.

Photogravure, limited edition signed by the artist. 260 x 360mm. Remarque. Artists Proof. £480

Bulldog. The Fine Art Trade Journal (October, 1909): A Famous BULLDOG, Nuthurst Lad, sat as Model to Miss EARL'S Latest Picture. Winner of 70 Prizes. His Sire was Nuthurst Doctor, who won 26 Championships.

Stock: 2235

341. **[Bulldog between Two Cats.]**

Lilian Cheviot [pencil signature]. Copyrighted 1889, and Published by H.L. Riemschneider, 36, Great Portland Street, London W.

Photogravure, signed in pencil. Plate 380 x 470mm. 15 x 18 $\frac{1}{2}$ ". £240

A bulldog grumpily sat between two smiling cats. Lilian Cheviot (c. 1876 - 1936) was an English painter who flourished from 1894 to 1924.

Stock: 25756

342. **[Bulldogs.]**

Henry Wilkinson. Coloured etching signed by the artist. 250 x 350mm (9 $\frac{3}{4}$ x 13 $\frac{3}{4}$ "), with very large margins. Limited edition: 125/250. Mint. £180

An etching by artist Henry Wilkinson (1921-2011) who specialised in sporting dogs and scenes.
Stock: 59712

343. **The Three Graces.**

Painted by L.Darcy. Etched by W.A.Cox. Published by Richard Powell, 6 Grove Ltd, Brixton, London, S.W. Etching, 230 x 450mm. £320
Three bulldogs, with a remarque of a bulldog tearing at a trouser leg.
Stock: 1564

344. **[Chow Chow.]**

John Nicolson, signed in pencil. [n.d. 1920.] Etching, 260 x 200mm (10¼ x 8"..) £150
Stock: 4410

345. **Ind. Ch. Chounam Brilliantine.**

[Unidentified signature, pencil lower right.] Pestlo'hb_ [C.E. Collett.] [American?, n.d., c.1925.] Etching printed in colours, private plate?, 200 x 250mm. 8 x 9¾". Filled holes to lower left margin, one or two in plate. £360
A portrait of the world's most expensive dog, the Chow Chow named 'Ch. Choonam Brilliantine'.

As reported in The Kennel Gazette, September 1925: '...bred by Mrs Mannooch and was born in March 1924, sired by Akbar out of Ashvale Chop Chop. At his first appearance in the show ring at Cruft's show this year he was most signally successful and took his first Challenge Certificate at the age of eleven months... at eight Championship shows in succession he was a sterling winner, and at seven consecutive championship fixtures he was awarded the Grand Challenge Prize for best dog in the show, which is probably a record in any breed. The whole of his winning career in this country occupied less than five months and was actually completed before he was sixteen months old. Needless to say Mrs Mannooch received many offers for him and indeed was offered a three figure price the very first day he was exhibited at Crufts and on July 17th this year Ch. Choonam Brilliantine sailed for America, having been sold to Mrs Earl Hoover for £1,800 a price which is, in all probability, the highest ever paid for any dog.' Dorothy May White (1891 - c.1975) was married to the multimillionaire Howard Earl Hoover of Chicago, chairman of the Hoover Co., the vacuum cleaner empire; her father was President of the Chicago Board of Trade. Perhaps she commissioned this endearing etching of her beloved pooch.

A Chow Chow, a breed of dog first developed in Mongolia, and is often referred to in China as the 'Songshi Quan', the puffy-lion dog. It was in the 1800s that clippers ships between China and England brought cargo back and forth of miscellaneous objects, referred to as chow chow. The first chow chow dog appeared in England in the 1830s and retained the name chow chow after been transported in one of those clippers ships during one of the cargo voyages.

Stock: 17221

346. **[Dalmatian head]**

David Gee [pencil signature]. [n.d., c.1950.] Etching, 125 x 125mm (5 x 5") very large margins. £70
A dalmatian wearing a collar.
Stock: 55434



347. **Dogs of the Dalmatian breed. - from an original picture in the possession of Sir John Fleming Leicester Baronet &c. &c.**

James Ward R.A. Pinx et Delt. London Pubd. May 1st. 1824. R. Ackermann Strand.

Lithograph on india laid paper, image 370 x 510mm (14½ x 20"). Some foxing. Tatty extremities outside india. £850

While there is no reference by Julia Frankau to this very unusual and rare lithograph of the Dalmatian dog, an exhibition list does mention a drawing with the same title exhibited at the British Institute in 1806. A prolific artist, James Ward R..A. (1769 - 1859) was one of the finest animal, portrait, and landscape painters of Regency England. Brittle, pious, and argumentative, Ward worked well into the mid-19th century, creating dynamic compositions that epitomized Romanticism. He was devoted to the art of Rubens and Van Dyck, and emulated them more than any of his contemporaries.

Stock: 9078

348. **[Dalmatians.]**

Henry Wilkinson. Coloured etching signed by the artist. 245 x 345mm (9¾ x 13½"), with very large margin. Limited edition: 163/250. Mint. £180

An etching by artist Henry Wilkinson (1921-2011) who specialised in sporting dogs and scenes.
Stock: 59711

349. **[Keeshond]**

H.Rayner. [n.d., c.1939] Drypoint etching, signed in pencil. 175 x 130mm. £190
Rayner (1902-1957) worked in the Antipodes before studying at the Royal Academy. He was a friend of Sickert.
Stock: 4790

350. **Portraits of Three Dogs. Billy Rose Tumbler. The property of F. Redmond. Dedicated by permission to the Right Hon.ble Lord Macdonald by his Obedient humble Servant D. Wolstenholme.**

Painted by D. Wolstenholme Jun.r. Engraved by John Bromley. London, Published Aug.st 6, 1834, by D. Wolstenholme, 22 Chad's Row, Grays Inn Road.

Coloured mezzotint. Printed area; 360 x 420mm.
Light spotting. Repaired hole on publication line.
Pasted into mount. £420

Ex: *Collection of The Hon. C. Lennox-Boyd.*
Stock: 6690

351. Alpine Guardians. The Discovery and Rescue.

Painted by Sir Edwin Landseer, R.A. Engraved by Thos. Landseer. Proprietors, Owen Bailey, 4 Arlington Street, Mornington Crescent, London. [n.d., c.1850.] Mixed-method engraving. 470 x 560mm. £170
St. Bernard dogs (formerly 'Alpine Mastiffs'), complete with brandy casks, with the alpine Monastery of St Bernard in the background.
Stock: 3664



352. [A set of original illustrations by Neave Parker for 'Chips the Alsatian'.]

[Larger images signed 'Neave Parker' to inset cartouche; one dated [19]40 by the artist. All are stamped '2 May 1940' to verso.]

Eighteen (18) pen & ink drawings on scraperboard, cut to various sizes: six c.240 x 165mm, 9½ x 6½"; the rest 195 x 160mm (7¾ x 6¼"), or smaller. Various pen and pencil annotations to margins and versos; all are captioned with their intended positions in the text, i.e. 'Chap 4 page 36'. Larger images also with relevant quotation. Most with pinholes to margins; generally a little bumping and creasing to sometimes rough-cut extremities. Altogether a fine set. £650

The book by Lady Kitty Edith Blanche Vincent (afterwards Ritson) was one of the 'Animals All' series of children's books. It was first published in London by T. Nelson & Sons in 1940. A unique archive of lively and engaging images following the life of a robust

Alsatian puppy to adulthood; scenes of the dog at work and play, in a variety of poses and engaged in a variety of activities, indoors and outdoors. One image features a pony. The final sketch is lettered 'The End' in pen in thick ruled Gothic script.

W. Neave Parker (1910 - 1961) worked as a surveyor for a short while before going on to serve in the Royal Air Force during the Second World War, working in the Photographic Unit. After making the acquaintance of Maurice Burton, a scientific associate at the Natural History Museum and also honorary science editor at the Illustrated London News, he began to produce animal illustrations. The first of his drawings of prehistoric animals appeared in the Illustrated London News on 30 September 1950. He became an accomplished scientific illustrator and the National History Museum commissioned him to do a series of picture postcards; the museum retains the 19 original drawings for this series. Parker also illustrated numerous children's books. His drawings are held in the Ulster Museum and he was the subject of an exhibition there entitled, 'The Prehistoric World of Neave Parker' in 1993. See *BLW.P.5331/8*.
Stock: 25284

353. [Alsations.]

Henry Wilkinson.
Coloured etching signed by the artist. 245 x 350mm (9¾ x 13¾"), with very large margins. Limited edition: 29/250. Mint. £220
An etching by artist Henry Wilkinson (1921-2011) who specialised in sporting dogs and scenes.
Stock: 59710

354. Lucy, A Celebrated Bull Bitch by Blockey, out of old Patch. Bred by Mr. Howard. Now the Property of Mr. Bond.

Painted by Smith. Engraved by Pyall. Published Novr. 1834, by S. Knight, Sweetings Alley, Cornhill. Aquatint, 320 x 355mm. 12½ x 14". Slight foxing; closed tear to upper margin. £250
Not in Siltzer.
Stock: 25790

355. [Collie.] 'Eclipse'.

Painted by Frank Paton. Engraved by J.B. Pratt. London Published 2nd Jany. 1888. by E.E. Leggatt. 62 Cheapside_ Knoedler & Co. New York. Mixed method engraving. 635 x 785mm. Small area of wear in left background. £320
Stock: 4568

356. [Collies.]

Vernon Stokes. [n.d., c.1944.] Chalk drawing. Sheet: 230 x 330mm (9 x 13"). Trimmed and laid on board. £120
A portrait of two collies. An original drawing by animal artist George Vernon Stokes (1873-1954) for Muriel Denison's 'Happy Tramp: the Story of a Little Girl and Her Old English Sheep Dog', 1944. After her father is wounded as a soldier in World War II and her mother is killed by in a German air raid Biddie and her Old English Sheepdog are evacuated to America where

her father has found work as a kennel man for a wealthy New York dog breeder.

Stock: 47827

357. **[Border Collies.]**

Henry Wilkinson.

Coloured etching signed by the artist. 250 x 345mm (9¾ x 13½"), with very large margins. Limited edition: 96/200. Mint. £220

An etching by artist Henry Wilkinson (1921-2011) who specialised in sporting dogs and scenes.

Stock: 59709

358. **[Rough Collies.]**

Henry Wilkinson.

Coloured etching signed by the artist. 250 x 345mm (9¾ x 13½"), with very large margins. Limited edition: 5/250. Mint. £220

An etching by artist Henry Wilkinson (1921-2011) who specialised in sporting dogs and scenes.

Stock: 59708

359. **[Waiting and Watching - border collies.]**

Wright Barker 1896.

Etching, signed by the artist. 330 x 560mm. Some surface abrasions. £420

Border collies at rest.

Stock: 516

360. **Der Windhund. Canis Leporarius. Le Levrier. 1. Die englische Dogge. Canis molossus anglicus. Le Dogue de forte race. 1/9. 39.**

[n.d. c.1847.]

Lithograph with small margins. 330 x 228mm (13 x 9"). £120

A Greyhound and Mastiff.

From "Panorama der Saeugethiere lithographirt und herausgegeben von H. Reichert". See Ref: 29496 for reverse version.

Stock: 29495

361. **Studies of a 'Huskie'. Jules, son of 'Chinook'.**

Diana Thorne [pencil signature]. [n.d. c. 1920]

Etching. 325 x 215mm. Background rubbed top left. £160

Stock: 6129

362. **Le Chien du Leonberg.**

50 Anee Journal des Chaveurs et des eleveurs. 116, rue Verte Bruxelles.

Chromolithograph 260 x 185mm. £60
Stock: 3494

363. **Chiens de Terre-neuve.**

Eugène Verboeckhoven 1844. Imp. Lemercier, Paris.

Paris, H. Gache, 66 rue de la Victoire.

Lithograph, scarce. Sheet: 335 x 510mm (13¼ x 20"). £230

A scene showing three Newfoundland dogs.

Stock: 47485

364. **Le Chien de Terre Neuve.**

Beaume paxit. Marin Lavigne lith. Lith. Frick freres, Paris. [Paris &] Londres chez V. Delarue [n.d., c.1870].

Lithograph with hand colouring and gum arabic, image 325 x 420mm. 12¾ x 16½". A few marginal spots and tears; colour very fine. £360

Magnificent and large image of a Newfoundland dog pulling a child out of a river; the child's mother in an agitated state in background upper right.

Stock: 22758



365. **['She thought the judging would never end'.]**

C.M.H. V.S. [n.d., c.1944.]

Drawing. Sheet: 205 x 185mm (8 x 7¼"). On board with pencil annotations. £220

A scene showing a young girl showing her Old English Sheepdog in a dog show.

An original illustration by illustrator and author Cynthia Harnett (1893-1981) and animal artist George Vernon Stokes (1873-1954), for Muriel Denison's 'Happy Tramp: the Story of a Little Girl and Her Old English Sheep Dog', 1944. After her father is wounded as a soldier in World War II and her mother is killed by in a German air raid Biddie and her Old English Sheepdog are evacuated to America where her father has found work as a kennel man for a wealthy New York dog breeder.

Stock: 47832

366. **['Runtie lay still & let Elizabeth Virginia pull']**

CMS. GVS. [n.d., c.1944.]

Pencil drawing. Sheet: 305 x 220mm (12 x 8¾"). Laid on board. £150

A scene in which a young girl pulls at the hair of an Old English Sheepdog. An original drawing by animal artist George Vernon Stokes (1873-1954) for Muriel Denison's 'Happy Tramp: the Story of a Little Girl and Her Old English Sheep Dog', 1944. After her father is wounded as a soldier in World War II and her mother

is killed by in a German air raid Biddie and her Old English Sheepdog are evacuated to America where her father has found work as a kennel man for a wealthy New York dog breeder.

Stock: 47826

367. **Pal.**

H. Goffey signed in pencil. [n.d. 1940.]

Etching. 195 x 275mm. Minor creasing in the margins. £140

A Siberian Husky.

Harry Goffey (1871-1951).

Stock: 2750

368. **Les Chiens du S.t Bernard.**

Landseer pinx. Marin Liavigne del. Lith de C. Motte. Publié par Rittner & Goupil, 13 Boulevard Montmatre [n.d., c.1860].

Lithograph on chine collé, with printed backing paper. Sheet 415 x 480mm (16¼ x 19"). Backing sheet spotted. £120

A scene of two St Bernard dogs standing over and protecting a traveller lying beneath a pile of snow, with one of the dogs barking to alert three monks in the background. Further back is the hospice.

This famous scene encouraged the myth that the dogs carried small casks of brandy on their collars.

Stock: 60194

369. **Dogs of St. Bernard's.**

G.A.Fitzwygram Esq.r [after Edwin Landseer]. [n.d., c.1850.]

Lithograph on chine collé, on printed backing sheet, total 410 x 505mm (16 x 19¾"). Tear in backing sheet taped on left. £320

An adapted copy in reverse of Edwin Landseer's 1820 painting of two St Bernard dogs standing over and protecting a traveller lying beneath a pile of snow, the hospice in the background. In this version the traveller's head is buried and there is no monk behind. This famous scene encouraged the myth that the dogs carried small casks of brandy on their collars.

Stock: 60116

370. **[Woman, boy, & St Bernard.]**

Daniel A. Wehrschmidt [Pencil signature] Newcastle-upon-Tyne, 2nd January, 1904. Published by Messrs Mawson, Swan & Morgan Ltd., 11, Grainger Street West.

Mezzotint on india paper, sign by the artist. 470 x 450mm (18½ x 17¾"), Printsellers' Association blind stamp. Some spotting £280

A circular portrait of the three subjects lying on the floor, a fluted pillar, grape vine and wooded landscape behind.

Daniel Albert Wehrschmidt (Veresmith) (1861-1932) is best known for his portrait of Scott of the Antarctic, the only one done from life.

Stock: 47714

371. **[The Dogs of St. Bernard.]**

[George Baxter after Edwin Landseer.] [n.d., c.1860.]

Baxter process. Sheet 440 x 605mm (17¼ x 23¾").

Trimmed to image as usual, laid on board. £120

A scene of two St Bernard dogs standing over and protecting a traveller lying beneath a pile of snow, with one of the dogs barking to alert three monks in the background. Further back is the hospice.

This famous print encouraged the myth that the dogs carried small casks of brandy on their collars.

Stock: 47713

372. **St. Bernard.**

John C. Janes [Pencil signature.] [n.d.,c.1940]

Etching 202 x 152mm.

£220

Stock: 3430



373. **Le Chien De L'Hospice.**

Wafflard Pinxt. Dibart Sculpt. Depose a la Direction.

Se Vend a Paris, chez Bance, Rue St. Denis, No.214.

Chez Benard, Boulevard des Italiens, No.11. chez

Vilquin, Cour du Palais Royal, No.20. Et chez l'Auteur Rue de Grenelle No.86, F.S.G. [n.d., c.1820.]

Stipple and etching, 500 x 365mm. 19¾ x 14¼". A fine impression, in near mint condition. Slight crease across the middle, which is not visible. £350

A dog arrives at the door of an Alpine hospice, an exhausted child, rescued from an avalanche by the animal, clinging to its back. The story is recounted in two lines of text below the title.

The 'Hospice du mont Saint-Bernard', a traveller's hospice on the often treacherous St. Bernard Pass in the Western Alps between Switzerland and Italy, is the origin of the name of the St. Bernard breed of dog, a working dog from the Swiss Alps, originally bred for rescue.

Stock: 13639

374. **Taffy.**

H.Goffey [Pencil signature]. [n.d., c.1940].

Etching. signed by the artist. 270 x 190mm (10½ x 7½"). £260

Harry Goffey (1871-1951). Possibly an Old English Sheepdog.

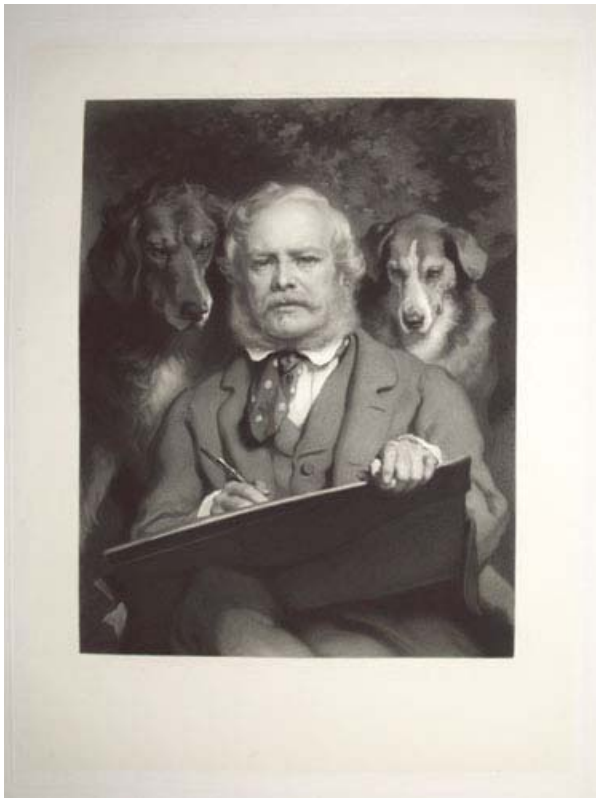
Stock: 2751

375. **A Bear Hunt.**

Design'd by G.Morland. Engrav'd by S.W.Reynolds.
London: Published April 1st 1796, by S.W.Reynolds,
No 6. Rolls Buildings Fetter Lane.
Mezzotint. 325 x 380mm (12¾ x 15"). £520
Whitman: 409. Ex: Collection of The Hon. C. Lennox-Boyd.
Stock: 4282

376. **Chivied.**

Painted by Samuel J. Carter. Engraved by A.C. Alais.
Printed by A. Holdgate. London. Published July 17th
1886, by Henry Graves & Co. Proprietors Publishers to
HM the Prince & Princess of Wales, 6 Pall Mall.
Copyright Registered.
Mezzotint with engraving. Platemark: 695 x 550mm
(27¼ x 21½"). Damage to edges of sheet. Staining in
margins. Very large margins. £130
Two kittens look down at three puppies, who have
chased them up into a tree. A later issue of this print
was published with the title, 'Baffled'.
After reputed animal painter Samuel John Carter
(1835-1892).
Stock: 39244



377. **[The Connoisseurs.]**

[Painted by Edwin Landseer R.A. Engraved by Samuel
Cousins, A.R.A.] London; Published Dec.r 10th 1867,
by Henry Graves & Co the Proprietors, Publishers to
H.M. the Queen, and T.R.H. the Prince & Princess of
Wales _ 6 Pall Mall. Copyright Registered.
Mezzotint on india, proof before letters, 'Printsellers'
Association' blindstamp. Plate mark 580 x 430mm (23
x 17"), very large margins. Very slight foxing mainly
in large margins. £450
Landseer's self portrait, accompanied by two dogs.
Whitman: Samuel Cousins, 99, state II of II.
Stock: 57856

378. **[Metgen Mor, wife of the artist?] Retrato desconocido, pintado por Antonio Moro, que está en el Real Palaciode Madrid.**

Antonio Mor lo pinto. Bart. Vasq.z lo grabó. 1793.
Stipple. Sheet 360 x 270mm (14¼ x 10½"). Trimmed
close to image, mounted in album paper. £220
A seated woman in mid-16th century Flemish dress,
with a lapdog (probably a Cavalier King Charles
spaniel) under her right hand, used as a symbol for
marital fidelity. Although the sitter is believed by
some to be Metgen Mor, wife of the Flemish painter
Antonis Mor (or Antonio Moro), the Museo del Prado
describes the original oil of 1565 (P002114) as merely
'Portrait of a Seated Woman'.
The plate was engraved by Bartolome Vasquez for the
'Compañía para el grabado de los cuadros de los Reales
Palacios', the 'Company for the engraving of the
paintings from the Royal Palaces'.
Stock: 60119

379. **[Metgen Mor, wife of the artist?] Retrato desconocido, pintado por Antonio Moro, que está en el Real Palaciode Madrid.**

Antonio Mor lo pinto. Bart. Vasq.z lo grabó. 1793.
Stipple. Sheet 395 x 290mm (15½ x 11½"). Trimmed
within plate, dusty. £120
A seated woman in mid-16th century Flemish dress,
with a lapdog (probably a Cavalier King Charles
spaniel) under her right hand, used as a symbol for
marital fidelity. Although the sitter is believed by
some to be Metgen Mor, wife of the Flemish painter
Antonis Mor (or Antonio Moro), the Museo del Prado
describes the original oil of 1565 (P002114) as merely
'Portrait of a Seated Woman'.
The plate was engraved by Bartolome Vasquez for the
'Compañía para el grabado de los cuadros de los Reales
Palacios', the 'Company for the engraving of the
paintings from the Royal Palaces'.
Stock: 60118

380. **[Metgen Mor, wife of the artist?]
[Retrato desconocido, pintado por Antonio
Moro, que está en el Real Palaciode Madrid.]**

[Antonio Mor lo pinto. Bart. Vasq.z lo grabó. 1793.]
Stipple, proof before letters. 450 x 350mm (17¾ x
13¾"), large margins. Collector's stamp of the Defer-
Dumesnil Collection on reverse. Slight central crease.
£260

A seated woman in mid-16th century Flemish dress,
with a lapdog (probably a Cavalier King Charles
spaniel) under her right hand, used as a symbol for
marital fidelity. Although the sitter is believed by
some to be Metgen Mor, wife of the Flemish painter
Antonis Mor (or Antonio Moro), the Museo del Prado
describes the original oil of 1565 (P002114) as merely
'Portrait of a Seated Woman'.
The plate was engraved by Bartolome Vasquez for the
'Compañía para el grabado de los cuadros de los Reales
Palacios', the 'Company for the engraving of the
paintings from the Royal Palaces'. *Lugt L.739 for
collector's stamp.*
Stock: 60120

381. **The Pilgrim.**

W. Hamilton R.A. pinx.t. Jos.h Barney sculp.t.
London, March 1 1794; Published by Darling &
Thompson, (Printsellers to the Duke & Duchess of
York) Great Newport Street and M. Chamberlin No 51
Great Russel Street.

Stipple. 555 x 410mm (22 x 16"), very large margins.
Slight paper soiling. £260

A woman seated at a rustic spring, staff and rosary in
her hands, a Cavalier King Charles Spaniel lying at her
feet. She wears a hat and short cape decorated with
shells.

Stock: 47934

382. **Sir Joseph Radcliffe of Milns-Bridge-
House near Huddersfield Bar.t. For the
Prompt & Judicious Exertions of this Intrepid
Magistrate during a Period of Insubordination,
Danger & Alarm, in the year 1812. His
Sovereign Created Him a Baronet with the
Singular Favor of a Gratuitous Patent. The
Original Portrait placed in the Court House at
Wakefield, and This Print are the tribute of
Public Respect and Gratitude.**

Painted by W. Owen R.A. Portrait Painter to H.R.H.
the Prince Regent. Engraved by J. Heath, Engraver to
His Majesty & H.R.H. the Prince Regent. [n.d., 1813.]
Engraving. Sheet 585 x 365mm (22¼ x 14½").
Trimmed within plate. £240

Portrait of Joseph Radcliffe (1744-1819), seated with a
large dog lying between his feet.

A magistrate for the West Riding of Yorkshire,
Radcliffe gained a reputation for heavy-handed justice.
'The Insubordination' commemorated by this portrait
was that of the Luddites: he used spies and informers to
infiltrate workers' meetings and, having sent three men
to trial, sat on the jury that sentenced them to death. He
then watched the hanging.

Stock: 60121

383. **Sir Joseph Radcliffe of Milns-Bridge-
House near Huddersfield Bar.t. For the
Prompt & Judicious Exertions of this Intrepid
Magistrate during a Period of Insubordination,
Danger & Alarm, in the year 1812. His
Sovereign Created Him a Baronet with the
Singular Favor of a Gratuitous Patent. The
Original Portrait placed in the Court House at
Wakefield, and This Print are the tribute of
Public Respect and Gratitude.**

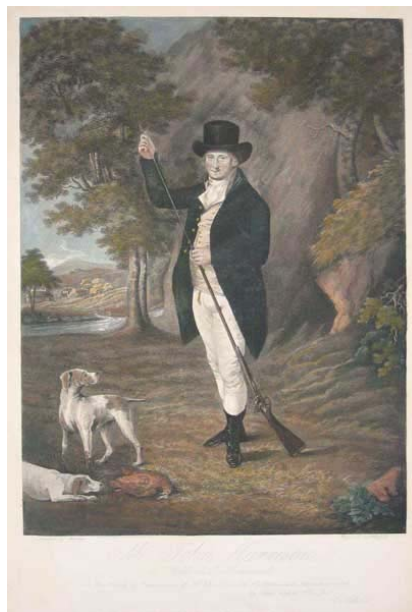
Painted by W. Owen R.A. Portrait Painter to H.R.H.
the Prince Regent. Engraved by J. Heath, Engraver to
His Majesty & H.R.H. the Prince Regent. [n.d., 1813.]
Engraving on chine collé. Sheet 580 x 365mm (220 x
14½"). Trimmed inside platemark. £280

Portrait of Joseph Radcliffe (1744-1819), seated with a
large dog lying between his feet.

A magistrate for the West Riding of Yorkshire,
Radcliffe gained a reputation for heavy-handed justice.
'The Insubordination' commemorated by this portrait
was that of the Luddites: he used spies and informers to
infiltrate workers' meetings and, having sent three men

to trial, sat on the jury that sentenced them to death. He
then watched the hanging.

Stock: 60122



384. **Mr. John Harrison of Childs-hill,
Hampstead. To the Friends & acquaintance of
Mr. John Harrison this plate is with pleasure
inscribed by Their most ob.t H.ble Serv.t J.
Hassell.**

Painted by Forster. Engrav'd by J. Hassell. London
Publish'd Jany. 1st 1799 by J. Hassell No. 23 Clarges
Street Piccadilly.

Coloured aquatint. 385 x 555mm. Laid on card.
Slightly trimmed, plate mark still visible. £420

A hunter with a musket, a dead bird at his feet.

Stock: 2550

385. **Ralph John Lambton Esq.r His Horse
Undertaker, & Hounds. (Calling Hounds out of
Cover.)**

Painted by James Ward Esq.r R.A. Engraved by C.
Turner. London, Published Sept.r 1821, by C. Turner,
50 Warren Street, Fitzroy Square.

Mezzotint with etching. 560 x 780mm (22 x 30¾").
Tears taped, some creasing. £360

A rare large image showing Ralph John Lambton
(c.1767-1844), MP for Durham City, on horseback in a
landscape, a pack of hounds around him.

A preparatory pencil sketch by Ward of Lambton and
Undertaker, dated 1802, is held by the Yale Centre for
British Art. The BM has a key plate with the names of
the dogs. *Whitman 299, state ii of ii, published state.*

Stock: 47939

386. **McQueen's Dogs at the Jubilee Banquet.
The Queen & The Royal Family! 'God Save the
Queen'. Richard III. A VI S I.**

Walter T. Allen. London Published Dec.r 1st 1886 by
F.C. McQueen & Sons, 181 Tottenham Court Road,
W. Stiefbold & Co Berlin, Knoedler & Co New York -
Copyright registered.

Photogravure with hand colour. Sheet 445 x 345mm
(17½ x 13½") very large margins. £260

Anthropomorphic bulldog, wearing evening attire with the Order of the Garter, proposing the Royal toast, with a quote from Shakespeare, with stamp. *See Ref: 51420 in series.*

Stock: 60049

387. Steeple Chase Cracks. Une Course au Clocher.

D'Orschwiller Pinx. Régnier, Bettannier, Morlon lith. New York Pub.d by W. Schaus, 749 Broadway. Paris, François Delarue, rue JJ. Rousseau 18. Entered according to Act of Congress in the year 1860, by W. Schaus in the clerk's Office of the district Court of the United States for the Southern district of New York. Imp. F.ois Delarue, Paris.

Coloured lithograph. 528 x 856mm. 20¾ x 33¾". £520
A satire on horse-racing: jockey monkeys riding dogs in a race.

Stock: 20677

388. [William Jackson] A Jack in Office.

R Dighton del.t. Pub. Jan.y 4.th 1793.

Hand-coloured etching, plate: 200 x 150mm (8 x 6"), with very large margins. On paper watermarked 1816. £120

A caricature portrait of exciseman William Jackson shown with his excise book in his pocket and a poodle urinating on his legs. *BM Satire 8395. For another version of this print see 50997.*

Stock: 60039

389. An Irish Epitaph.

Woodward del. Cruikshank F. Published by T. Tegg. 111 Cheapside. [n.d. c.1807.]

Hand-coloured etching. 235 x 331mm (9¼ x 13"). Trimmed to the image. Messy. £180

A scene in a country churchyard; An old Irish couple, with a dog, gaze at a (tilted) tombstone to the right, inscribed: 'Here lies Iohn Highley. whose Father & Mother. were Drown'd in their passage to America. Had they both lived they would have been Buried Here.' The dog is seen cocking his leg below. *BM Satires 10914. Reid 23.*

Stock: 52240

390. "They Won't be Happy Till They Get 'Em."

[Etched by Frank Paton.] G.Yates Carrington /88 [London, Published May 17th 1889 by E.E.Leggatt, 62 Cheapside, E.C.]

Rare etching. 285 x 355mm (11¼ x 14"). Various repaired tears not in the cricket image. £180

The central image of two terriers either side of a guinea pig's hutch is surrounded by nine vignette scenes. One of these is a cricket match, a scoreboard inscribed with the scores of the opening batsmen: 302 and 189 runs for numbers 1 and 2 respectively.

Frank Paton (1856 - 1909) was a successful artist during his lifetime and could even count Queen Victoria as an admirer of his work. He is perhaps most widely known for his series of etched Christmas cards published annually by Edward Ernest Leggatt from 1880 until Paton's death in 1909. They were intended

to be a cut above the average Christmas card and sold for half a guinea each. Their format became quite formulaic over the years. A central subject reflecting the title of the print was usually complemented by a series of often humorous sketches around its border. A number of the prints would be sent from the printers to be signed in pencil by Paton, as here. A cricketing item.

Stock: 60117

391. It's no use Tiney, we must go to the gate.

Lithographed by C.J. Culliford, 22, Southampton S.t Strand. Published Nov.r 11.th by Mess.rs Fielding & C.o. 5, Melton Street, Euston Squ.e. London. [n.d. c.1858.]

Coloured lithograph, 380 x 285mm (15 x 11¼"). £140
A satire on the mid 19th century fashion for crinolines. A woman walking her small dog is blocked by her crinoline dress going through a small passage in a fence.

Stock: 60113



392. [Laying Down the Law]. To the Right Honourable John Singleton Copley, Lord Lyndhurst, Lord High Chancellor of England, This Engraving of Laying Down the Law, is by special desire dedicated to His Lordship by his obedient humble servant Thomas McLean.

Painted by Sir E. Landseer, R.A. Engraved by Thomas Landseer. London, Published Dec. 1. 1860 by A.J. Isaacs, 56, Bishopsgate St. Within.

Mixed method engraving. 685 x 725mm (27 x 28½"), large margins. Part of dedication weakly inked, laid on backing paper. £550

A parody of a courtroom, with a large white poodle mimics a judge in his white wig, a paw upon the statute book. The original painting, exhibited at the R.A. in 1840, was bought by the Duke of Devonshire and remains at Chatsworth.

Originally published by Thomas McLean in 1843.

Stock: 57968

393. **Coursing.**

[G. Morland.] London Published Augst. 16, 1804, by John P. Thompson, Gt. Newport Street.

Stipple printed with blue and brown, some colour added by hand. Sheet 355 x 410mm, 14 x 16". Tatty extremities; trimmed close to plate. £360

A hare (far right) is flushed from cover by two lurchers; a beater with his stick and spaniel at his side in centre, two men and another dog in landscape beyond.

After George Morland (1762/3 - 1804), from a series of hunting scenes showing different quarry. Originally published 1790 by T. Simpson, and re-published by Thompson in 1814; a version with French title was engraved by Suntach in 1791. See *Siltzer pp.189-190*. Stock: 22728



394. **Raby Pack. The Earl of Darlington's Fox-Hounds in their Kennel, Representing correct Portraits of the most celebrated Hounds, Also His Lordship's Huntsman, and Dog-Feeder, Sayer & Leonard.**

Painted by H.B. Chalon, animal Painter to their R.H.s the Prince Regent & Duke & Duchess of York and to H.R.H. the Princess Charlotte of Wales. Engraved by W. Ward A.R.A. Engraver to their R.Hs. the Prince Regent & Duke of York. London, Published & Sold April 20 1814 by Edwd. Orme, Bond Street, corner of Brook Street, Publisher to His Majesty, & H.R.H. the Prince Regent.

Mezzotint. 535 x 645mm (21 x 25½"). Trimmed to plate top and bottom, with a few repairs to edges. £690
The hounds belonging to William Harry Vane, 1st Duke of Cleveland and Earl of Darlington (1766 - 1842) coming to eat at troughs in their kennels. The dog-feeder Leonard in centre wears top hat and waistcoat, the huntsman Sayer stands in the doorway at right.

Hounds named below image, with arms bearing the motto 'Nec Temere Nec Timide'.

A great British sporting print, first published 1809, after Henry Bernard Chalon (1771-1849). *Frankau: 235, II. Siltzer: pg.92*.

Stock: 52876

395. **Chasse au Chien D'Arrêt.**

Peint par O.De Penne. Photogravure Goupil & Co. Imprimé & Publié par Goupil & C.ie Editeurs le 1.er Avril 1880.

Photogravure on india paper. 620 x 760mm. A few marginal tears. £470
Stock: 1665

396. **La Chasse du Canard. [Duck hunting].**

Peinte par G. Morland et Dirigee par A. Suntach. Publié les 15 Decembre 1791 par Antoine Suntach.

Stipple. Platemark: 270 x 315mm (10 ½ x 12¼"). Large margins. Small holes in margins. £260

A man sitting beside water with a duck in his hands, his rifle resting against tree at left and his dogs at right, one looking up hungrily at the bird.

After English painter, George Morland (1762/3 - 1804) renowned for his scenes of English rural life and picturesque landscapes. Engraved and published by Italian reproductive stipple engraver, Antonio Suntach (1744 - 1828).

Part of a series of nine hunting scenes, including some plates after Ibbetson.

Stock: 33234

397. **[Gun dogs at rest.]**

[Painted by James Hardy, Etched by E. G. Hester.] [n.d. c.1880.]

Etching on india, proof before letters. 265 x 375mm. £420

A Gordon Setter and a Pointer at rest, with the day's bag behind. A remarque of 'a drive' lower left.

Stock: 3019

398. **La Chasse du Lievre. [Hare hunting].**

Peinte par G. Morland et Dirigee par A. Suntach. Publié les 15 Septembre 1791 par Antoine Suntach.

Stipple with very large margins. Platemark: 270 x 315mm (10 ½ x 12¼"). A fine impression. £390

A man is preparing his rifle to the left, as his dog smells a hare in the undergrowth at the lower right.

After English painter, George Morland (1762/3 - 1804) renowned for his scenes of English rural life and picturesque landscapes. Engraved and published by Italian reproductive stipple engraver, Antonio Suntach (1744 - 1828).

Part of a series of nine hunting scenes, including some plates after Ibbetson. *Oettingen-Wallerstein Collection*. Stock: 33221

399. **Hare Shooting.**

G. Morland pinx.t London. [n.d. c.1800.]

Mixed method engraving. 340 x 370mm. Repaired tear, just touching the title. £550

Stock: 4292

400. **Le Lunch.**

Peint par Heywood Hardy. Photogravure Goupil & Cie. Imprime & Publie le 1er. Avril 1892 par Boussod, Valadon & Co. Editeurs, Successeurs de Goupil & Cie. Paris_Londres_La Haye. Berlin, Verlag von Boussod, Valadon & Cie. New-York, Published by Valadon & Co.

Photogravure coloured by hand, on india laid paper. 600 x 740mm. 23½ x 29". £420

Very fine shooting party scene with retrievers.
Stock: 8487

401. Dans la Bruyère.

Peint par Hermann-Leon. Photogravure Goupil & Co.
Imprimé et Publié par Boussod, Valadon & C.ie.,
Successors de Goupil & C.ie le 1.er 8bre 1885 _ Paris
Londres _ La Haye.
Photogravure on india paper. 480 x 480mm. £400
A pointer in the heather, with a partridge.
Stock: 7024



402. [On The Moors (Dogging).]

Heywood Hardy 1890. Printed in Paris & Published
April 1st 1894 by Boussod Valadon & Co. Publishers,
Successors to Goupil & Co. Paris_London_The Hague.
Berlin Verlad von Boussod, Valadon & Co. New York
Published by Boussod, Valadon & Co.
Photogravure, printed in colours, proof before title,
signed by the artist. 590 x 745mm (23¼ x 29¼").
Repaired tear in top margin, some surface wear and
soiling. £680
Very fine shooting scene with setters.
Stock: 32429

403. La Chasse du Faisan. [Pheasant hunting].

Peinte par J. Ibbetson. Dirigee par A. Suntach. Publié
les 15 Avril 1791 par Antoine Suntach.
Stipple with small margins. Platemark: 270 x 315mm
(10 ½ x 12¼"). £370
A Pheasant hunting scene with two men and their dogs
in a woodland area. In the foreground to the right, a
man is directed to the left with his gun facing
outwards, whilst in the background to the left, the
second man takes aim at a Pheasant in flight, which
can be seen in the sky in the centre of the image.
Engraved and published by Italian reproductive stipple
engraver, Antonio Suntach (1744 - 1828).
Part of a series of nine hunting scenes, including some
plates after Morland. *Oettingen-Wallerstein Collection*.
Stock: 33225

404. Duck Shooting.

G. Morland Pinxt. London. [n.d. 1800].
Mezzotint. Plate: 370 x 335mm (14½ x 13¼"). Tear
into plate in top edge. Margins messy. £360
An exterior scene in marshland which a man,
accompanied by his gun-dog, shoots at some ducks.
Stock: 39881

405. La Chasse De La Becassine. [Snipe hunting].

Peinte par G. Morland. Dirigee par A. Suntach. Publié
les 15 Aout 1792 par Antoine Suntach.
Stipple with large margins. Platemark: 270 x 315mm
(10 ½ x 12¼"). £380
Winter scene with a man aiming a rifle to right to shoot
a bird out of the sky, his dog, below at left watching
the prey. Two other men can be seen with their guns on
the snow in the background.
After English painter, George Morland (1762/3 - 1804)
renowned for his scenes of English rural life and
picturesque landscapes. Engraved and published by
Italian reproductive stipple engraver, Antonio Suntach
(1744 - 1828).
Part of a series of nine hunting scenes, including some
plates after Ibbetson. *Oettingen-Wallerstein Collection*.
Stock: 33230

406. Snipe Shooting.

Painted by Heywood Hardy, Goupil gravure. Printed in
Paris & Published April 1st 1895 by Boussod Valadon
& Co. Publishers, Successors to Goupil & Co.
Paris_London_The Hague. Berlin Verlad von Boussod,
Valadon & Co. New York Published by Boussod,
Valadon & Co.
Photogravure. 590 x 755mm. £680
Very fine shooting scene with retrievers.
Stock: 3022

407. [Gun Dog.]

F. Barlow delin. J. Smith excudit. [n.d., engraved
c.1690 but printed later.]
Mezzotint. Plate: 145 x 200mm (5¾ x 8"). Small
margins. £70
A scene showing a pheasant shoot, one figure is led on
a horse while in the foreground a spaniel lies watching
a covey of games birds.
Stock: 47451

408. La Chasse De La Bécasse. [Woodcock hunting].

Peinte par G. Morland. Dirigee par A. Suntach. Publié
les 15 Juin 1790 par Antoine Suntach.
Stipple. Platemark: 270 x 315mm (10 ½ x 12¼").
Large margins. Small holes in lower left margin.
Damage to upper right corner outside platemark. £260
A man is packing his rifle at left, while a dog beside
him sniffs at a dead bird wit another dog lying beside.
Two more men are at the right, with one thrashing the
bushes in the background.
After English painter, George Morland (1762/3 - 1804)
renowned for his scenes of English rural life and
picturesque landscapes. Engraved and published by
Italian reproductive stipple engraver, Antonio Suntach
(1744 - 1828).
Part of a series of nine hunting scenes, including some
plates after Ibbetson.
Stock: 33241

