

Hand list 123: Summer Miscellany 2024



Janette Ray Booksellers, 8 Bootham, York YO30 7BL
TEL +44 (0) 1904 623088 & MOBILE + 44 [0] 780 394 1307
EMAIL: books@janetteray.co.uk
WEBSITE www.janetteray.co.uk

Architecture & Design

Arts and Crafts Architecture

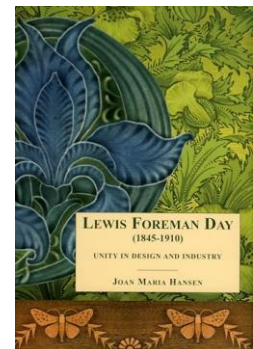
1. ASHBEE, C R., *The Hamptonshire Experiment in Education*

London George Allen & Company, Ltd. 44 & 45 Rathbone Place 1914 [xi], [1] blank 165, [1], [2]pp 'other works by C.R. Ashbee' and blank; original white buckram backed blue boards; spine and upper cover blocked in black; loosely inserted printed paper slip 'With the Author's Compliments.' Good . Important text for understanding Ashbee's attitudes to education. He selects a fictitious location to discuss his ideas. The work outlines what could be done for education in country districts with a unified approach. By using the device of the fictional county of Hamptonshire. Ashbee divides his work into seven chapters on 'The Elementary School,' 'The Secondary School,' 'What is meant by Higher Education,' 'On Certain Aspect of Education in Agriculture,' ' On the Teaching of Art in the Countryside,' 'The Hamptonshire Experiment' and 'Difficulties of Administration and Finance.' It was published at the beginning of World War I, an untimely moment as the work overshadowed by events. It advocates processes to ensure that traditional crafts were kept alive. Along with *Should we Stop Teaching Art?* this book reveals a major preoccupation of Ashbee that is the rural craft tradition. Guild of Handicraft interests. Image of C R Ashbee shown opposite is not in the book. [Ref: 15018] **£180**



2. (DAY) HANSEN Moan Maria Lewis Foreman Day (1845-1910) *Unity in Design and Industry*

Woodbridge Antique Collectors Club 2007 300pp illus with b/w and colour plates. Large 4to. Like new. Fine in dust wrapper. An appraisal of a rather neglected figures in late nineteenth-century design. In evaluating Day's parallel career as an industrial designer and a major writer and critic, the book shows his relationship to other influential design figures of the time and explores his relationships with colleagues including William Morris, Walter Crane, W.A.S. Benson etc. [Ref: 22442] **£35**



FURNITURE BY ARTHUR PENTY AND CHARLES SPOONER

3. ELMDON & CO. *A Catalogue of Furniture Made by Elmdon & Co [...]* *From Designs by Charles Spooner & Arthur J. Penty*

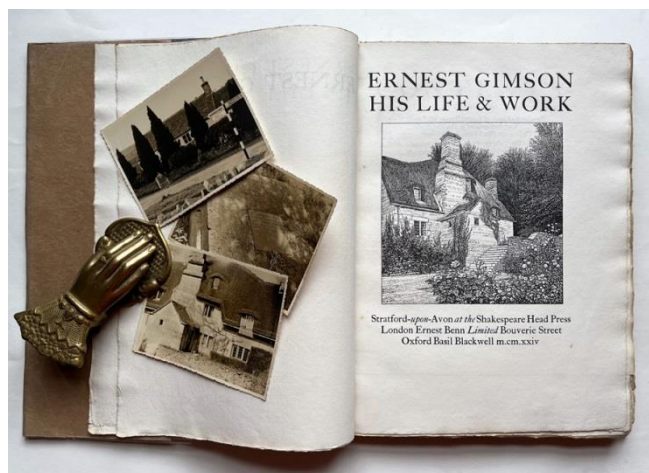
London: Martlet Press nd c1905 xvpp text + 60 b/w plates, mostly photographs with some line ills. Small square 4to in brown paper wrappers with Arts and Crafts lettering. A good copy but with c 4cm of spine chipped away. From the collection of Charles Spooner. Lovely showcase catalogue, issued just after Elmdon took over the Wood Handicraft Society. The introductory essay lays out their design philosophy and explains their use of traditional methods and materials, especially oak, mahogany and walnut. The following catalogue displays some of the company's finest 'moderate priced' furniture, designed by Spooner and Penty, two leading architects/designers/thinkers of the period. Overall, the catalogue is a kind



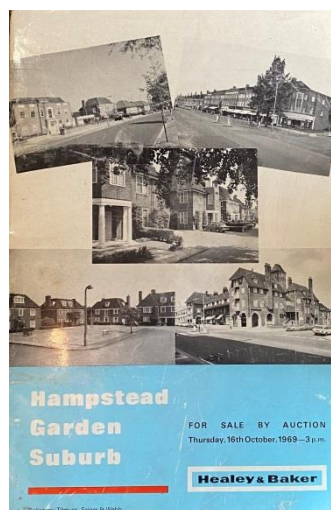
of visual manifesto for the newly formed company, its contents reflecting an ideological as well as aesthetic stance. The last pages show shop front design which both architects engaged with. Rare. *Charles Spooner [1862-1938] was an architect, active socialist and teachers as well as furniture maker. He began his practice in 1891. He also taught at the Guild of Handicraft and Central School of Arts and Crafts. Arthur Joseph Penty [1875-1937] was also an architect, initially from York. He was a writer on Guild Socialism and Distribution. He is generally credited with the formulation of a Christian socialist form of the medieval guild as an alternative basis for economic life.* [Ref: 22888] **£500**

4. (GIMSON ERNEST 1864-1919) LETHABY, W. R. POWELL, Alfred H and GRIGGS, F. L., Ernest Gimson his life and work

Stratford upon Avon Shakespeare Head Press 1924 vii + (1) + 47 + (1) + (v) + 1pp, list of subscribers. 60 collotype plates and 8 text ill. 4to. Original publishers' boards, cloth spine and printed label. [A spare label tipped in to rear. Handmade and lettered dust wrapper which has hand drawn Shakespeare Head illustration on lower wrapper which perfectly complements the book. Drawings by F.L. Griggs and plates which illustrate Gimson's own work including silverwork, cottages etc. Limited edition of 550



copies. This number 276. Biographical notes by W.R. Lethaby, Alfred Powell and F.L. Griggs. The definitive book, beautifully produced as a tribute to Ernest Gimson's productive life. From the library of Henry Harwood Holmes with his name and address on front end paper. Layed in are 4 original photographs - three taken by Holmes in 1936 of Sapperton including Gimson's cottage and grave, and a fourth of Holmes in his workshop making a lute. Notes of verso of this last photographs provides context and this copy of the book gifted to Mr Newman. Two letters relating to the book from Elizabeth Holmes 1987 and response from Anne Carruthers at Cheltenham Art Gallery concerning value of the book. Holmes was a devotee of the craftsmanship that Gimson. Holmes worked from Sheffield [Ref: 22825] **£750**



5. [HAMPSTEAD GARDEN SUBURB] Sale Catalogue

London Healey & Baker 1969 94pp, illustrated with b/w photographs of the suburb, colour diagrams and a large scale fold out plan of the estate slipped into rear of the publication. Royal 8vo. Decorated wrappers. Wrappers a little scuffed else good. In 1969 5300 properties producing £203,135 per annum formed this sale. The document is essentially an inventory of the freehold and long leasehold properties comprising Hampstead Garden Suburb. The suburb was divided, for purposes of the sale, into seven groups. The properties are all listed street by street providing a fascinating document on the estate. As a result of the sale in 1969 the whole of the interest in the Suburb Leaseholds Ltd was sold to Ashdale Land and Property with the absolute Covenant that the lessees would "preserve the present character & amenities of the suburb". The background to the sale was that in 1957 the Co-partnerships Tenants changed their name to Suburb Leasehold Ltd. Various property interests and sales left the Old Trust with substantial funds, more than exceeding

the maximum shareholders entitlement. This led the establishment of two new Trusts and led to the sale of the Suburb Leasehold property. [Ref: 22870] **£250**

6. HAWEIS Mrs. Beautiful Houses; Being a Description of Certain Well-Known Artistic Houses with a preface

London, Sampson Low, Searle & Rivington Ltd 1882 v +115pp illustrated with frontis + initial letters representing some aspect of the houses described. Small 8vo. Decorated paper covered overprinted with red and black letter titles. These are dusty and a little worn. Internally good. The book describes 12 artists' houses including, Sassoon, Leighton, Hazeltine, William Burgess, Morrison, Alma Tadema and The

British Embassy in Rome and Villa Campana. Attractive book which is sought after because of the artist houses represented. [Ref: 21993] £65



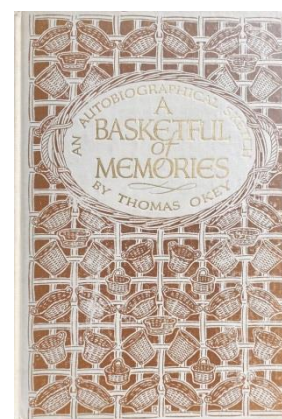
7. HEAL & SON Simple Bedroom Furniture Illustrated by woodcuts from original designs made by Heal and Son

London by the Firm Tottenham Court Road and printed and designed at the Guild Press Birmingham 1889 40pp illustrated with woodcut illustrations. Prices given below each illustration. With an essay by the late Mr Gleeson White on Simplicity in Design. Loose insertion of broadsheet "Extracts from Reviews on Heal & Son's Previous Publications." Decorated wrappers, these slightly worn at edges. Name of William R Brewer on upper wrapper. From the collection of Robin de Beaumont with his bookplate. The publication was produced by The Guild Press, 45 Great Charles Street Birmingham including the woodcuts which were drawn and engraved by the Press. [Ref: 22750] £375

8. OKEY, Thomas. A Basketful of Memories: An autobiographical

sketch

London J M Dent Ltd nd c1930 152pp illustrated. Pages slightly foxed. Decorated boards with basket motifs throughout. Thomas Okey (1852–1935) was an expert on basket weaving and is also well known for his translations of topographical works. This work recalls his role in the arts and crafts movement, his associations with William Morris and Arnold Toynbee amongst others. Fascinating book in lovely binding reflecting his key skill area in its design [Ref: 22108] £45



9. [WEIR] SNELL, Reginald. William Weir & Dartington Hall

Totnes Dartington Hall Trust 1987 80pp +illustrations. Illustrated with 16 b/w plates with [6]pp notes on the images. Small 8vo. Fine in dust wrapper. From the collection of Gavin Stamp with his book ticket pasted onto lower edge of front paste down. Weir was a conservation architect, contemporary with Philip Webb and William Morris. The book describes and discusses his career with the last part of the book detailing the conservation work he did at Dartington Hall for the Elmhurst's where he was restoring the old buildings alongside pioneering new buildings which were being planned or under construction which employed William Lascaze, Oswald Milne and others. [Ref: 20609] £35

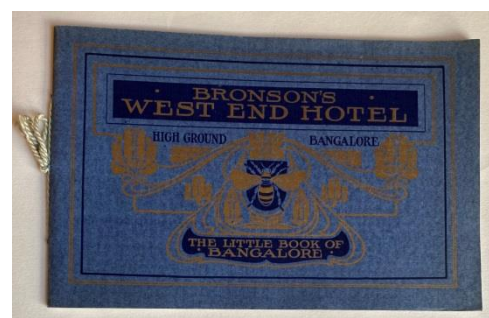
10. [WILLIAM MORRIS] SPARLING H Haliday. The Kelmscott Press and William Morris Master Craftsman

London, Macmillan & Co., Ltd., 1924 Portrait frontispiece of Morris engraved by Emery Walker from a photograph by Sparling, ix + 177pp + [2]pp advertising leaf at the end and 16 plates. 8vo., original linen backed, blue Holland paper covered boards with paper printed spine label. Fine. A very useful study of the operation and history of the Kelmscott Press, founded by Morris in 1891. Henry Halliday Sparling was the son-in-law of William Morris between 1890 and 1898 He had married May Morris but this ended over her involvement with George Bernard Shaw. [Ref: 22853] £240

Monographs on individual buildings

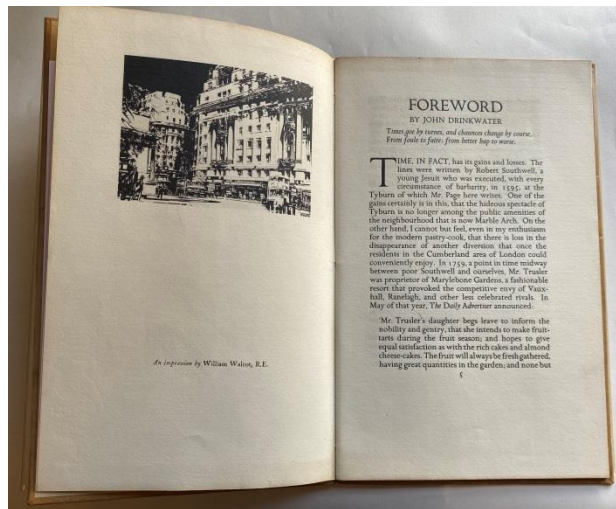
11. BRONSON, I & M. Bronson's West End Hotel Bangalore High Ground Bangalore

Bangalore published by the hotel c 1910 32pp illustrated with sepia photographs. 16mo Decorated wrappers. Ribbon ties. Very good. Illustrations show sights of Bangalore and illustrations of the hotel public rooms. The booklet also describes excursions which can be taken from the hotel. Two-page introductory text on the history of the hotel, established 1888 and extended in 1910. Fascinating colonial publication aimed at the British and Europeans. Mrs. Bronson's 10-room boarding house was the



place to go for the Upper Class Officers of the British Residency. The original building survives as part of the Taj West End hotel complex. [Ref: 22860] £75

12. [BULLRING BIRMINGHAM] GAUNT Nic., Rotunda 21 Stories
 Stockton N Gaunt March 2008 (2008) With CD Rom in rear pocket.
 Black decorated cloth. 300 x 300mm Loosely inserted letter to Michael Manser from Charles Kenniker of Fuji film introducing him to Nic Gaunt as a potential architectural photographer with whom Fuji had worked. The CD has interviews with artists and architects involved with the reconstruction of the Rotunda in Birmingham as part of the much larger Bull Ring Scheme. Upper board and top of spine sunned, else a beautiful copy of this hard to find publication. [Ref: 22031] £160



13. [CUMBERLAND HOTEL LONDON] PAGE, Philip; DRINKWATER, John [foreword by] WALCOT, William Cumberland Hotel
 London Golden Cockerel Press 1933 31pp. 8vo. Ills. Printed on hand-made paper. Full sheepskin binding, with original glassine wrapper and red slipcase. Gilt title on front board. No. 183 of a limited edition [500] from the Golden Cockerel Press. Signed by the two authors and the main illustrator: Philip Page, John Drinkwater, William Walcot. Original glassine wrapper is yellowed and chipped with a small nick to the leather at this point on the spine. Leather covered boards are very good otherwise. Some offset from the sheepskin on the endpapers. Binding a little weak where the sewing is

separating from the boards. Slipcase a little chipped. Internally however, this book is very good indeed. A beautifully produced item published in the early days of Christopher Sandford's era at the Press. The Hotel was designed by F J Wills F.R.I.B.A. and the public rooms designed by Oliver P Bernard. [Ref: 22760] £125

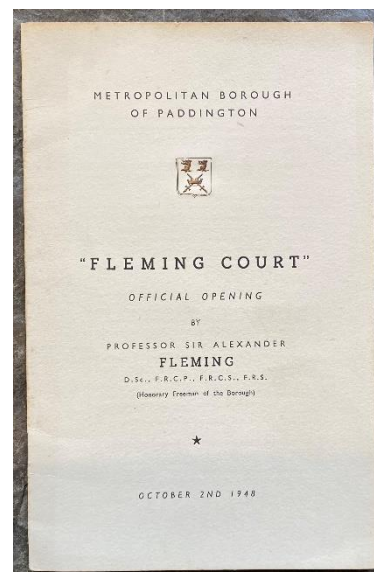
14. [ELECTRICITY SUB STATIONS ETC] EDMUNDSONS ELECTRICITY CORPORATION LIMITED Photograph Album of Constructions and Power Plants
 ? c1923 23 sepia photographs. 13 images, each 205x150mm, are embossed with the photographer MacKenzie at Crieff (Scotland) and depict the construction of a building, including the installation of generators and related equipment. The townscape in two of these images suggest the project documented is at Crieff. There are also 7 larger sepia images, 235x270mm, of equipment including light fittings - two images show these in an exhibition hall with an arts and crafts feel. The other image is a photographed map of Hawick in Scotland showing the mains supply. The larger images seem earlier than 1923 and are possibly turn of the century. All of the images are in very good condition, with only the first being damaged in one corner. They are preserved in a robust embossed cloth album held with leather straps and gold lettering. Edmundson's was established in the late 19th century in Cornwall and its work extended throughout the UK. It was the parent company of The Urban Electric Supply Co. Ltd., which was later formed to supply electricity in the UK. Photographs on request. [Ref: 5535] £360

15. [FLEMING COURT, PADDINGTON] Fleming Court Official Opening by Professor Sir Alexander Fleming October 2nd 1948
 London Metropolitan Borough of Paddington 1948 8pp with photographic illustration of the Project and a portrait of Fleming + a fold out plan 220x140mm Stapled pamphlet with titles on upper wrapper. Illustrated programme to an event marking the opening of the first post war housing scheme in St Mary's Square London W.2. named to honour Sir Alexander Fleming who was then Professor at St Mary's Hospital Paddington thus linking public health with public housing. The scheme was designed under the direction of R A Jensen, Director of Housing by A R Pratt and his architectural staff. It comprised 48 flats which are

described in the booklet and the plan shows the layout of the scheme. with the booklet is an invitation card addressed to Councillor and Mrs E. D. Hunt. The site, now close to the later Westway motorway would have been more closely linked to the hospital of St Mary's where Fleming then worked. Like so many well-designed schemes, many of these properties are now privately owned. [Ref: 22593] £65

16. [HENRIETTA HOUSE HAMERSMITH] McGHEE, Fi. The Site/Photographic Plates Fi McGhee

London Lynton PLC 1990 240 x 280mm. unpaginated fine hardback copy with black boards and black wraparound with punched hole detail, echoed inside the book with front free end and rear papers. Signed by the photographer on the title page. Number 102 of 600 copies. The book was commissioned to record the people who are often the unsung heroes of a construction site, the on-site workforce. The project was the demolition and reconstruction of Henrietta House, a 10-storey housing block in the Hammersmith London originally constructed beside Hammersmith Bridge in 1955-56. High quality black and white portraits of various workers [Ref: 22043] £125

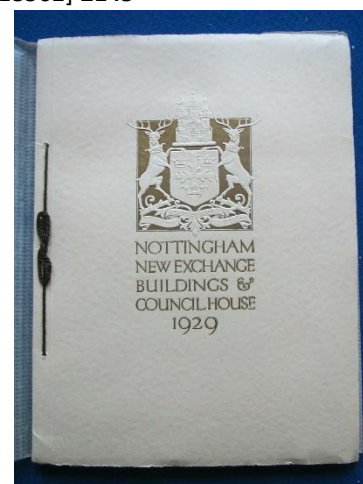


17. [HILTON HOTEL] LEWIS SOLOMON, KAYE AND PARTNERS ARCHITECTS AND TABLER William B (New York) CONSULTANTS London Hilton

London not given 1963 Illustrated portfolio containing 22 items. Printed folder with photomontage of hotel building over a map of London. This a little worn at all edges. Includes 6 bright b/w press photographs of interiors, bars restaurants, rooms etc + 1 exterior image. The images have an information sheet attached to the back excepting for one; Press release for the opening of the London Hilton 1963 Architects Lewis Solomon, Kaye and Partners; 11pp document with b/w illustrations titled 'The Story of the building' which outlines design, planning and construction problems + solutions; 13 staple bound documents with information relating to many different areas of hotel construction, management and finance + some lesser items. Also includes, loosely inserted, a press articles from the Daily Mail, April 19th 1963 which shows panoramic images of London taken from the roof of the London Hilton, with reference to this perspective the associated article raises the question 'are we living in the ugly sixties?'. A fascinating selection of material relating to high-rise construction as well hospitality. The hotel is located in Park Lane, overlooking Hyde Park. When constructed, as a 28-storey Y-shaped tower, it was considered controversial as an intrusion on the park and surrounding buildings. [Ref: 18562] £145

18. (HOWITT Thomas Cecil, Architect) GRANGER Frank, The Council House Nottingham: A Review of the Council House & Exchange Buildings

Nottingham Not noted. 1929 Unpaginated. Short essay + photographs, each 180x140mm sepia with facing captions which document the interior and exterior of the building noting the various contractors involved. Ribbon ties. Decorated Wrappers. Very good. c4 inch tear to the glassine over wrappers on the back. Luxury souvenir to mark opening. The exterior was built of Portland Stone, with Bath stone used for the shopping malls. Statues and friezes were incorporated, representing the activities of the Council, and showing crafts and industries. This impressive building still dominates the central space of Nottingham. Many of the photographs are by Stewart Bale of Liverpool. The quality of Stewart Bale Ltd's photography is high and the firm was regarded as one of the best amongst its contemporaries. All the subject matter is particularly strong on architecture and the main collection of his work is held at Liverpool Maritime Museum and Archives. [Ref: 20617] £68

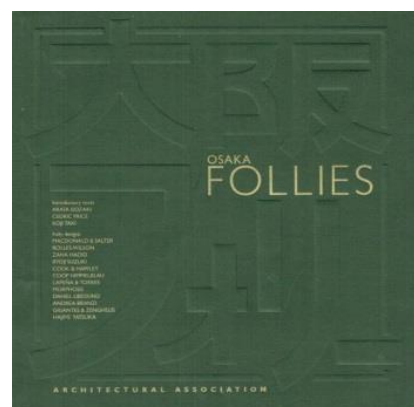


19. ISOZAKI Arata, PRICE. Cedric, and TAKI Koji [Introductory texts by] Osaka Follies

London The Architectural Association 1991 167pp Illustrated in black and white throughout. Square 4to. Green gilt lettered wrappers. Very good indeed. Folly designs by several key architects and practices including Macdonald & Slater, Bolles-Wilson, Zaha Hadid, Daniel Libeskind and others. [Ref: 22736] £100

20. [JONES, Harry] Mr. Harry Jones, Kings Arms, Malmesbury, Wilts.

Malmesbury [Self Published by Harry Jones] 1908 46pp. 6 b/w photographic plates. Brown cloth covers with gilt title on upper cover. Cloth a little marked and torn down spine. Book block has separated from the binding and the first few pages have come loose from the rest of the pages. Small 8vo. 15.2 x 12.4cm. A reproduction of an article printed in the North Wilts Herald in October 1908. With an introduction from innkeeper, Harry Jones. Mr Jones spent 54 of his 55 years in Malmesbury. In 1878 he was the proprietor of the Railway Hotel, moving to the Kings Arms in 1880 on the death of his landlord father. He served a dozen years on the Town Council and was elected mayor in 1885 becoming the first councillor to propose that the Mayor took the Corporation to a place of worship and the first mayor to wear the robes of office. Very scarce item. Appears to be a different binding and print edition to the other copy that is in the Wiltshire Archives. This copy also mentions a price of Sixpence, which the others are without. [Ref: 22846] **£75**

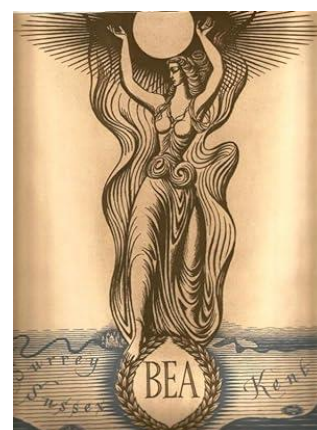


21. (LE CORBUSIER) La Tourette

London Lund Humphries 1963 72pp illustrated with 68 b/w photographs by Bernhard Moosbrugger. Square 4to. Very good in dust wrapper. La Tourette was built for the Dominican order. It was Le Corbusier's last religious building scheme [Ref: 22892] **£35**

22. (KINGSTON POWER STATION) BRITISH ELECTRICITY AUTHORITY Souvenir of the Opening of Kingston Power Station by His Majesty the King accompanied by Her Majesty the Queen on the 27th day of October 1948

British Electricity Authority 1948 65pp, b/w photographs, ports., 3-fold out plans. Tipped in b/w photographic portraits. of King George VI and Queen Elizabeth by Dorothy Wilding and tipped in col. plate of Kingston Power Station from the river by Norman Battershill. other b/w photographs provide good documentary material on the construction. Cream stiff card wrappers with plastic comb binding and cream stiff card dw with gilt lettering. 4to. Very good copy. Glassine wrapper protects book. Includes a general brief history of the Royal Borough of Kingston-upon-Thames along with detailed information about how the power station was built, contractors and sub-contractors who worked on the project and abridged technical data. Also covers the newly-formed British Electricity Authority, its organisation and plans for the future. [Ref: 22889] **£125**

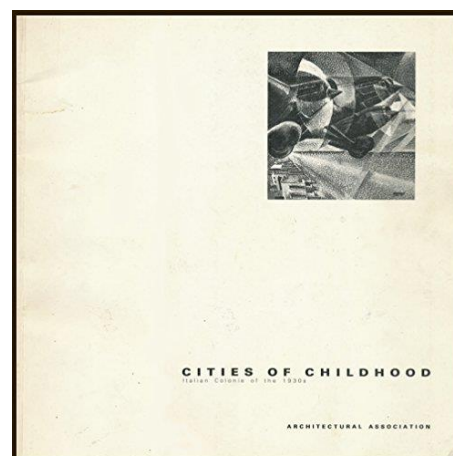


23. MERSEY TUNNEL JOINT COMMITTEE The Mersey Tunnel: The story of an undertaking

Liverpool The Mersey Tunnel Joint Committee 1934 64pp illustrated with b/w plates. Decorated wraps. A little worn on spine, staples rusted else very good. The photographs document the actual construction of the tunnel as well as the finished piece and the text supports the history of the construction. This was one of a number of publications which marked the opening of the Tunnel in July 1934. [Ref: 18268] **£28**

24. [PAOLOZZI] MARTINO Stefano De and WALL Alex (compilers) Cities of Childhood: Italian Colonie of the 1930's

London Architectural Association 1988 88, b/w photographs, diagrams and architectural plans, some with tissue overlays. Square 4to. Paper wrappers. Contribution by Eduardo Paolozzi recalling his childhood experiences of attending one of the summer camps. The book documents these largely abandoned Italian children's sea-side colonies from the fascist era of the 20's and 30's. Built extensively along the eastern and western coast of Italy, many of these structures are arguably masterpieces of modern design but now largely unknown and decaying or largely destroyed and used in their time to promote welfare but also political allegiance. [Ref: 22746] **£145**



25. (WENTWORTH CASTLE) ANON Stainborough & Rockley: their historical associations and rural attractions.

London: John Gray Bell 1853 91pp including list of subscribers +12pp catalogue of books published or sold by John Gray Bell. Small 8vo. Frontis shows the front of Wentworth Castle. Tissue guarded plates of the house and grounds throughout text. Green embossed cloth with gilt decorated spine. A little rubbed at head of spine. Hard to find country house guide book to Wentworth Castle and the surrounding landscape, the centre of a recent restoration scheme, and now managed by the National Trust. Also useful for Rockley, which is a detached landscape, overshadowed by huge 18th century pile that is Wentworth Castle [reworked around an earlier house], its garden buildings and landscape layout. Dedicated to F W R V Wentworth. This copy has an inscription on the front end paper and paste down Alfred Broadbent, Thurgoland near Barnsley Yorkshire 3rd September 1853. He was one of the subscribers listed at the end. [Ref: 22648] **£170**

26. [WOBBURN ABBEY] PARRY, J.D. PARRY History and Description of Woburn and It's Abbey, Etc., Etc.. in the collection of His Grace the Duke of Bedford

London Longman, Rees, Orme, Brown and Green, London; S. Dodd, Woburn; and P. Wright, Brighton 1832

xii pages, 2 leaves, 320 pages frontispiece, 6 double plates. New binding; quarter calf with raised bands and gilt titles on spine and marbled paper boards. New end papers etc. to make this an attractive copy of this comprehensive history of the estate and its family up to the early 19th century. Upper boards a little marked in places else a good copy. Written in two parts: Part 1 includes the history of the town and the ancient abbey; a biography of the Russell family; a sketch of the Gordon family; a description of the town and the vicinity of Woburn Estate. Part 2 addresses Woburn Abbey, its portraits, paintings, sculptures and the gardens and park. Pasted down onto front paste down is Eric Sextons FSA's book plate, opposite Josceline Groves bookplate on free end paper. Loosely inserted plate depicting the Duke of Bedford's Stables. [Ref: 22662] **£185**



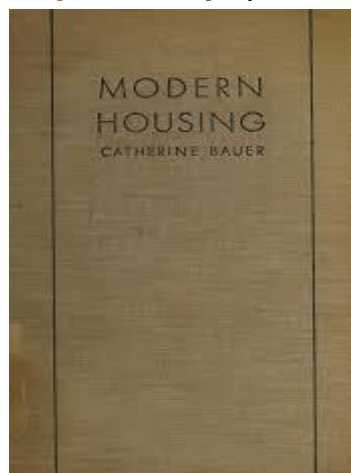
Architects their designs and ideas

27. [ARCHIZOOM] Joe

Pistoia, Italy Poltronova, 1971 Promotional pamphlet for the infamous Joe armchair, designed for the Poltronova furniture company by Italian design trio Paolo Lomazzi, Jonathan De Pas and Donato D'Urbino. One folded sheet printed in full colour. A scarce item for a one-of-a-kind statement chair (pictured right). [Ref: 22804] **£38**



28. [ARCHIZOOM] Superonda, Safari, Mies



Pistoia, Italy Poltronova, 1971 Scarce marketing pamphlet for three Archizoom designs - the Superonda, Safari and Mies chairs - designed for the Poltronova furniture company. 9pp. Stapled pages. Square with colour printed wraps and full page images throughout. Last page provides specifications for each design. [Ref: 22803] **£45**



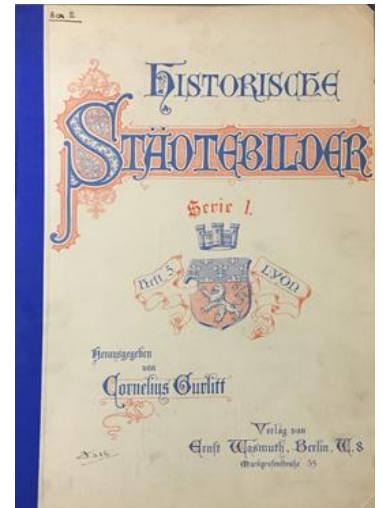
29. BAUER Catherine Modern Housing

Boston and New York Houghton Mifflin and Co 1934 First edition. 331pp + 48pp plates in black and white at the back. 8vo. Open weave cloth with green lettering. Cloth slightly grubby and front and end paste downs foxed else very good. Front paste down has bookplate from the RIBA's Ashpitel Prize, 1938. This award was given to

George G Pace. Seminal work on contemporary inter-war housing and its design with wide ranging examples from Welwyn Garden City, Berlin, Hamburg and other locations in Europe. Includes assessments of the Bauhaus school's work at Dessau etc, the Werkbund exhibition etc. Hard to find in this condition. Bauer was an advocate of planning and social housing and this book was highly influential. Although from the USA she spent time in Europe and knew Man Ray and others in Paris. From the library of George G Pace. [Ref: 22716] £85

30. GURLITT, Cornelius. Historische Städtebilder

Berlin E Wasmuth 1901-1912 12 parts. The complete collection of this superb folios. Loose leaf folders, white decorated lettered boards and gilt lettered spines. Each volume comprises a short illustrated text, c28-31 plates and a bibliography. The numbering of the folios is as follows Bd 1-5 Series I Heft 1-5, Bd 6-10 Series II Heft 1-2 8 (ie 3) 4,5, Bd 11-12 series 3. Heft 1-2. Series I: Heft I Eurfurt, Heft 2 Wurzburg, Heft 3 Stendal, Brandenburg Tangermunde, Heft 4 Ben Zurich, Heft 5 Lyon; Series II: Heft I Ulm, Heft II Cambridge; Heft 8 (3) Breslau, Heft 4, Lüttich, Heft 5, Potsdam; Series III: Heft I Danzig, Heft 2 Brügge. Gurlitt is a key commentator on the Baroque. Apprenticed initially to a carpenter, he went on to study architecture at the Berliner Bauakademie 1869-72 but abandoned this to study art history and in particular the Baroque. He first published Barock und Rococo Ornament Deutschland which began a prolific writing career including these wonderfully illustrated photographs. This set has a single faded purple ancient library stamp on the paste down of each volume and class mark on the upper board else is in exceptionally good condition Hard to find the complete work as one series. A fantastic journey through the baroque cities of Germany and the Low Countries even to the UK as represented by Cambridge. Looks largely unread. [Ref: 15656] £1850



31. (ROYAL ACADEMY OF ARTS) 50 Years Bauhaus + Supplement German Exhibition, Sponsored by the Federal Republic of Germany

London (ROYAL ACADEMY OF ARTS 1968) Pasadena Art Museum California March 16-26th 1970 363pp colour + b/w illustrations. Square 4to heavy card wrappers with illustrated dust wrapper. Dust wrapper slightly rubbed otherwise a very good copy. An attractive and extensive study to accompany the exhibition. It is divided into the following sections, 'Preliminary course and teaching', 'Workshops' 'Architecture + Design', 'Painting, Sculpture and Graphics', 'Life at the Bauhaus' and 'Continuation of teaching'. This structure gives the book an in-depth and concise overview of all aspects of Bauhaus teaching. Sold with the Supplement issues on the Pasadena showing of the exhibition. 31pp illustrated on Bauhaus Graphics. Matching wrappers. [Ref: 22890] £65



32. COATES, Nigel. Arkalbion and six other projects

London The Architectural Association 1984 48pp. Illustrated with b/w and monotone illustrations. Small 4to. Decorated wrappers. Introduction by Brian Hatton. Published in conjunction with an exhibition. Hard to find. [Ref: 22738] £48



33. (GOLDFINGER) DUNNETT James and STAMP Gavin (compiled by) Ernő Goldfinger Works 1

London The Architectural Association 1983 128pp illus with b/w plates. Square 4to. Laminated wraps overprinted with red title. Very good copy. Very useful assessment of his career and contribution within the MARS group. Scarce. [Ref: 22737] £125

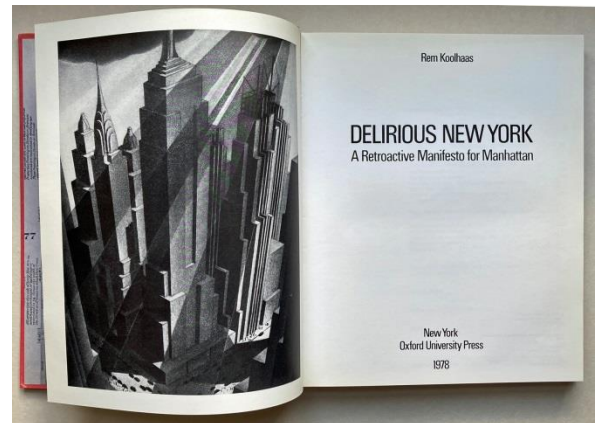
34. (THE INDEPENDENT GROUP) ROBBINS, David. (editor) The Independent Group: Postwar Britain and the Aesthetics of Plenty

Cambridge, MA and London, England The MIT Press 1990 256pp colour + b/w illus. Long 4to yellow cloth with pictorial dust wrapper. A very good copy. Published to accompany the exhibition of the same title. A comprehensive study of the Independent Group, with essays by Theo Crosby, A+ P Smithson and Diane

Kirkpatrick. As well as critical writings from Lawrence Alloway, Reyner Banham, Eduardo Paolozzi, et al. [Ref: 19720] £60

35. KOOLHAAS, Rem. Delirious New York: A Retroactive Manifesto for Manhattan

New York, Oxford University Press, 1978 263pp + numerous b/w and colour photographic plates and ills. Decorated end papers. 4to. Orange boards, dust wrapper. Wrapper has small closed tears on back else very good. Koolhaas documents the extraordinary history of New York, charting the history of Manhattan Island from the first settlers and through periods of heavy development up until the modern period as the scene of much of Western invention and expression. A celebration of the city's rich contribution to architectural, intellectual and artistic discussions, this is a fascinating and comprehensive account of urban and social history and is beautifully illustrated with photographic plates, maps, and architectural and street plans. [Ref: 18985] £440



36. [LIBESKIND] LIBESKIND, Daniel. Theatrum Mundi

London Architectural Association 1985 Mega I.16pp, , 12 colour plates, 270x340mm Theatrum Mundi is a series of 12 abstract colour plates that give visual form to a premonition of the future as a city besieged by an unknown infection. . Minor shop wear on dust jacket. [Ref: 22747] £85

37. KRECIC, Peter Plečnik: The Complete Works

New York Whitney Library of Design, Watson-Guption Publications 1993

256pp, 224 b/w in-text illustrations, 103 b/w and colour half and full page plates. 4to Very good with slightly worn dust wrapper. In this monograph, Peter Krečič presents for the first time a comprehensive study of Jozef Plečnik's (1872-1957) work as an artist and architect, detailing chronologically and with various

photographs and building plans, the importance of Plečnik to the Czech and Slovene modernist movement. Text in English. [Ref: 18569] £55

38. MCKEAN, Charles and JESTICO, Tom (eds) Guide to Modern Buildings in London 1965-75

London, Warehouse Publishing Limited, 1976 109pp with b/w images and maps + [4] b/w map. Tall 8vo. Useful guide to the period featuring lots of brutalist designs. [Ref: 11305] £20

39. PRICE Cedric Works II

London, Architectural Association 1984 116pp with b/w sketches, diagrams and photographs throughout. Square 4to in wraps, Very small chip at head of spine else a very good copy. A scarce collection of writings by Price and others, outlining his philosophy and considering some of his major projects. The architect's frenetic sketches and tabbed pages make this an interesting piece of design as well as a valuable first-hand account of this prominent member of Archigram. Published to accompany an exhibition held at the Architectural Association in 1984. [Ref: 21503] £125



40. RAGGETT, John James, Architect. A Series of Plans of Artizan's Cottages with Quantities for estimating their approximate cost. Intended for the purpose of submitting to Clients as a preliminary before preparing the contract drawings 1900

J J Raggett was an architect and quantity surveyor of 88 Colmore Row Birmingham. Title page, preface + 25 single sided drawings which are plans and elevations of speculative housing. Planform on each sheet in colour. 380 x 560mm. Loose leaf preserved in modern portfolio. Title page and prelims have some scorch

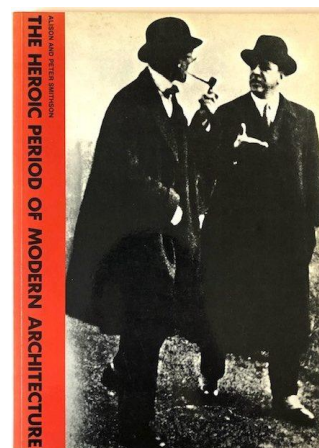
marks around edges but text unaffected. Last leaf similarly darkened with ancient scorch marks. One copy on OCLC at CCA. [Ref: 22876] **£300**

41. [SLATER] 4 + 1 Peter Slater: Building Projects

Black Dog Publishing 200097 + [4]pp illustrated with colour and b/w plates. 4to Wrappers. Features, Osaka Folly, Thai Fish Restaurant, Inami Woodcarving Museum, Kamiichi Mountain Pavilion and Ramshorn Church Yard. Essays by Andrew Higgott, Robert Harbison and Peter Beardsell. Very good copy. [Ref: 22742] **£145**

42. (SMITHSON) Smithson Alison & Peter The Heroic Period of Modern Architecture

London Thames and Hudson 1981 80pp. Illustrated with 8pp colour plates and the rest in black and white. Laminated wrappers 4to. Based on the magazine Architectural Design 1965. Cover design shows Le Corbusier and Mies van de Rohe in conversation. In 1965 a special issue of AD was produced on the influences post 1910 on the modern movement and the Smithsons assembled documents to reflect the architectural dynamism of the period. This is effectively a reprint of the issue of the Journal. [Ref: 20865] **£40**



43. [SMITHSONS] DEN HEUVEL Dirk van and RISSELDADA Max (editors) Alison & Peter Smithson: From the House of the Future to a House for Today

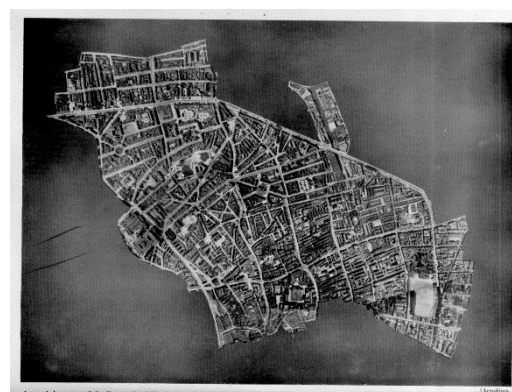
Rotterdam, 010 Publishers 2004 238pp + (2)pp. Long 4to. Decorated wrappers with fold ins. Very good, preserved in adhesive plastic covering. This title examines the evolution of the Smithsons' approach to designs for individual dwellings. Includes texts by the architects. It traces their work from New Brutalism, through the 1960s Pop Art Movement to their later work. [Ref: 18513] **£140**

44. STEINER, Marie. Goetheanische Bühnenkunst. Ein Hinweis auf die Arbeitsgebiete der Sektion für redende und musische Künste am Goetheanum.

Dornach Philosophisch-Anthroposophischer Verlag 1935 52pp illustrated with b/w plates + [3]pp catalogue of Rudolph Steiner's publications. Silver decorated wrappers. With large decorative bookplate of Gavin Stamp on front paste down. Good copy. The focus on this short publication is a description and explanation of the Department of the Performing Arts at the Goetheanum. [Ref: 22067] **£20**

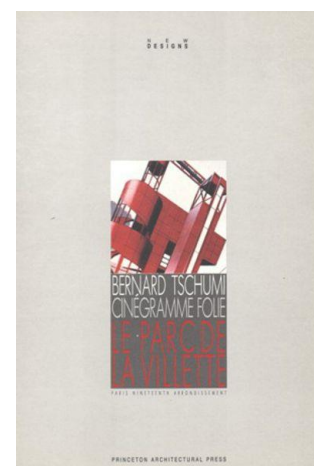
45. TECTON Planned A.R.P.

Architectural Press 1939 138pp illus. with b/w ills and plates. Small 4to. Red lettered cloth, sl. sunned and worn at top of spine and some foxing sporadically found throughout and on book block. A good copy otherwise, of this key text on air raid attacks and methods for countering these. Based on the investigation of structural protection against air raid attack in the Metropolitan Borough of Finsbury. Bookplate on front paste down: "The Final Examination, Qualifying for Candidature as Associate. RIBA. The Ashpitel Prize, 1938 awarded to George Gaze Pace." [Ref: 22717] **£70**



46. [VILLETTE PARC] TSCHUMI, Bernard, cinégramme folie: le Parc de la Villette, Paris nineteenth arrondissement

Princeton University Press 1988 64pp illustrated with photographs, line ills some spread across two pages. Decorated wrappers. 225 x 343mm Scattered foxing on wrappers else internally very good. The Parc de la Villette is the third-largest park in Paris, 55.5 hectares (137 acres) in area, located at the north-eastern edge of the city. Written at a time when the park was being initially established. [Ref: 22891] **£45**



47. [VILLETTE PARC] AURICOSTE Isabelle & TONKA Hubert Parc-Ville Villette Architectures

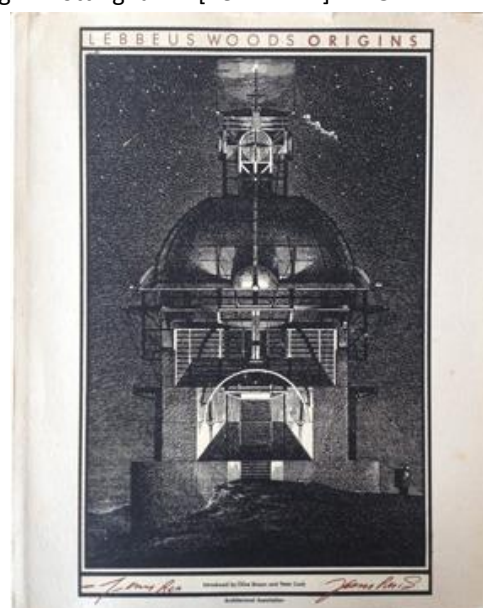
Paris Champ Vallon 1988 No 2 in the Vaisseau de Pierres collection. Preface by Jean Baudrillard. 120pp illustrated with colour and b/w plates and line ills and maps. Decorated wrappers. Slightly worn along spine else good copy. Reviews and considers Bernard Tschumi's major deconstructivism project for the park with fabulous visuals. The park was part of President Mitterand's scheme for regeneration of the partially derelict industrial areas on the north eastern side of Paris. Now a highly popular blend of landscape with the scientific and cultural. Text in French. [Ref: 22907] £60

48. (WILLIAMS) COTTAM David with contributions by ROSENBERG Stephen, NEWBY Frank and CRABB George Sir Owen Williams 1890-1969

Architectural Association Works III, London 1986 176pp illus with b/w plates. Square 4to. Laminated wrappers. Very good copy. Hard to find assessment and review of Owen William's work as an architect and engineer. He is best known for his work at Wembley Stadium, and as the principal engineer for Gravelly Hill Interchange (known popularly as Spaghetti Junction) as well as a number of key modernist buildings, including the Express Building in Manchester and Boots D10 Building in Nottingham. [Ref: 22744] £125

49. [WOODS] BROWN, Olive and COOK, Peter. Lebbeus Woods Origins

London Architectural Association 1985 Mega II. 64pp illustrated with 48 duotones. The late, Lebbeus Woods is best known for his visionary architectural renderings along with his contributions to the look of the films "Alien3" and "Twelve Monkeys". "Mega II / Origins" is the beautifully illustrated catalogue published in conjunction with his 1985 Architectural Association exhibition of original drawings, sketches, and models that includes textual contributions by the architect along with Archigram's Peter Cook, Olive Brown, and Robert Bensen 280x340mm, wrappers with dust wrapper over, this slightly worn else internally very good. Hard to find. [Ref: 22745] £245



50. WOODS, Lebbeus. Radical Reconstruction

Princeton Architectural Press, 1997 168pp, illustrated with colour and black and white illustrations. Long 4to. Laminated boards. no Dust wrapper as issued. Small amount of shelf ware else good.

This volume addresses the relationships between architecture and war, political revolution/reaction, and natural disasters with three particular examples from Sarajevo, Havana and San Francisco. Essays by Aleksandra Wagner and Michael Menser. [Ref: 22751] £165

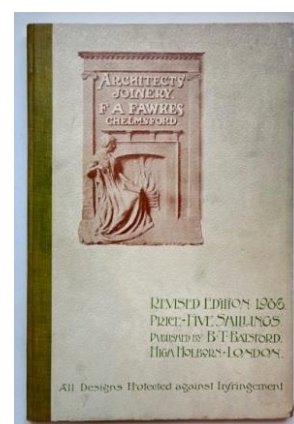
Building crafts and trade catalogues

51. CRITTALL WINDOWS Metal Windows Catalogue 23

Braintree, Essex Crittall Manufacturing Company Ltd 1922 Printed at the Curwen Press. 146pp illustrated with b/w photographs. Graphics in red and black. Small folio. Decorated boards, cloth spine with paper spine label. Boards and spine a little soiled. Prelims also a little dusty but throughout very good. Fabulous trade catalogue by this firm of window manufacturers arguably produced when the firm was at its height in window production. Examples of installations from Europe and America as well as the UK. The catalogue covers a range of building types including the domestic, commercial and industrial sectors. Architects given for the schemes illustrated. Architects include Newton, Lutyens, Belcher and many others. Also there are very good drawings details for the fixings and installation methods and the catalogue also covers their bronze doors etc. [Ref: 22859] £185

52. FAWKES F A (Chelmsford) Architect's Joinery and its Ornamentation

London B. T. Batsford [1896] 1906 2nd edition revised and enlarged. 8pp text + 63pp plates in black and white. Revised and enlarged edition. Small folio. Cloth spine, decorated boards. Cloth backed boards. Corners rubbed else very good. Trade catalogue produced by B T Batsford for this key contemporary joinery firm. Includes full size profiles of details etc. + designs for fireplace, mantels and over



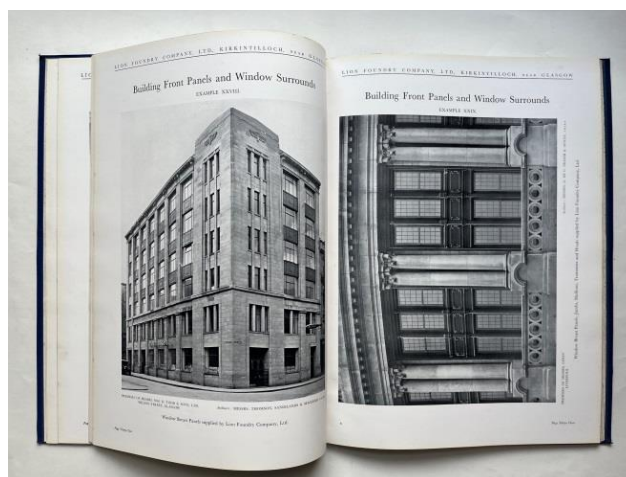
mantels etc. Loosely inserted 8pp small price list from the firm by this date noted in stamp overprinting F A Fawkes, as Crompton and F A Fawkes Ltd. Title page of catalogue is stamped by the firm Morris Shemeld and Wilde of Northampton [Shop Fitters] and dated April 1 1911. [Ref: 22379] **£145**

53. [GLASS] CORSAN Jack (introduction) VILLENEUVE Noel, (edited and designed by) Glass

London The London Sand Blast Decorative Glass Works Ltd nd c 1940 43pp illustrated with tipped in colour and b/w plates. Original white wrappers, with grey/green sugar paper dust wrapper with title on upper wrapper. 250 x 185mm. Text in Spanish. Documents the work of The London Sand Blast Decorative Glass Works Ltd. Features designs from famous theatres, hotels, restaurants, 66 Portland Place for the RIBA and ocean liners including the RMS Caronia. Some light fading to upper half of the front and back cover and spine and a white mark (possibly paint?) on the back cover. The publication has been printed on thick paper which has slightly warped due to the glued-in photographic plates. A very good copy none-the-less. The company was established c1875 and they were manufacturers and processors of constructional glass products, advertising ashtrays, illuminated advertising signs, advertising glass jugs, lettering of chemical bottles, edge-lit glass signs, church windows, door panels etc. This volume features the work of Villeneuve alongside John Hutton, John Buckland Wright for the Caronia and J W Whipp amongst others. Lovely production where the last few tipped in photographs show cutting and acid embossing. List of projects where the glass was installed given at the end. Whole publication has an art deco feel to it. From the library of George G. Pace. [Ref: 22719] **£95**

54. LION FOUNDRY CO. LTD., Illustrated Catalogue of Examples of Ironwork Executed by the Lion Foundry Co., Ltd.

Kirkintilloch near Glasgow no date c 1927 80pp, including frontispiece showing works, preface and full page images of the projects. Folio. Blue gilt lettered cloth. Very good copy. Full page examples of architectural ironwork reproduced from photographs taken from some of the contracts carried out by the firm. Fabulous black and white images of projects with details in captions of locations, architects and details of the element supplied by Lion Foundry such as building panels, window surrounds, verandas, staircases, park conservatories, arcades etc. [Ref: 22878] **£300**



55. SIMMS F W (ed) Public Works of Great Britain: consisting of railways, rails, chairs ... cast iron bridges, iron and gas works ... plan of the Harbour and Port of London, and other important engineering works, with descriptions and specifications, the whole rendered of the utmost utility to the Civil Engineer, to the nobility and gentry. Divisions 1-4. A monument to the useful arts in this country and as examples to the foreign engineer.

London, John Weale 1838 xii + 72 + 32 + 24 + 70pp. 153 full page b/w numbered plates. Large folio. Division I RAILWAYS, Division II CANALS, BRIDGES, RIVER WALLS, AND THE DOCKS AND PORT OF LIVERPOOL. Division III TURNPIKE ROADS, IRON, STEELS, AND GAS WORKS Division IV SURVEY OF THE PORT OF LONDON. Sympathetically rebound. Half calf with gilt lettering, green boards, new end papers. A sturdy copy of this massive study. Illustrated with full page illustrations, maps and diagrams of the projects covered. Scattered foxing throughout. [Ref: 14739] **£650**

56. [STAINED GLASS] (TRADE CATALOGUE) WILLIAM MORRIS & COMPANY Stained Glass Windows

London William Morris & Co. 1953 36 pp. Colour frontis of windows in the Church of the Ascension, Mitcham, Surrey, colour and b/w plates throughout and decorations in the text. 4to. Cloth boards with d/w. Embossed with title and trade mark of the firm on the upper board. D/w sunned and chipped around most edges. Front and rear end papers slightly foxed. Internally though very good. Includes a brief account of the origins, history, uses and types of stained glass with details of the firm's projects. Designed to promote the work of the firm. Nice item with a typed letter to George G. Pace from William Morris & Company slipped in. From the library of George Pace. [Ref: 22714] **£60**

57. [STAINED GLASS TRANSFERS] McCaw, STEVENSON & ORR LTD. Illustrated Catalogue of Glacier Window Decoration: The celebrated substitute for Stained glass

Belfast and London McCaw, Stevenson & Orr Ltd [incorporated in 1889] nd 1895 72pp. Long 4to. Stapled lettered wrappers. Wrappers a little dusty and worn. Book 8 of a series? The firm were applying for a patent at the time of publication and were then sole manufacturers of this method of transferring stained glass designs onto window glass in the UK. Period advertisements for the product were orientated to women at home for enhancing their houses with "artistic substitutes" for stained glass. John Stevenson, in 1871, set up in business in Belfast as a printer; his first partnership was dissolved after a few years, and in April 1876 he joined Alexander McCaw (d. 1878) and James Porter Orr in a partnership. The firm, known as McCaw, Stevenson & Orr, prospered and expanded into larger premises in Linenhall St.; much of the success of the Linenhall Works was based on products developed by Stevenson. He patented several inventions; in 1880, he took out a patent for coloured transparent window decorations with the trademark 'Glacier'. [Ref: 22854] **£425**



58. STEWARD J. H. J. H. Steward's Catalogue of Optical Lanterns.

London, Published by the firm nd. c.1910 Part V of the Illustrated Catalogue series produced by J. H. Steward, in 9 separate parts. 56pp. b/w illustrated catalogue of " optical lanterns, with electric, lime, acetylene or oil light" all available from J.H. Steward's, est. 1852 and optician to the British and Foreign Government and the National Rifle Association. Paper wraps. Small octavo. Stamp for the International Exhibition Brussels 1910 Grand Prix on the upper cover. Very slight signs of ageing else very fine indeed. A rare publication to discover from the much venerated London company which closed in 1975. [Ref: 22856] **£85**

59. TANNER Jr. Henry English Interior Woodwork of the XVI, XVII & XVIII Centuries A Series of the Best and Most Characteristic Examples of Chimney-Pieces, Panelling, Staircases, Doors, Screens &c. Measured and Drawn and with Introductory and Descriptive Text.

London, B.T Batsford 1902 viii + 10pp and 50 b/w litho plates. Folio in original cloth with gilt lettering, top edge gilt. Very good indeed with light wear to spine. Some foxing to endpapers, Stamp of Ellery, Aderson and Rosier on fep. Collection of measured drawings and cross-sections taken from major buildings of post-Reformation England, including: Hardwick Hall, , Broughton Hall, Haddon Hall, Knole House, Hatfield House, Bolsover Castle, Clopton House, Thorpe Hall, Farnham Castle, Hampton Court, Chelsea Hospital, various churches and Oxford and Cambridge Colleges. An impressive attempt to trace the development of specifically English Renaissance design, and to introduce its 'picturesqueness and originality' to a contemporary audience. [Ref: 19231] **£120**

60. [WILLIAM MORRIS] SEWTER, The Stained Glass of William Morris and his Circle two volumes. Yale University Press 1974 Volume 1: 119pp + 665 colour and black and white plates. Volume 2;

Catalogue of window and glass designs. Large 4to. Good set with slightly worn and darkened dust wrappers. Internally very good. Previous owners name on front end papers. A. Charles Sewter thoroughly describes the firm's work from its founding in 1861 to its closing in 1940. Drawing on his first-hand knowledge of almost every Morris window in the United Kingdom and throughout the world, and on account-books and other unpublished sources, he treats in detail the firm's major commissions. He describes the preparation of cartoons and windows and comes to new conclusions about the creative role of Morris and the other artists. Hard to find. [Ref: 22112] **£285**

Gardens and Landscape

Designs and ideas

61. MALLINS Edward English Landscaping and Literature 1660-1840

Oxford University Press 1966 186pp illustrated with 20 b/w plates. Vg in very good dust wrapper. On the influences of literature and art on the formation of the English landscape garden and its design. Skilful analysis of the interplay of philosophy, literature and art in relation to landscape gardening. [Ref: 21459] £48

62. [PIPER John, ILLUSTRATED] SITWELL Sir George An Essay on the Making of Gardens

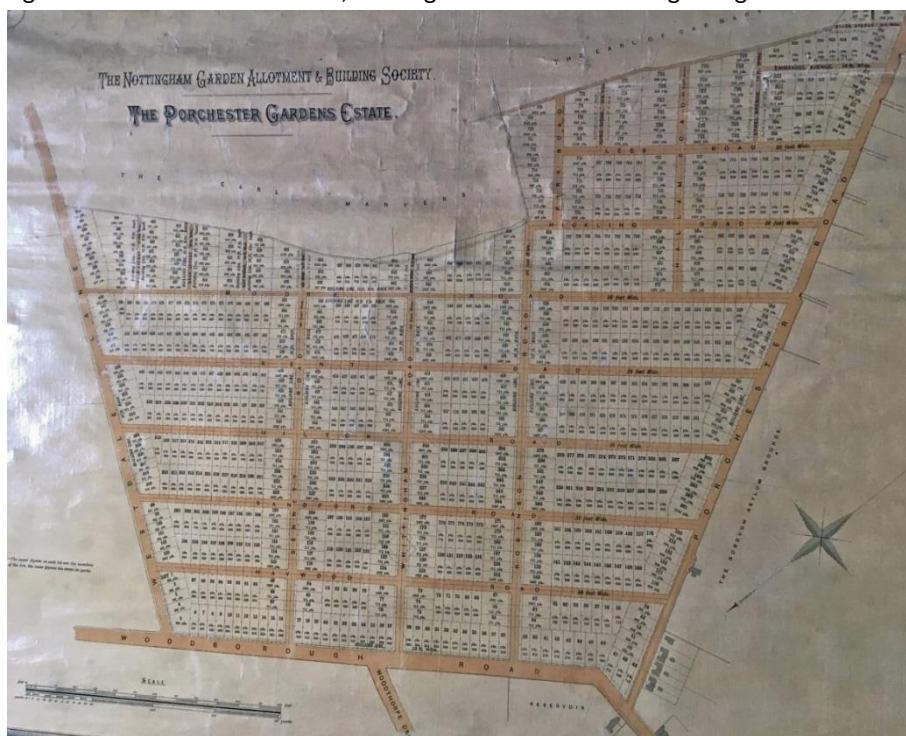
Dropmore Press Edition 1949 Limited edition no 599 decorations by John Piper. Very good copy with very good dust wrapper although this is slightly faded on the spine. Introduction by Osbert Sitwell. Best illustrated edition. Hard to find in this condition. Originally published by J. Murray in 1909 when Sitwell described the design of Italian gardens, this edition illustrated with three single-page and three double-page colour illustrations by John Piper. [Ref: 17500] £260

Monographs on individual gardens and landscapes

63. NOTTINGHAM GARDEN ALLOTMENT & BUILDING SOCIETY The Porchester Gardens Estate 1887

Layout plan showing numbered plots of the Porchester Gardens Estate. 902x610mm landscape format. Mounted on linen, hand coloured printed plan, varnished and mounted between two wood scrolls [one moulded finial missing] . Name of W Arthur Heazell, A regional architect on the plan in bottom corner. Scale . A little dusty especially the linen mounts. In 1887, the Corporation of Nottingham had dispossessed some garden holders of their allotments when the City Asylum (later Mapperley Hospital) was built. Some of these garden holders decided to try to obtain gardens of their own on the land belonging to one Mr Manvers. They persuaded Mr Samuel Robinson of Arnold and Messrs Charles Bennett and David Whittingham to act as guarantors for a loan to buy an initial six acres, to be sub-divided and used to grow food. The plot was purchased by them from the Earl of Carnarvon for £2,400. These six acres were at the corner between Woodborough Road and Porchester Road, Nottingham and were the beginnings of

Porchester Freehold Garden Estate
Subsequently, 130 acres was later purchased, followed by another 122 acres, such was the demand, and eventually there were 832 individual gardens in what became known as the Porchester Freehold Garden Estate. For some thirty years these gardens provided fresh food for the families of workers who owned or rented the plots. After WWI, houses began to spring up on the various plots, so that by 1925 there were 400 properties which would form a substantial part



of the suburban area now known as Mapperley. [Ref: 19462] £280

37. [STOKE PARK] PUGH Peter, Stoke Park The First Thousand Years

Cambridge Icon Books 2008 304pp illustrated with colour, black and white and sepia photographs. Large long 4to. Fine in dust wrapper. Largely considers the golf club and its history but nonetheless a good resource with great images showing the Brownian landscape and later works by Repton. The Viscountess

of Cobham moved to Stoke Park in 1750 and commissioned Brown to make improvements. This was one of Brown's earliest commissions and he would have known the Countess from his days at Stowe. Very useful resource since the guide book to Stoke Park is impossibly difficult to locate. [Ref: 18479] £28

38. (STOWE) CLARK George B (notes) Stowe Gardens in Buckinghamshire: laid out by Mr Bridgeman, delineated in a large plan, and fifteen perspective views. Drawn on the spot by Mons. Rigaud, now reprinted. To which is added an account of the original publication and descriptive notes to each view by George B. Clarke.

London B W Publications Ltd 1987 Large folio (620x450mm). 16 engraved plates after Rigaud, of which 4 are double page, original calf backed spine, gilt lettered. Marbled slip case. Slip case split along one edge and rather worn but the book itself is very good indeed. Limited to 450 copies. This is numbered F. This is the facsimile of the wonderful illustrations of Stowe by Rigaud to which is added descriptive notes by George Clark, a key authority on the Stowe landscape [Ref: 21025] £350

Landscape designers their designs and ideas

39. [REPTON] MALLINS, Edward. [Explanatory volume] The Red Books of Humphry Repton

London Basilisk Press 1976 no 305 Of 515. Folio and oblong 8vo. 4 vols. Limited numbered edition of 515 sets, quarter red morocco gilt over marbled boards, in cloth box, a very good set. A sumptuous facsimile edition, the first published edition thus, of the surviving Red Books; Anthony House, Cornwall; Attingham Park, Shropshire and Sheringham Hall, Norfolk, with an explanatory volume by Edward Mallins containing recent photographs by Eric de Mare. Repton's drawings are meticulously reproduced in collotype and printed on wove paper as close as possible to the original Whatman stock. [Ref: 22155] £1,950

40. [REPTON George] George Repton s Pavilion Notebook: A Catalogue Raisonné.

Aldershot, Scolar Press, 1993 Oblong small quarto, 290 x 210 mm. 186 pages, 179 illustrations. Very good with slightly worn dust wrapper. George Repton (1786-1858) served as assistant to John Nash. Forth son of Humphry Repton. As well as working with Nash. He also assisted his father. For instance, he assisted his father and brother in the plans for the Royal Pavilion at Brighton. [Ref: 21584] £65

Craft of gardens and landscapes

41. DELILLE, Jacques (1738-1813) Les Jardins Poëme

Paris Chez Levrault, Freres, Libraires 1801 New expanded edition. xxxi + 166pp. Illustrated frontispiece. Tree calf binding with black gilt lettered spine label. A little rubbed at corner else a good copy. Culturally important poem by this protégé of Marie-Antoinette in which the author extols the virtue of nature as the inspiration for the garden and landscape. First published in 1782. Lovely copy of a much-translated poem. [Ref: 22581] £175

42. [LAND GIRLS] ANON Meet the Members: A Record of the Timber Corps of the Women's Land Army

Bristol Bennet & Co {Printers} undated. c1942 76pp + 12pp b/w photographs of women training in forestry practices. Very good with dust wrapper. The book includes reprints of articles from the Land Girls Magazine by V E Shaw and some poems. The Women's Timber Corps was a separate branch of the Women's Land Army and was started in 1942. The workers were known as 'Lumber Jills.' [Ref: 22829] £80

Art & Illustration

Works illustrating the work of individual artists and illustrators

43. ALLOWAY, Lawrence and LEWIS, David. This is Tomorrow

London, The Arts Council, printed in 1956 by Lund Humphries and designed by Edward Wright. 1956
Spiral bound. Decorated card covers. Good copy, edges and wrappers a little aged. Limited edition, one of 1300. A lovely piece of design that showcases the talents and ideas of a number of influential modern artists and architect as conceived by architect and art critic, Theo Crosby. Series of appropriate advertisements



at the rear. List of participants in This is Tomorrow, 1956: Group 1: Theo Crosby, William Turnbull, Germano Facetti, Edward Wright. Group 2: Richard Hamilton, John McHale, John Voelcker. Group 3: J.D.H. Catleugh, James Hull, Leslie Thornton. Group 4: Anthony Jackson, Sarah Jackson, Emilio Scanavino. Group 5: John Ernest, Anthony Hill, Denis Williams. Group 6: Eduardo Paolozzi, Alison and Peter Smithson, Nigel Henderson. Group 7: Victor Pasmore, Erno Goldfinger, Helen Phillips. Group 8 : James Stirling, Michael Pine, Richard Matthews. Group 9: Mary Martin, John Weeks, Kenneth Martin. Group 10: Robert Adams, Frank Newby, Peter Carter, Colin St. John Wilson. Group 11: Adrian Heath, John Weeks. Group 12: Lawrence Alloway, Geoffery Holroyd, Tony del Renzio. Hard to find. [Ref: 22893] £750

44. [ATTWELL, Mabel Lucie – cover design] Grand Noah's Ark Bazaar London Prince's Skating Rink W. Knightsbridge, June 5th, 6th & 7th 1905 in aid of "Our Dumb Friends' League"

the original name for Blue Cross – to care for working horses on the streets of London]. The Bazaar was opened by the Duchess of Portland.[First day] The Countess of Halsbury on the second day and Countess of Shaftesbury on the third. Loosely inserted typed letter on headed paper indicating that over £1000 was raised for the cause, [Arthur J. Coke, Secretary of the League to Madame Ronniger] Booklet is unpaginated. Illustrated with Photographs of the participants by Messrs. Thomson, photographers Grosvenor Studios New Bond Street who produced and presented the present publication as a souvenir of the event. [The company took all the portraits of women who feature in the souvenir.] Ribbon tied wrappers. These rather worn. Interesting item listing the stalls and attractions of the Bazaar including Professor Annie Oppenheim character reading from the face and Louis Wain doing lightening sketches. Each stall operated under the sign of a different animal. The details of the event are preceded with a few pages on the League and also acknowledging those involved in fund raising. The photographs feature mainly aristocratic women who supported the cause and ran the event and its stands. Monogram of Robin de Beaumont pasted onto inside of front wrapper. Illustration by Attwell appears to predate her first published books. Not listed in OCLC. [Ref: 22827] £285



45. BOWNESS, Alan. British Pavilion Venice Biennale 1964: Roger Hilton, Gwyther Irwin, Joe Tilson, Bernard Meadows
 London, The British Council, 1964 28pp. With 78 b/w and colour images. Stapled wraps. Upper and verso of cover shows some damage close to the top of the spine (possibly from a sticker or similar paste-down.) Otherwise, very good and internally very clean and bright. [Ref: 22806] £60



46. EDE, Jim. A Way of Life: Kettles Yard

Cambridge. Cambridge University Press. [1984] 1996 Second edition. 254 pages. Illustrated throughout with b&w photographs of Kettle's Yard. 300 x 315mm Long 4to. Very good copy with dust wrapper. A photographic guided tour of Jim Ede's Kettle's Yard. Kettle's Yard was a series of cottages in Cambridge restored by Ede as a place to live and as a place to house his collection of twentieth century art. The residence became internationally renowned and was open to students and visitors from around the world. The art includes pieces by David Jones, Christopher Wood, Miro, Winifred Nicholson, Brancusi, Ben Nicholson, Gaudier-Brzeska, Henry Moore, and Lucie Rie. [Ref: 22906] £65

47. [INSTITUTE OF CONTEMPORARY ART] Capogrossi Exhibition 30 May-22 June 1957]

London ICA, Dover Street 1957 Introduction by Roland Penrose. Unpaginated 8pp including stiff card wrappers. 20 numbers listed. Printed on yellow paper internally, wrap around black and white illustrated wrappers by Capogrossi. Exhibition in coloration with Carlo Cardazzo, Galleria del Naviglio, Milan and Galleria del Cavallino, Venice. Ref: 22904] £40



48. [DELAUNAY] Robert Delaunay : Catalogue of an exhibition of his paintings, reliefs, drawings & lithographs at the Arts Council Gallery, 1958

London Arts Council of Great Britain, 1958 23pp with black and white plates. Very good in decorated paper covers protected by home-made paper dust wrapper. Upper wrapper has lovely colour Dealunay image. [Ref: 22894] **£20**

49. [DORÉ, Gustave] The Doré Gallery: Descriptive Catalogue of the Pictures by M. Gustave Doré on view at 35, New Bond Street, London

Fairless & Beeforth Publishers 1886 By Francis Roubiliac Conder. 72 pp. 12mo., 130 x 105 mm, bound in publisher's pale blue printed wrappers. London: Fairless and Beeforth, 1882. A rare exhibition of catalogue of paintings by Doré exhibited at the Doré Gallery, which opened in 1874 to showcase his work. 58 numbers described. This copy has ancient paper repair to spine and the edges are frayed to the front and back wrappers. OCLC lists 2 copies. [Ref: 22831] **£185**

50. GERALLT JONES R Bardsey; a fortnight's journal translated from the Welsh by the author

Market Drayton, Tern Press 1976 no 138 of 200 signed by Gerallt Jones. Includes prints by Nicholas Parry. Unpaginated. Green decorated wrappers. 240x300mm. Perfect bound. Slightly sunned on spine else good copy. [Ref: 22905] **£30**

51. [GREGORY FELLOWS] READ, Herbert (introduction) The Gregory Fellows University of Leeds

London, The Arts Council, 1964 Unpaginated. 12pp illustrated with b/w plates. This catalogue reviews the work of the first eight Gregory Fellows appointed at Leeds University. They were Reg Butler, Martin Froy, Kenneth Armitage, Terry Frost, Hubert Dalwood, Alan Davie, Trevor Bell and Austin Wright. The Gregory Fellows was the brainchild of Mr. Eric Craven Gregory who established the fellowships in 1949 to promote contemporary art and sculpture. He was a Yorkshire business man and chair of the art publishing company, Percy Lund, Humphries & Co. Hard to find catalogue. Note in red ink on upper wrapper providing a name and address in neat hand. [Ref: 22189] **£60**

A Curiosity

52. (CH) HALL, Charles. The Picture: a nosegay for amateurs, painters, picture-dealers, picture-cleaners, liners, repairers, and all the craft ; being the autobiography of A Holy family, by Raphael, faithfully written from actual dictation of the picture itself

London printed for the author and sold by Hatchard & Son 1837 iv, 78 pp; 8vo. Quarter green morocco, cloth covered boards. Slightly worn at edges. Red spine label, repaired at head of spine. Title page a little foxed else good copy. With signature of Hesketh Hubbard and dated August 1941 on front end paper. A charming book. Written from the perspective of Raphael's 'A Holy Family' and sketching a 'biography' of its movements from artist's studio to its various, subsequent homes. A novel and light-hearted attempt to look what can happen to a painting from its inception to its circulation through various ownership hands, countries, in war time and peace. Scarce. [Ref: 8050] **£380**

53. [HAMILTON, Richard] Hamilton: Paintings Pastels Prints Wolverhampton Art Gallery

Exhibition poster and catalogue for Hamilton's show at Wolverhampton Art Gallery, held between 15 November - 16 December 1975. The show toured from the Serpentine Gallery, London where it ran from 4 October - 2 November 1975. Each exhibition had its own slightly different iteration of the poster's main image. On the reverse, is a catalogue of the 51 works in the show alongside some explanatory text, a list of Hamilton's previous exhibitions and 5 b/w images. Measures W520 x H760mm. Offset lithograph. Good. Creased where originally folded to form the catalogue. Remains of a price sticker approx. half way across the bottom edge of the poster. This Wolverhampton version is scarce. [Ref: 22837] **£140**

54. [KANDINSKY] ROETHEL Hans K. & BENJAMIN, Jean K. Kandinsky Catalogue Raisonné of the Oil Paintings Volume One: 1900-1915 and Volume Two: 1916-1944

London Sotheby Parke 1982 1118 pages with over 1000 illustrations (some in colour). A catalogue raisonné of Kandinsky's oil paintings, comprising over 1000 works; all the descriptive text is in English. Black cloth covered boards with gilt titling. Dust wrappers. Spines slightly sunned else very good. From the collection of Jonathan Silver. [Ref: 22534] **£400**

55. [KANDINSKY] LEVIN, Gail and LORENZ, Marianne Theme & Improvisation: Kandinsky & the American Avant-Garde 1912 - 1950

Boston, Toronto, London Bulfinch Press, Little Brown and Company 1992

236pp. First Edition. Hardback. Dust Jacket. 4to. Original publisher's red cloth, lettered black at the spine. Copiously illustrated in colour and black and white throughout. Produced alongside a touring exhibition Organised by the Dayton Art Institute, curated by co-author Marianne Lorenz. A very good copy. From the collection of Jonathan and Maggie Silver (although un-attributed) [Ref: 22543] **£48**

Signed

56. [LONG] LONG Richard, FULTON, Hamish and SEYMOUR, Anne. Walking in Circles

London Thames and Hudson 1991 To accompany an exhibition at the Hayward Gallery. Long 4to. 263pp Illustrated throughout in black and white and colour. Very good with dust wrapper. Wrapper slightly age toned on spine. Signed by Richard Long on half title. An Interview with Richard Long by Richard Cork. From the collection of Jonathan Silver. [Ref: 22535] **£100**

57. [PAOLOZZI] MARTINO Stefano De and WALL Alex (compilers) Cities of Childhood: Italian Colonie of the 1930's

London Architectural Association 1988 88, b/w photographs, diagrams and architectural plans, some with tissue overlays. Square 4to. Paper wrappers. Contribution by Eduardo Paolozzi recalling his childhood experiences of attending one of the summer camps. The book documents these largely abandoned Italian children's sea-side colonies from the fascist era of the 20's and 30's. Built extensively along the eastern and western coast of Italy, many of these structures are arguably masterpieces of modern design but now largely unknown and decaying or largely destroyed and used in their time to promote welfare but also political allegiance. [Ref: 22746] **£145**

58. ROBERTSON, Bryan (foreword) The New Generation 1965

Whitechapel Gallery London, 1965 88pp. Illustrated with b/w and colour plates. Square small 4to. Vg.



Catalogue to accompany the art exhibition (sponsored by the Peter Stuyvesant Foundation) at London's Whitechapel Gallery during March to April 1965, showing works by David Annesley, Michael Bolus, Phillip King, Roland Piché, Christopher Sanderson, Tim Scott, William Tucker, Isaac Witkin and Derrick Woodham. Text by Ian Dunlop. Cover image, Lord Snowdon. [Ref: 18378] **£45**

59. ROBERTSON, Bryan (foreword) The New Generation 1966

Whitechapel Gallery London, 1966 c106pp. Illus with b/w and colour plates. Square small 4to. Good copy of this useful catalogue produced to accompany the art exhibition (sponsored by the Peter Stuyvesant Foundation) at London's Whitechapel Gallery during June to July 1966, showing works by Roger Barnard, Douglas Binder, Roger Brace, John Carter, Colin Cina, Roger Cook, Mario Dubsy, Eric Gadsby, Knighton Hosking, Justin Knowles, Mark Lancaster, Francis Morland and Victor Newsome. Cover photography by Lord Snowdon. [Ref: 18379] **£45**

60. ROBERTSON, Bryan (foreword) The New Generation 1968 Interim April - May

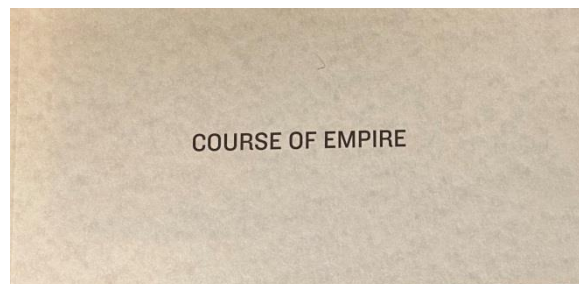
London, Whitechapel Gallery, 1968 Unpaginated. Yellow end papers. With b/w plates. Square small 4to. Cover design by Martin Koretz. Very good. Catalogue to accompany the art exhibition of the same name and sponsored by the Peter Stuyvesant Foundation, at London's Whitechapel Gallery in the Spring of 1968. There was no exhibition in this series in 1967. [Ref: 18380] **£45**

61. [SICKERT] English Echoes: A Series of paintings by Richard Sickert ARA

London The Leicester Galleries May 1931 14pp, [8pp ads] 6 colour plates. Lettered wrappers 130 x 105 mm Very good. [Ref: 22830] **£55**

62. [RUSHA] RUSCHA Ed Course of Empire

Hatje Cantz Publishers 2005 Unpaginated catalogue c48pp illustrated with 11 colour plates. End pages on contrasting green paper give an Italian language summary of the catalogue. Long 8vo. Wrappers. Essays by Joan Didion, Linda Norden, Frances Stark and Donna De Salvo. Ed Ruscha represented the United States at the 51st Venice Biennale with an installation of paintings entitled Course of Empire, on view to the public in the Giardini della Biennale from June 12



through November 6, 2005. This item records the project and exhibition. Course of Empire was both a site- and occasion-specific project inspired by the symmetrical neo-classical design of the United States Pavilion. Fine. [Ref: 18977] **£85**

Illustrated books

63. [ANGUS] Peggy Angus Influence and Inspiration. I

Oldham Incline Press 2005 Published for an exhibition at the St Brides Library 2005 24pp illustrated. Red decorated wrappers. 5 contributors; Diana Hall, Katherine Morris, Philippa Trelfall, Carolyn Trant and Barry Viney. Curated by Graham Moss and Kathy Whalen. [Ref: 22868] **£60**

64. [BAWDEN] LONDON, H. Stanford The Queen's Beasts

London, Newman Neame 1953 56pp. bw and colour illustrations. 4to. Red cloth sl. worn at head and base of spine. In original colourful decorated dust wrapper designed by Bawden. Edge wear to dust wrapper. else very good. Lovely brightly illustrated introduction to Royal heraldry with full page colour illustrations by Edward Bawden and Cecil Keeling, printed to coincide with the coronation of Elizabeth II. [Ref: 22861] **£48**



65. [BAWDEN] FLAUBERT Gustave Salammbô

Cambridge Printed for the members of the Limited Edition Club, Cambridge University Press 1960 Number 830 of 1500 copies signed by Edward Bawden; xi, 316, [2 leaves]. Illustrated with 8 double-page colour plates and colophon tail-piece, line drawn decorated title-page and 39 illustrations.

Ivory buckram, decorated backstrip by Bawden. Introduction by Justin O'Brien. In original slip case which is worn at edges. [Ref: 21288] **£100**

66. [BAWDEN]RUSSELL, James. The Lost Watercolours of Edward Bawden

Sparham The Mainstone Press 2016 Limited to 850 copies. 192 pages, profusely illustrated in colour with occasional b/w photographic plates. Large 4to orange cloth with decorative title to the upper, embossed title on the spine + dark blue slipcase. Introductory essay by James Russell exploring Bawden's life and work in the 1930s. Beautifully produced book exploring this previously neglected aspect of Bawden's career. [Ref: 19524] **£160**

67. [BAWDEN] LUTYENS-HUMFREY, Anne Edward Bawden Designs on life

Essex Museums 198 Concertina fold out form; 28pp illustrated. Title on bund holding the whole publication together. Elusive publication with great illustrations throughout. Great book design. [Ref: 22865] **£95**

68. [DORÉ, Gustave] The Doré Gallery: Descriptive Catalogue of the Pictures by M. Gustave Doré on view at 35, New Bond Street, London

Fairless & Beeforth Publishers 1886 By Francis Roubiliac Conder. 72 pp. 12mo., 130 x 105 mm, bound in publisher's pale blue printed wrappers. London: Fairless and Beeforth, 1882. A rare exhibition of catalogue of paintings by Doré exhibited at the Doré Gallery, which opened in 1874 to showcase his work. 58 numbers described. This copy has ancient paper repair to spine and the edges are frayed to the front and back wrappers. OCLC lists 2 copies. [Ref: 22831] **£185**

69. JOHNSTON, Arnridd. [1895-1972] Animals we use

London Methuen 1948 Johnston was a sculptor, illustrator, poster designer and artist. During the 1930s and 1940s, Johnston wrote and illustrated up to twenty books for children, often on animal subjects but her primary career was as a sculptor. She exhibited at the Whitechapel Art Gallery and with both the London Group and the New English Art Club. Lovely copy. She appears to be rather overlooked. Her poster for London Zoo is still on sale in facsimile at the zoo. [Ref: 22869] **£40**



70. LINES, Marian [KEEPING, Charles (Illustrated by)] Tower Blocks: Poems of the City

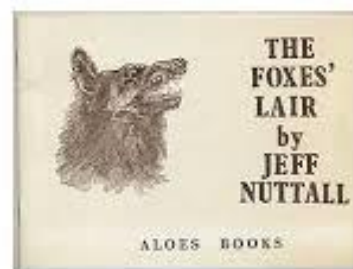
London, Franklin Watts Limited, 1975 47pp. Fabulous colour illustrations by Charles Keeping throughout. Printed paper wraps - slightly faded else good, over burgundy cloth-covered boards with gilt titles. Square octavo. An evocative collection of poems written and illustrated by two creatives who loved the city in which they lived; From "The Railway Line," to "The Old Highway," and "The Welsh Dairy on Our Street"....etc. A very good copy of a wonderful collaboration between writer and artist. [Ref: 22801] **£55**

71. (NASH Paul) BOULTON Janet (editor) Dear Mercia Paul Nash letters to Mercia Oakley 1909-18

Netherton, Wakefield, The Fleece Press Limited edition of 300 copies (of which 250 were for sale). Quarter cloth and patterned paste paper boards, paper spine-label, large 8vo, 106, [1], blank leaf, [1] pp, illustrations, some tipped in, map in pocket at end. Fine copy in slipcase as issued. [Ref: 21359] **£135**

72. NUTTALL, Jeff. The Foxes' Lair

London, England: ISBN: 0856520063 Aloes Books, 1972 Limited First Edition. Stapled Wrappers. Signed by Jeff Nuttall. Jeff Nuttall (1933-2004), was a key figure in counterculture of the UK during the 1960s and involved in many arts & endeavours. Possibly, he is best-known to Beat Generation devotees for his self-published underground literary journal, My Own Mag, featuring many important contributions by William S. Burroughs. Issues of this legendary (& legendarily fragile) Mimeo-



Revolution era classic are now prized among collectors. This item is one of his own works, characteristic of his anarchic style combining text, illustrations often interwoven. One of a limited edition of 25 lettered copies (out of a total edition of 525 copies) signed by Nuttall. The letter "c" appears in heavy font on the envelope in which the item is preserved. On the limitation page as a colophon it is noted that "there is a limited edition, lettered a-z, of 25 copies signed by the author." Below this is the number 4 in printed font, right next to which is Nuttall's signature. An idiosyncratic Jeff Nuttall collectible where C appears on the envelope and 4 on the publication itself which is presumably all part of the game. [Ref: 22885] **£95**

73. [PARKER] ROGERSON, Ian Agnes Miller Parker wood-engraver and illustrator 1895-1980 with recollections of the artist by John Dreyfus

Wakefield The Fleece Press 1990 One of 241 of 300 copies. 92pp 32 wood engravings by Agnes Miller Parker, 3 half-tones of the young artist at her easel, with her fellow students at the Glasgow School of Art and, later in life, holding one of her Siamese cats + further sketches in black and white + one in colour

"The horsefair". 230x280mm Half blue cloth with paper label on spine, Claire Mazairezyk paste paper covered boards. Good in slip case with paper label. Paper label on slip case a little foxed. [Ref: 21428] **£325**

74. [PIPER ILLUSTRATIONS] RICHARDS J.M. The Castles on the Ground

London Architectural Press 1946 1st edition 86pp illustrated with a series of original lithographs by John Piper and in a dust wrapper designed by Piper. Good in sl. frayed but generally very good dw. A wonderful book about the suburbs with great Piper images. [Ref: 22728] **£65**

75. (PIPER) INGRAMS Richard and PIPER John Piper's Places: John Piper in England and Wales

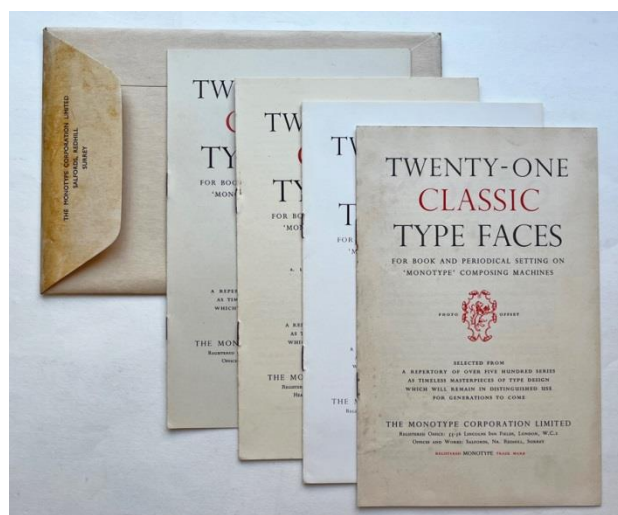
London: Chatto & Windus . The Hogarth Press. 1983. 184 pp. with 144 Fine plates, almost all in colour and some specially made for this book. 4to. Very good copy in good dust wrapper. Superbly produced anthology of places visited and painted by John Piper. [Ref: 22236] **£75**

76. [TERN PRESS] ELLIS, Randolph. The Disasters of War.

Market Drayton, Tern Press 1975 48pp illustrated by Nicholas Parry with etchings and woodcut. Colophon states this is no 1 of 50 [50 hand scrubbed out and noted in manuscript 100] Signed by both Randolph Ellis and Nicholas Parry. The colophon notes that the illustrations are "reminders rather than statements of Goya's etchings." Upper wrapper slightly sunned at top edge as is the spine else very good copy. [Ref: 22901] **£48**

Techniques

77. MONOTYPE: TYPE BEHAVIOUR An envelope containing four editions of the Type-Specimen Pamphlet "Twenty-One Classic Type Faces" published by The Monotype Corporation Limited London to aid the comparison of type behaviour. No date c 1959. Edition A [Letterpress on Antiques Papers], Edition B [Letterpress on Coated Paper] C [Augmented reprint by Photo-Offset] and Edition D [Ditto, by Rotary Photogravure]. Each version of the pamphlet has 8pp printed in red and black. Brown envelope with card title page, this slightly dusty. This initially was attached to the flap of the envelope but the glue has perished. Lovely item. Great for showing the impact in terms of type behaviour dependent on the selection of the paper type and print method. [Ref: 22900] **£45**



78. [MURALS] BALDRY A.L. Modern Mural Decoration

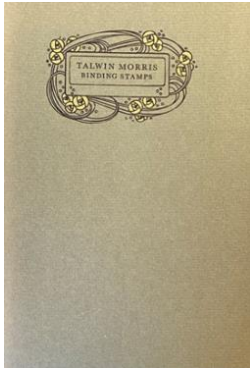
London George Newnes Ltd 1902 xi; 186 pages. Illustrated inc. colour frontispiece by Frank Brangwyn, 3 colour plates and 69 b/w photo images. Gilt decorated blue cloth. Decorated end papers. Interesting for his evaluation of the work of such contemporary decorative artists as Albert Moore, Gerald Moira and Henry Holiday and his selection of illustrations of recently executed mural decoration. Reviews techniques of application in both public and private buildings. [Ref: 19253] **£80**

79. [MURALS] CASSON, Hugh [Introduction] NEWTON, Eric, [Essay] Eyes on the Wall

London Society of Mural Painters 1951 Cover design by Laurence Scarfe. Unpaginated. Long 4to. Scarce Festival of Britain catalogue covering the work of amongst other, Kenneth Rowntree, Edward Bawden, Mary Fedden, Ivon Hitchens, John Piper and Barbara Jones etc. [Ref: 22887] **£35**

80. GOWING, Robert and PENDER Robyn [Edited] All Manner of Murals: The History, Techniques and Conservation of Secular Wall Paintings

London Archetype Publications and English Heritage 2007 218pp illustrated. 4to. Boards as issued with no dust wrapper. Proceedings of a symposium on secular wall painting, conservation methods through case studies etc. [Ref: 22544] **£35**



81. TALWIN MORRIS] Binding Stamps: A small selection of binding stamps designed by Talwin Morris

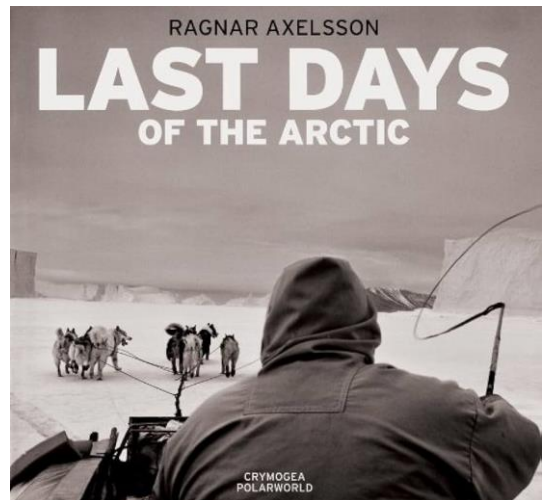
Foulis Press Archive Press Glasgow School of Art 1973 First edition no 36 of 50 copies designed by Gordon Huntly from material by James Murray 14pp printed on 14 leaves French folded. Mounted frontis of gold thistle design blocked onto cream buckram. Fine in original wrappers with Morris design in back and green. Loosely inserted letter from John Tomlinson and Christmas card blank from the Foulis Press. Fine copy. [Ref: 22910] **£125**

Photography

Photographer's works

82. AXELSSON Ragnar (Introduction by Mark Nuttall) Last Days of the Arctic

Crymogea, Poland, 2010 272pp illustrated with colour and b/w plates. Long 4to. Very good in a good dust wrapper. Lovely copy of this wonderful book which documents the traditions of the Arctic including the Inuit's way of life is transforming. Ragnar Axelsson is one of Iceland's best-known photojournalists. For over 15 years, he documented people in the North Atlantic. [Ref: 16539] **£120**



83. [BAILEY, David] HARRISON, Martin David Bailey / Archive One 1957 - 1969

London Thames & Hudson 1999 276pp. With 313 Illustrations, 257 in duotone, 56 in colour. Publisher's black cloth, silver lettered to the spine and with the publisher's matching logo to the upper board. Very slight water mark on upper edge of verso of dust jacket else a very good copy of this comprehensive biographical catalogue of Bailey's life and work between 1957 and 1969. [Ref: 22492] **£65**

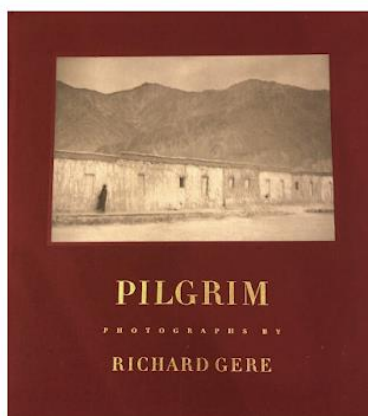
84. BRANDT, Bill Shadow of Light A collection of photographs from 1931 to the present with an introduction by Cyril Connolly and notes by Marjorie Becket

New York A Studio Book. The Viking Press 1966 First American edition published in parallel with the British first edition published by Thames and Hudson. 12pp + 128pp photographs mostly in black and white. Captions to the photographs listed at the back of the book. 4to. Very good in dust wrapper which has a tiny repair on the fold into the rear flap of the dust wrapper and small chip at head of spine and upper corner. Fabulous anthology of Brandt images. Brandt started his career in photography as a pupil of Man Ray in 1929 and moved to London as a free-lance photographer in 1931 to become a

BILL BRANDT shadow of light Introduction by Cyril Connolly



leading photographer of the British scene adopting a photo method employing deep contrasts between shadows and light to produce his distinctive images. A lovely copy of this book which contains a carefully curated selection of Brandt's photographs. [Ref: 22693] **£220**



Signed

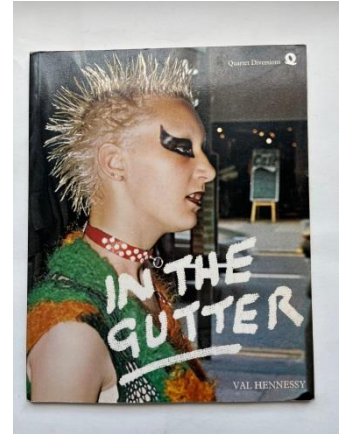
85. GERE, Richard. Pilgrim

New York Bulfinch Press 1999 143pp. Photography by Gere. Text by Gere and the Dalai Lama. Poem by Patti Smith. 4to. Red cloth with

paste down on upper board No dust jacket as issued. Signed on the title page by Gere. Very good copy. Actor Richard Gere has been fascinated by the medium since he was young and sold his own collection at Christies in 2022 but this title is his own photographs. [Ref: 22753] **£125**

86. HENNESEY Val In The Gutter

London Quartet Books 1978 95pp b/w + colour illustrations. Small 4to. Perfect binding, illustrated wrappers. Very small chip to the head of the spine otherwise an almost fine copy. Photographic study with an interesting point of reference. The book was conceived after the publishers were researching imagery for a book on world religions. The adornments of different ceremonial dress reminded them of portraits of contemporary punks. The book contains images of punks juxtaposed with images of people wearing traditional dress. Accompanying text written by Val Hennessey. Excellent piece of fashion research material. Uncommon. [Ref: 18238] **£265**



87. KONTTINEN, Sirkka-Lisa. Byker Revisited

Northumbria Press; First Edition 2009 192pp illustrated. Long 4to. Very good with slightly worn dust wrapper. A portrait in complexity of life in Ralph Erskine's Byker Wall and its setting following the initial honeymoon period. [Ref: 22096] **£32**

Signed

88. McCURRY Steve Monsoon

London Thames & Hudson 2002 Unpaginated, with 84 colour ills. Long 4to. In decorated, laminated firm card covers. Fine. Title page signed by the author, "Dublin 2011". Dramatic collection of photographs recording the monsoon season in India and the tropics of the eastern hemisphere, as part of a two-year commission by National Geographic. Introductory chapters include photojournalist McCurry's personal account of the challenging project, 'The Monsoon Paradox', Between the desert and forest: the Sahel', and 'The Meteorology of the Monsoon'. [Ref: 16550] **£125**



89. MILLER Lee (Photographs) CARTER Ernestine (Editor) Grim Glory:

Pictures of Britain under Fire Preface by Edward R. Murrow. Photographs by Lee Miller and others.

London Lund Humphries-Scribner's no date. Small 4to. Flimsy wrappers. 109 photographic images in b/w of wartime Britain. Hard to find. [Ref: 22667] **£75**



90. RAY JONES, Tony [1941-1972] A Day Off

[London Thames and Hudson 1974] Boston, New York Graphic Society 1974

First American edition. 14pp + 120pp b/w photographs. 4to. Wrappers. Slightly yellowed else very good copy. Documentation of the quirky nature of English Society . The images show the influence of Cartier Bresson and Benjamin

Stone amongst others. The book documents people living ordinary lives but on high days and holidays. The USA edition was published in parallel with the British first edition. [Ref: 22694] **£120**



Signed

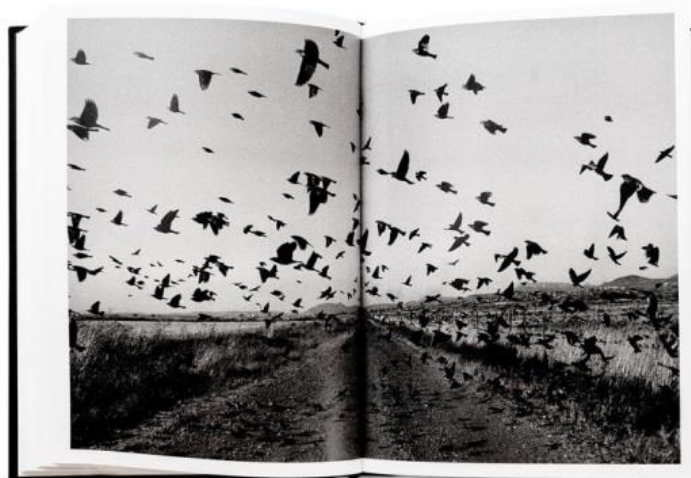
91. STEELE-PERKINS Chris Fuji: Images of Contemporary Japan

New York, Umbrage Editions 2001 136pp with 105 full page colour photographs. Square 4to in cloth boards with lovely decorated cloth d/w. New title signed by author. Steele-Perkins' dazzling and idiosyncratic photographs of Japan celebrate the extremes of beauty,

the hand print of techno-culture, and the irony of the documentary. Based around Mount Fuji these images reflect on Hokusai's images on the same theme. [Ref: 19664] **£125**

92. TOWELL, Larry. The Mennonites

London Phaidon 2000 19 black&white photographs. Text and concept by Larry Towell; design by Atelier Works. Fine in dust wrapper and in black lettered cloth Phaidon slipcase. Magnum photographer Larry Towell about 10 years photographing Mennonite communities in rural Ontario and Mexico. This is a fascinating documentary record of their ways of life. [Ref: 16566] **£145**



Collections of images

93. HAMBOURG, Maria Morris & APRAXINE, Pierre. The Waking Dream Photographs First Century

New York Abrams/The Metropolitan Museum of Art 1993 The Gilman Paper Company Collection. 408pp, 275 illustrations with 196 plates and 79 duotones. Most images printed single or double page with one gatefold. 4to. Very good with slightly worn dust wrapper. Includes historical and critical essays with end section of notes on the individual photographs. [Ref: 22903] **£20**

94. STODDART Tom (photographs) GELDOF Bob (author) with LEROY Jean-Francois, iWitness

London Trolley Books 2004 356pp illustrated with b/w plates. Cloth spine, boards as issued. Fine. Beautifully constructed book which documents the humanitarian crises the result of the way we conduct our lives. Telling photographs throughout by this key photo journalist. Stoddart's varied career has taken him to international events as the war in Lebanon, the fall of the Berlin Wall, the election of President Nelson Mandela, the bloody siege of Sarajevo and the wars against Saddam Hussein in Iraq. Author dedication in silver pen, signed by the author, on the front-end paper. [Ref: 16589] **£65**



Ordering:

1. Ordering: Orders may be placed by phone, e-mail or letter. 24 hour answering service
2. Payment: On receipt of books or pro forma invoice if sent. Maestro, Visa, MasterCard and American Express and PayPal accepted.
3. Overseas customers may pay by Sterling draft or by direct transfer to our bank account.
4. Dispatch & postal charges: At cost. UK parcels sent by Parcelforce 48 hour service or Royal Mail unless otherwise requested. Charges rarely exceed £10.45 for any service. Overseas parcels sent airmail unless otherwise requested.
5. Care has been taken to describe the books accurately. All books are in good condition unless otherwise stated. Books can be returned if found to be unsatisfactory or defective. Notice should be given within 7 days.
- 6 Additional images of any item on the list can be sent on request.

If in York please visit our shop. We are open Wednesdays-Fridays 10.00am – 5.00pm and most other times by appointment.